



SAI ARCHITECTS

Apartment complex in Phuket, Thailand

1	Content	27	Section 1
2	Context plan	28	Section 2
3	Context	29	Section 3
4	Masterplan	30	Building 1. Facade 1
5	Traffic pattern	31	Building 1. Facade 2
6	Public green area	32	Building 1. Facade 3
7	Pedestrian traffic pattern	33	Building 1. Facade 4
8	Sun's map	34	Building 2. Facade 1
9	Explication of apartments	35	Building 2. Facade 2
10	Building 1, parking	36	Building 2. Facade 3
11	Building 1, 1st floor	37	Building 2. Facade 4
12	Building 1, 2nd floor	38	3D view 1
13	Building 1, 3rd floor	39	3D view 2
14	Building 1, 4th floor	40	3D view 3
15	Building 1, 5th floor	41	3D view 4
16	Building 1, 6th floor	42	Visualization
17	Building 1, 7th floor	43	Visualization
18	Building 2, 1st floor	44	Visualization
19	Building 2, 2nd floor	45	Visualization
20	Building 2, 3rd floor	46	Visualization
21	Building 2, 4th floor	47	Visualization
22	Building 2, 5th floor	48	Visualization
23	Building 2, 6th floor	49	Visualization
24	Building 2, 7th floor	50	Visualization
25	Building 2, 8th floor	51	Visualization
26	Building 2, rooftop	52	Visualization







Masterplan



EXPLICATION:

- ① - Section1 (7 floors and underground parking)
- ② - Section 2 (8 floors)
- ③ - Outdoor pool
- ④ - Recreational areas

CONVENTIONAL SYMBOLS:

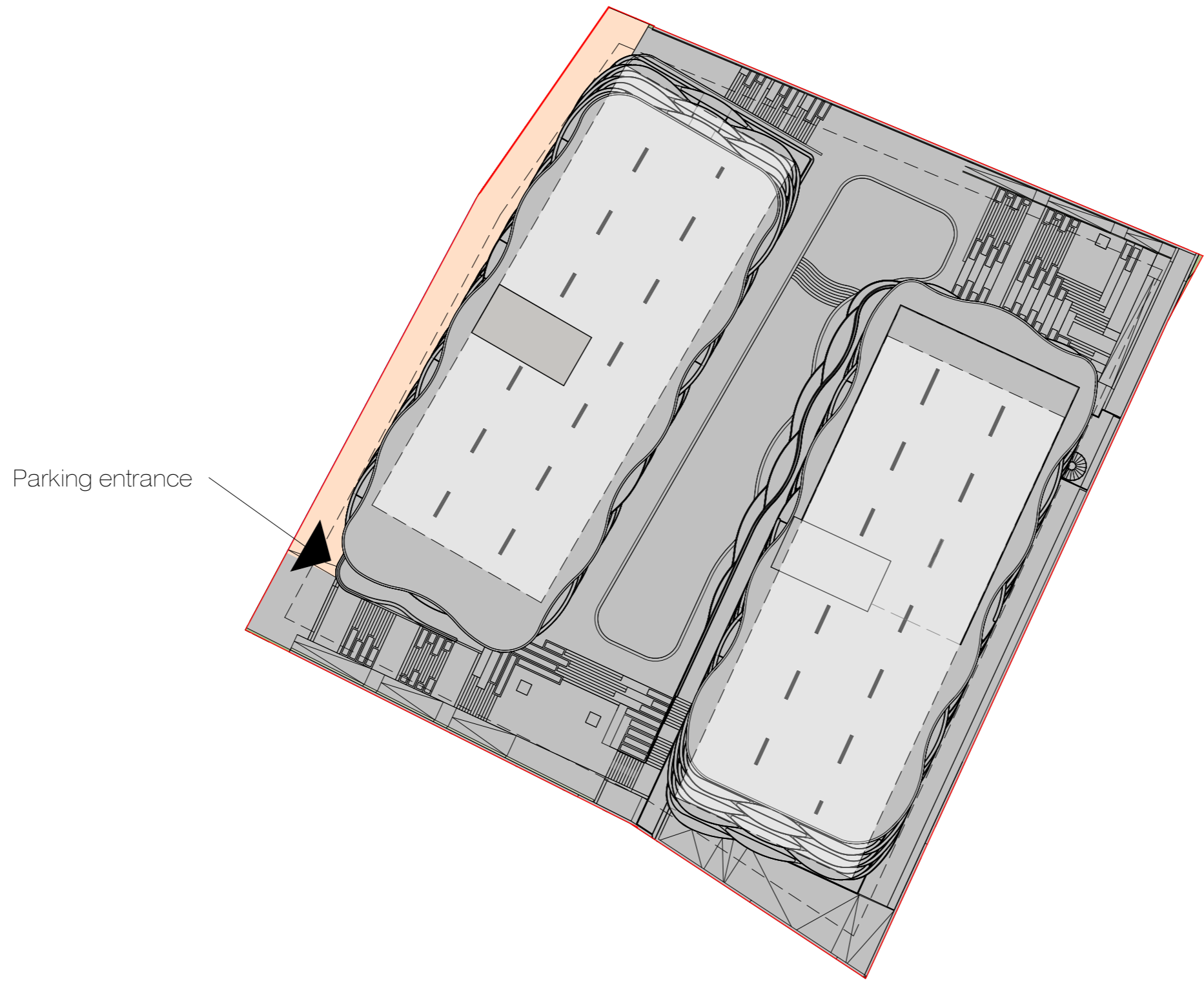
- - site border
- - - - - building site border
- 1st floor contour
- landscaping
- areas and passageways
- outdoor pool

TECHNICAL AND ECONOMIC PARAMETERS:

Total land plot area (3 Rai 1 Ngan 44 Wah2)	- 5376.00 m ²	Underground parking area	- 2127.94 m ²
Construction site area	- 4527.26 m ²	Number of parking slots:	
Building area	- 2088.00 m ²	- cars	- 42 pcs.
Area of landscaping of the territory, incl.:		- motorcycles	- 50 pcs.
- greenery area	- 394,05 m ²	Number of apartments	- 227 pcs.
- paved area	- 2109.38 m ²	Total commercial area	- 2009.04 m ²
Additional facilities (swimming pool)	- 437.15 m ²	Total area of apartments and balconies	- 13668.67 m ²



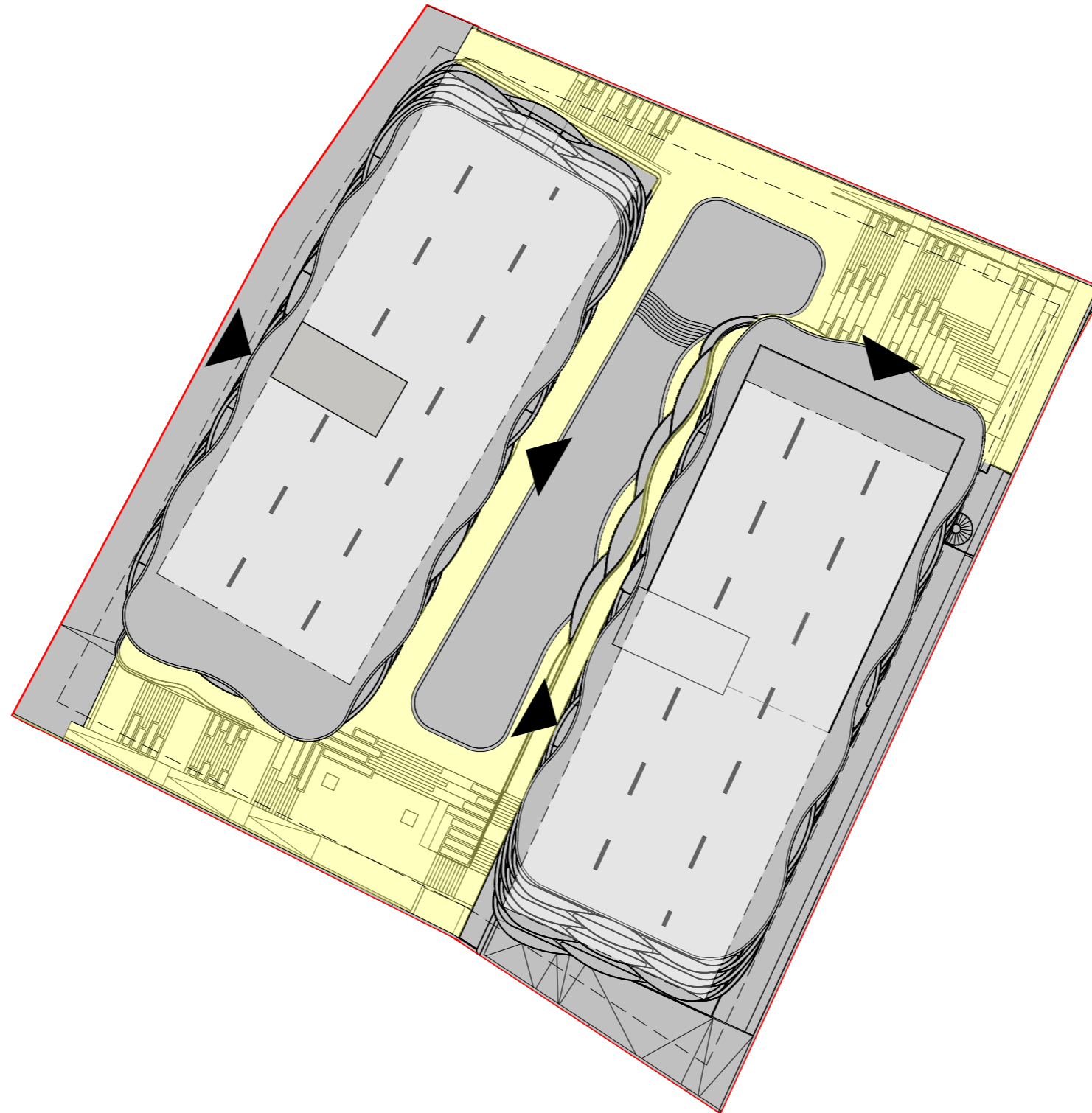
Traffic pattern



Parking entrance

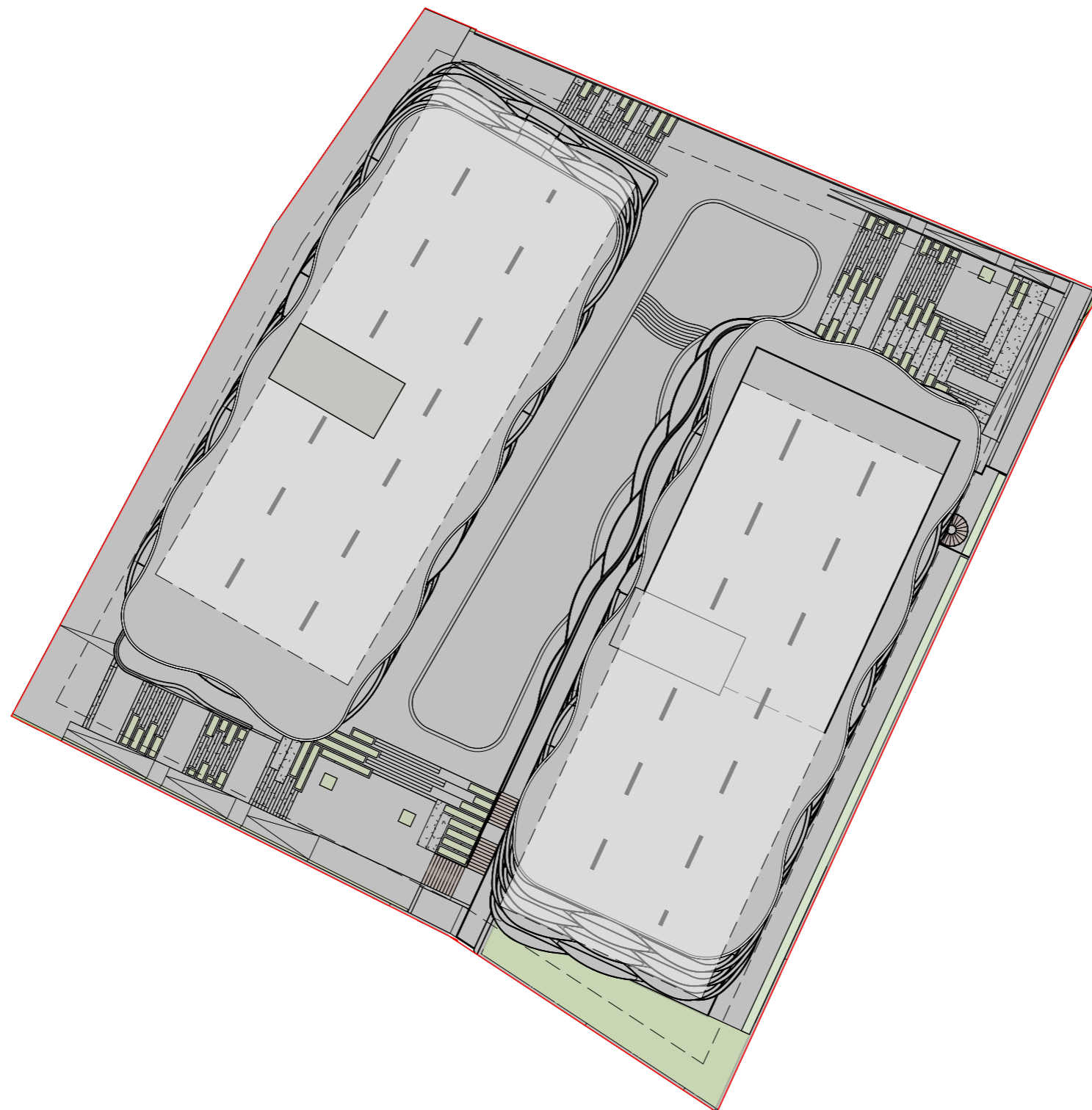


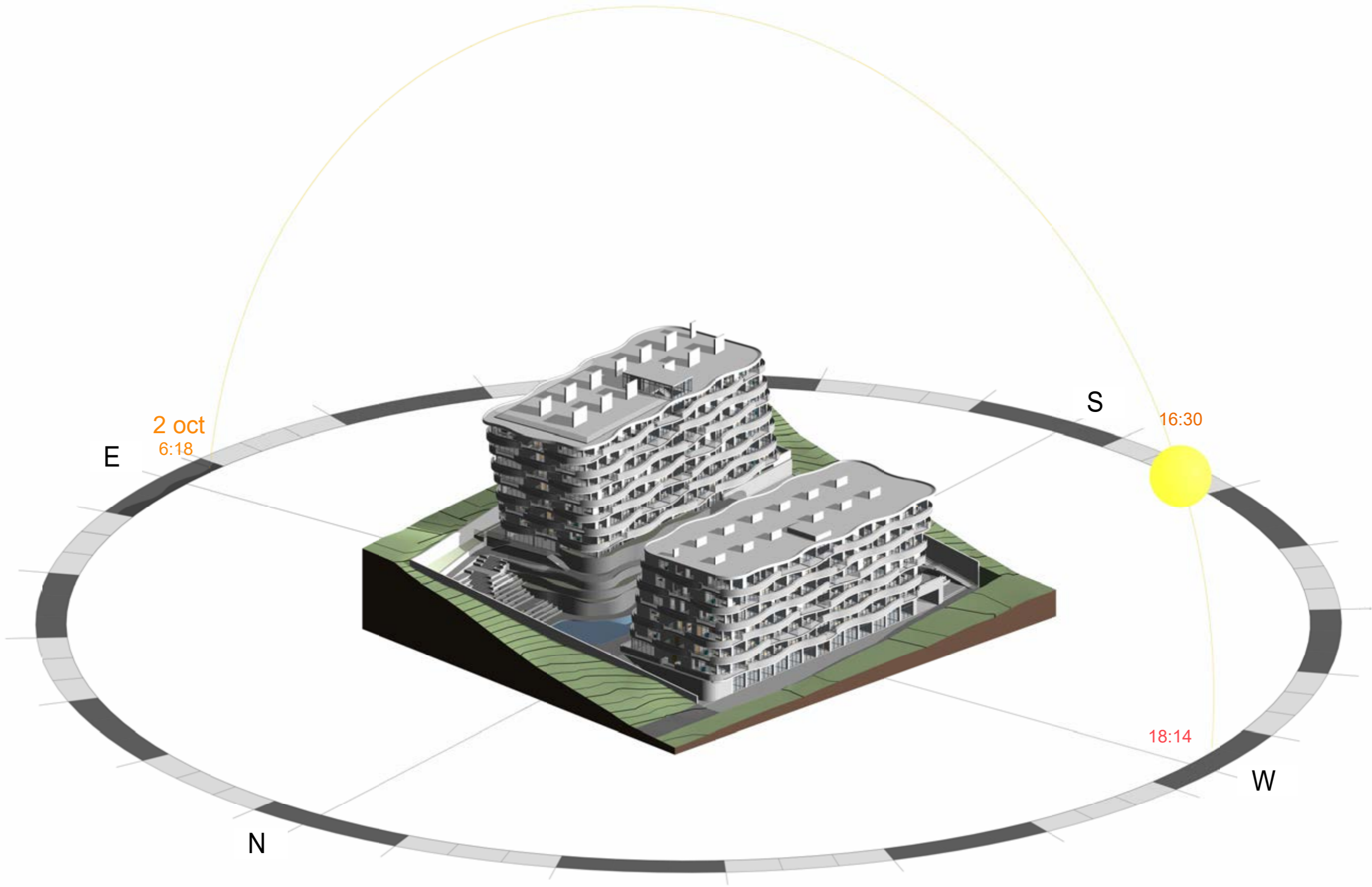
Pedestrian traffic pattern





Public green area





EXPLICATION OF APARTMENTS:

Studios:

Type 1a - 134 pcs.
Type 1a_1 - 3 pcs.
Type 1c - 1 pcs.

1-room:

Type 2a - 2 pcs.
Type 2b - 1 pcs.
Type 2c_1 - 27 pcs.
Type 2c_2 - 22 pcs.
Type 2d - 2 pcs.

2-room:

Type 3a - 1 pcs.
Type 3b - 1 pcs.
Type 3c_1 - 5 pcs.
Type 3c_2 - 10 pcs.
Type 3d - 1 pcs.
Type 3e - 3 pcs.
Type 3f_1 - 2 pcs.
Type 3f_2 - 1 pcs.
Type 3f_3 - 1 pcs.
Type 3g_1 - 1 pcs.
Type 3g_2 - 1 pcs.
Type 3h_1 - 1 pcs.

3-room:

Type 4a - 1 pcs.
Type 4b - 1 pcs.
Type 4c - 1 pcs.
Type 4d - 1 pcs.
Type 4d_1 - 1 pcs.
Type 4e - 1 pcs.
Type 4f - 1 pcs.

TOTAL OF APARTMENTS:

Studios - 138 pcs.
1-room - 54 pcs.
2-room - 28 pcs.
3-room - 7 pcs.

Total - 227 pcs.

BUILDING 1:

Total apartment area: 4740,99 m²
Total balconies area: 1522,95 m²
Total apartment and balconies area: 6263,94 m²

BUILDING 2:

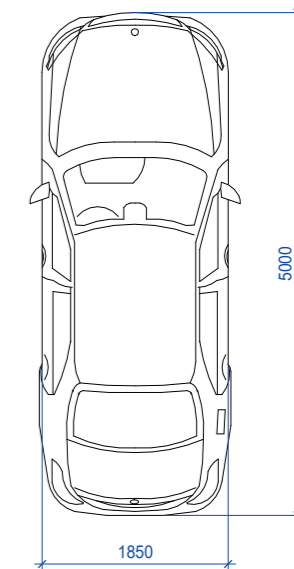
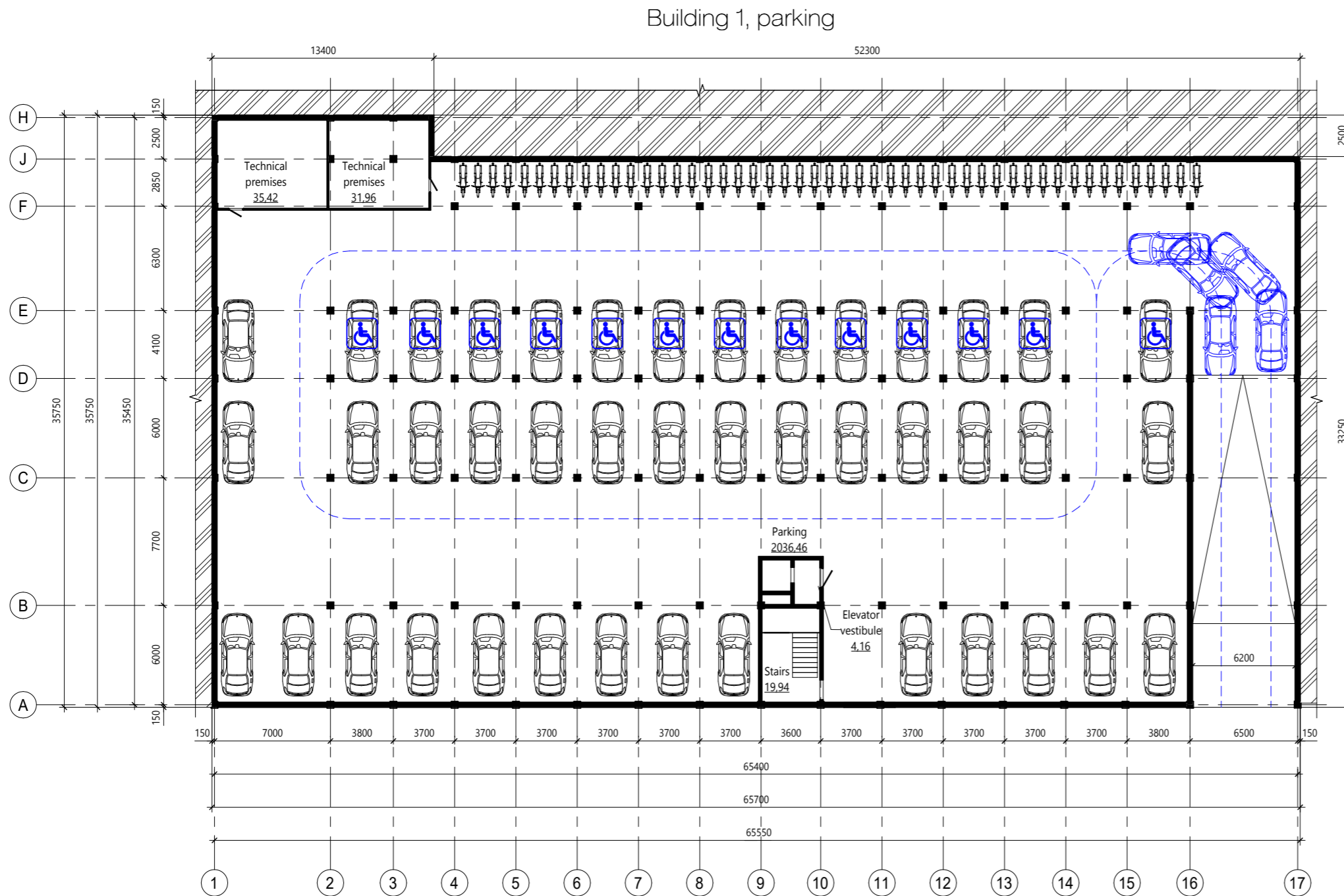
Total apartment area: 5652,08 m²
Total balconies area: 1752,65 m²
Total apartment and balconies area: 7404,73 m²

TOTAL:

Total apartment area: 10393,07 m²
Total balconies area: 3275,6 m²
Total apartment and balconies area: 13668,67 m²

The areas of the apartments are indicated without taking into account the interior walls of the apartments.

Building 1, parking

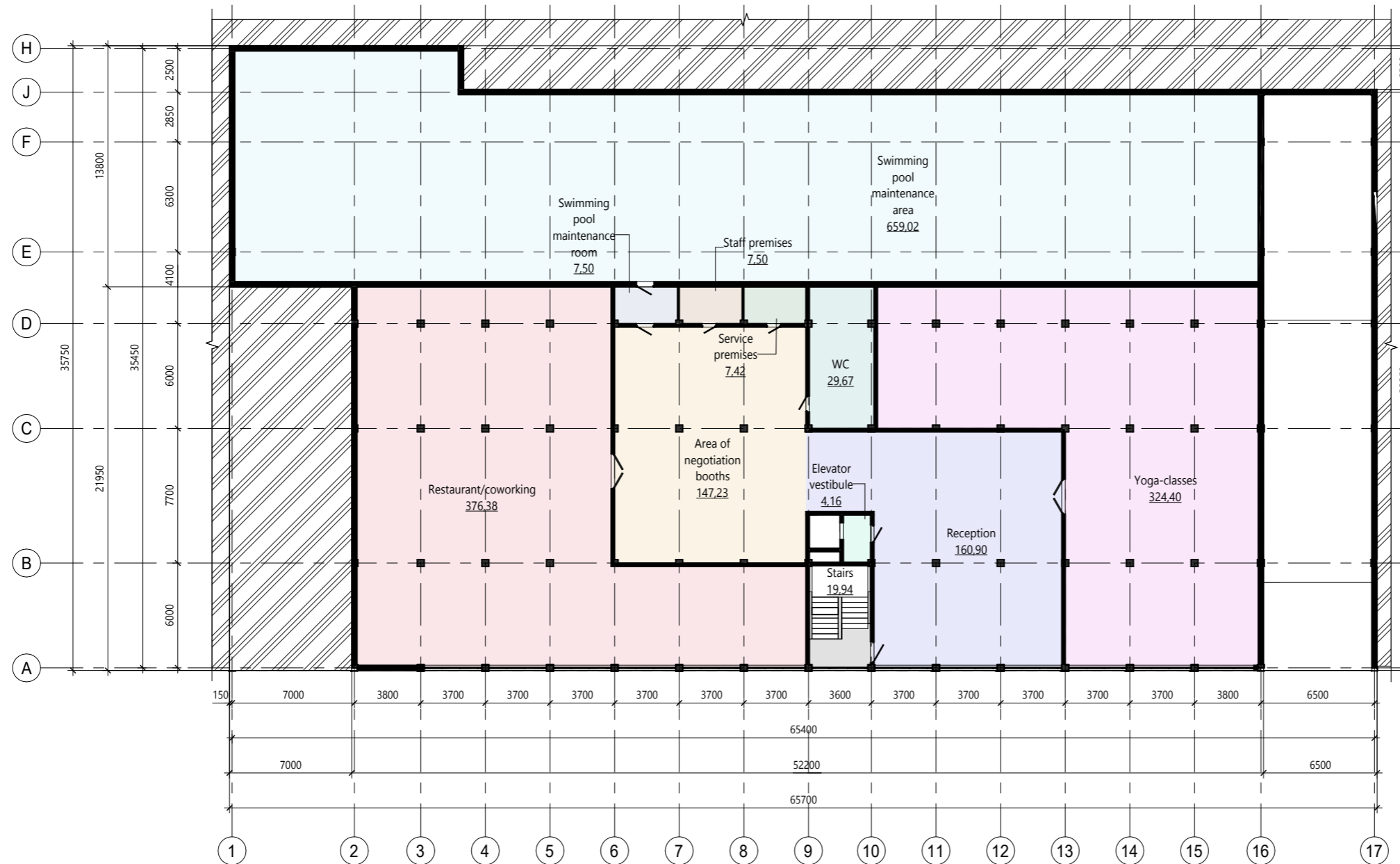


Explication Parking

Nº	Number	S, m ²
001	Parking	2036,46
002	Stairs	19,94
003	Elevator vestibule	4,16
004	Technical premises	35,42
005	Technical premises	31,96
		2127,94

Parking slots:
Cars - 42 pcs.
Motorcycles - 50 pcs.

Building 1, parking



Explication Building 1, 1st floor

No	Name	S, m ²
101	Reception	160,90
102	Stairs	19,94
103	Elevator vestibule	4,16
104	Area of negotiation booths	147,23
105	Restaurant/coworking	376,38
106	Yoga-classes	324,40
107	WC	29,67
108	Swimming pool maintenance room	7,50
109	Staff premises	7,50
110	Service premises	7,42
111	Swimming pool maintenance area	659,02
		1744,10



EXPLANATION OF APARTMENTS BUILDING 1, 2 FLOOR:

Type 1a - 21 pcs.
 Type 2a - 1 pcs.
 Type 3a - 1 pcs.

TOTAL BY FLOOR:

Studios - 21 pcs.
 1-room - 1 pcs.
 2-room - 1 pcs.
 Total - 23 pcs.

Total floor area: 1203.85 m²
 Total apartment area: 791.18 m²
 Total balconies area: 198.37 m²
 Total apartment and balconies area: 989.55 m²

Building 1, 3rd floor



EXPLANATION OF APARTMENTS BUILDING 1, 3rd FLOOR:

Type 1a - 22 pcs.
 Type 2a - 1 pcs.
 Type 3b - 1 pcs.

TOTAL BY FLOOR:

Studios - 22 pcs.
 1-room - 1 pcs.
 2-room - 1 pcs.

Total - 24 pcs.

Total floor area: 1258.52 m²
 Total apartment area: 789.81 m²
 Total balconies area: 257.48 m²
 Total apartment and balconies area: 1047,29 m²

Building 1, 4th floor



EXPLANATION OF APARTMENTS BUILDING 1, 4 FLOOR:

- Type 1a - 8 pcs.
- Type 1a_1 - 1 pcs.
- Type 1c - 1 pcs.
- Type 2c-1 - 2 pcs.
- Type 2c-2 - 1 pcs.
- Type 2d - 1 pcs.
- Type 3c_1 - 1 pcs.
- Type 3d - 1 pcs.
- Type 3e - 1 pcs.

TOTAL BY FLOOR:

- Studios - 10 pcs.
- 1-room - 4 pcs.
- 2-room - 3 pcs.
- Total - 17 pcs.

Total floor area: 1263.61 m²
 Total apartment area: 796.41 m²
 Total balconies area: 262.57 m²
 Total apartment and balconies area: 1058.98 m²

Building 1, 5th floor



EXPLICATION OF APARTMENTS BUILDING 1, FLOOR 5:

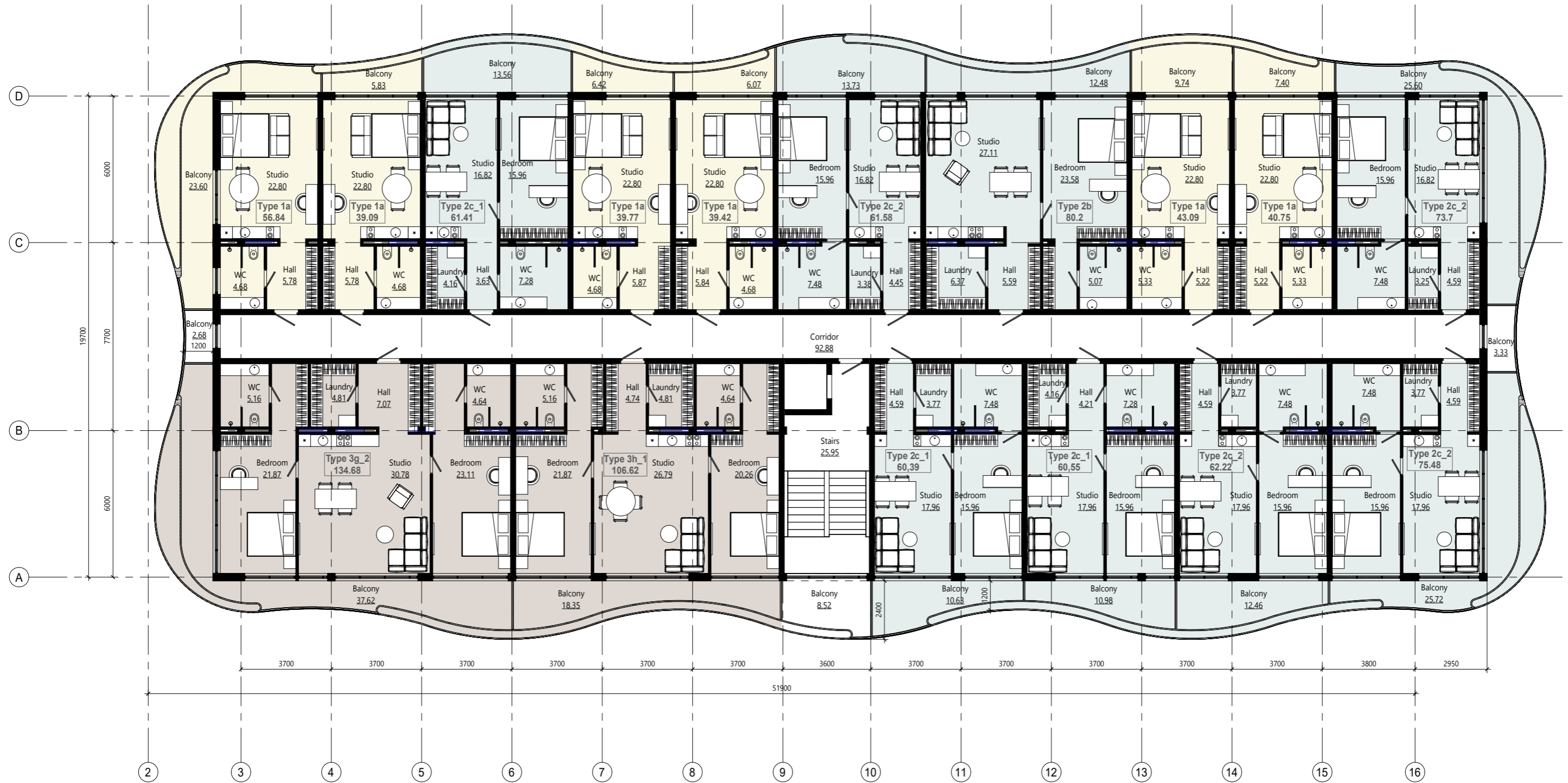
Type 1a - 8 pcs.
 Type 2c-1 - 3 pcs.
 Type 2c-2 - 1 pcs.
 Type 2d - 1 pcs.
 Type 3f-1 - 1 pcs.
 Type 3f-2 - 1 pcs.
 Type 3g-1 - 1 pcs.

TOTAL BY FLOOR:

Studios - 8 pcs.
 1-room - 5 pcs.
 2-room - 3 pcs.
 Total - 16 pcs.

Total floor area: 1258.52 m²
 Total apartment area: 796.65 m²
 Total balconies area: 257.48 m²
 Total apartment and balconies area: 1054.13 m²

Building 1, 6th floor



EXPLICATION OF APARTMENTS BUILDING 1, FLOOR 6:

- Type 1a - 6 pcs.
- Type 2b - 1 pcs.
- Type 2c_1 - 3 pcs.
- Type 2c_2 - 4 pcs.
- Type 3g_2 - 1 pcs.
- Type 3h_1 - 1 pcs.

TOTAL BY FLOOR:

- Studios - 6 pcs.
- 1-room - 8 pcs.
- 2-room - 2 pcs.
- Total - 16 pcs.

Total floor area: 1263.61 m²
 Total apartment area: 796.15 m²
 Total balconies area: 262.57 m²
 Total apartment and balconies area: 1058.72 m²

Building 1, 7th floor



EXPLICATION OF APARTMENTS BUILDING 1, FLOOR 7:

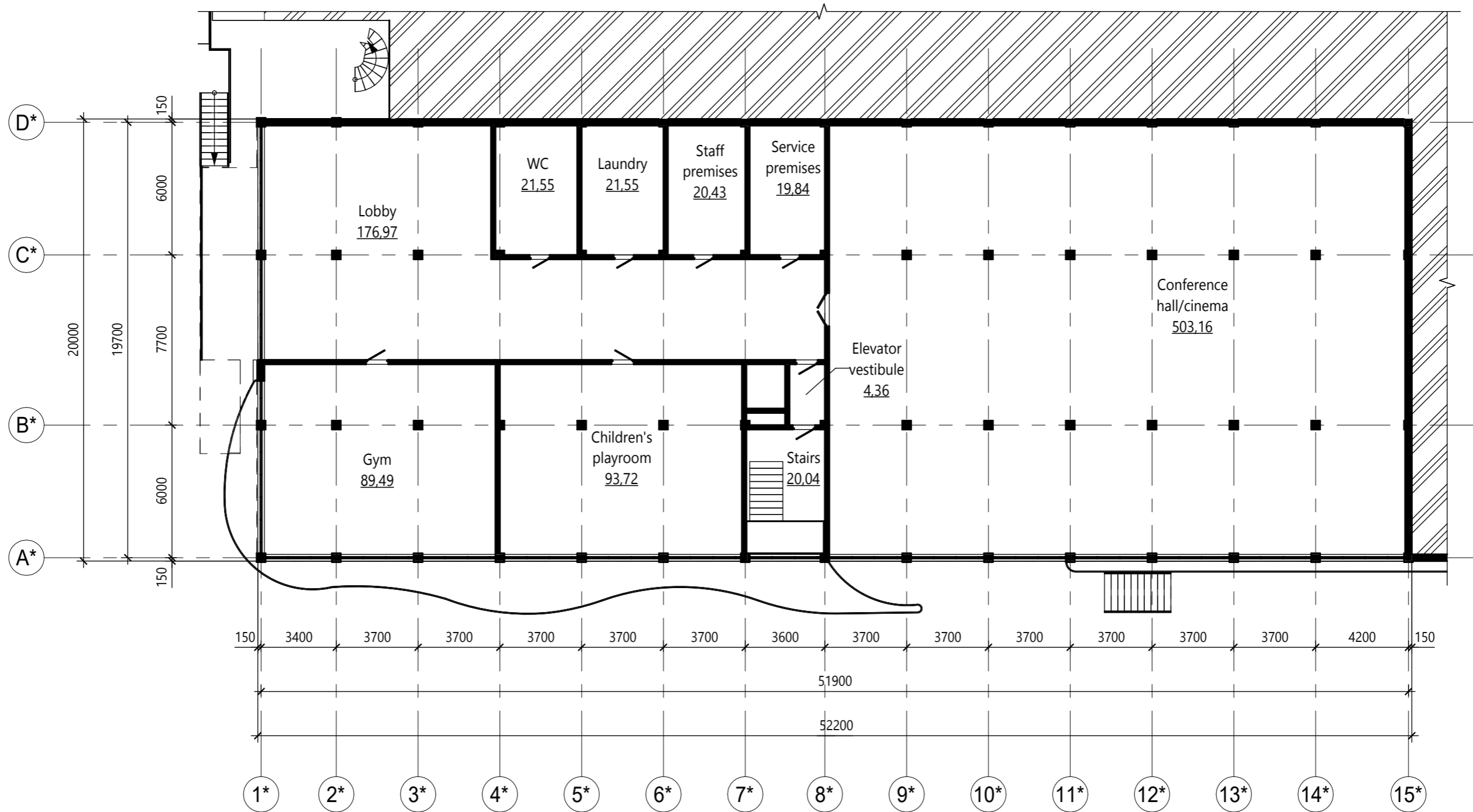
- Type 1a - 2 pcs.
- Type 2c-1 - 4 pcs.
- Type 2c-2 - 1 pcs.
- Type 2g - 1 pcs.
- Type 3c_1 - 1 pcs.
- Type 3c_2 - 2 pcs.
- Type 3e - 1 pcs.
- Type 3f_3 - 1 pcs.

TOTAL BY FLOOR:

- Studios - 2 pcs.
- 1-room - 6 pcs.
- 2-room - 5 pcs.
- Total - 13 pcs.

Total floor area: 1258.52 m²
 Total apartment area: 797.79 m²
 Total balconies area: 257.48 m²
 Total apartment and balconies area: 1055.27 m²

Building 2, 1st floor



Building 2, 2nd floor



EXPLICATION OF APARTMENTS BUILDING 2, 2rd FLOOR:

- Type 1a - 15 pcs.
- Type 2c_1 - 2 pcs.
- Type 2c_2 - 1 pcs.
- Type 3f_1 - 1 pcs.
- Type 4a - 1 pcs.

TOTAL BY FLOOR:

- Studios - 15 pcs.
- 1-room - 3 pcs.
- 3-room - 1 pcs.
- 4-room - 1 pcs.

Total - 20

Total floor area: 1217.44 m²
 Total apartment area: 807.96 m²
 Total balconies area: 216.40 m²
 Total apartment and balconies area: 1024.36 m²

Building 2, 3rd floor



EXPLICATION OF APARTMENTS BUILDING 2, 3rd FLOOR:

Type 1a - 20 pcs.
 Type 2c_2 - 1 pcs.
 Type 4b - 1 pcs.

TOTAL BY FLOOR:

Studios - 20 pcs.
 1-room - 1 pcs.
 3-room - 1 pcs.

Total - 22

Total floor area: 1258.52 m²
 Total apartment area: 804.73 m²
 Total balconies area: 257.48 m²
 Total apartment and balconies area: 1062.21 m²

Building 2, 4th floor



EXPLANATION OF APARTMENTS BUILDING 2, 4th FLOOR:

Type 1a - 2 pcs.
 Type 1a_1 - 1 pcs.
 Type 2c_1 - 10 pcs.
 Type 3c_2 - 1 pcs.
 Type 4c - 1 pcs.

TOTAL BY FLOOR:

Studios - 3 pcs.
 1-room - 10 pcs.
 2-room - 1 pcs.
 3-room - 1 pcs.

Total - 15

Total floor area: 1263.61 m²
 Total apartment area: 808.96 m²
 Total balconies area: 254.30 m²
 Total apartment and balconies area: 1063.26 m²

Building 2, 5th floor



EXPLICATION OF APARTMENTS BUILDING 2, 5th FLOOR:

- Type 1a - 7 pcs.
- Type 2c_1 - 1 pcs.
- Type 2c_2 - 4 pcs.
- Type 3c_2 - 2 pcs.
- Type 4d - 1 pcs.

TOTAL BY FLOOR:

- Studios - 7 pcs.
- 1-room - 5 pcs.
- 2-room - 2 pcs.
- 3-room - 1 pcs.
- Total - 15

Total floor area: 1258.52 m²
 Total apartment area: 807.59 m²
 Total balconies area: 257.48 m²
 Total apartment and balconies area: 1065.07 m²

Building 2, 6th floor



EXPLICATION OF APARTMENTS BUILDING 2, 6th FLOOR:

- Type 1a - 6 pcs.
- Type 2c_2 - 3 pcs.
- Type 3c_1 - 1 pcs.
- Type 3c_2 - 2 pcs.
- Type 3e- 1 pcs.
- Type 4d_1 - 1 pcs.

TOTAL BY FLOOR:

- Studios - 6 pcs.
- 1-room - 3 pcs.
- 2-room - 4 pcs.
- 3-room - 1 pcs.
- Total - 14

Total floor area: 1263.61 m²
 Total apartment area: 809.29 m²
 Total balconies area: 254.8 m²
 Total apartment and balconies area: 1064.09 m²

Building 2, 7th floor



EXPLANATION OF APARTMENTS BUILDING 2, 7th FLOOR:

Type 1a - 7 pcs.
 Type 2c_1 - 1 pcs.
 Type 2c_2 - 3 pcs.
 Type 3c_1 - 1 pcs.
 Type 3c_2 - 2 pcs.
 Type 4e - 1 pcs.

TOTAL BY FLOOR:

Studios - 7 pcs.
 1-room - 4 pcs.
 2-room - 3 pcs.
 3-room - 1 pcs.
 Total - 15

Total floor area: 1258.52 m²
 Total apartment area: 805.83 m²
 Total balconies area: 257.48 m²
 Total apartment and balconies area: 1063.31 m²

Building 2, 8th floor



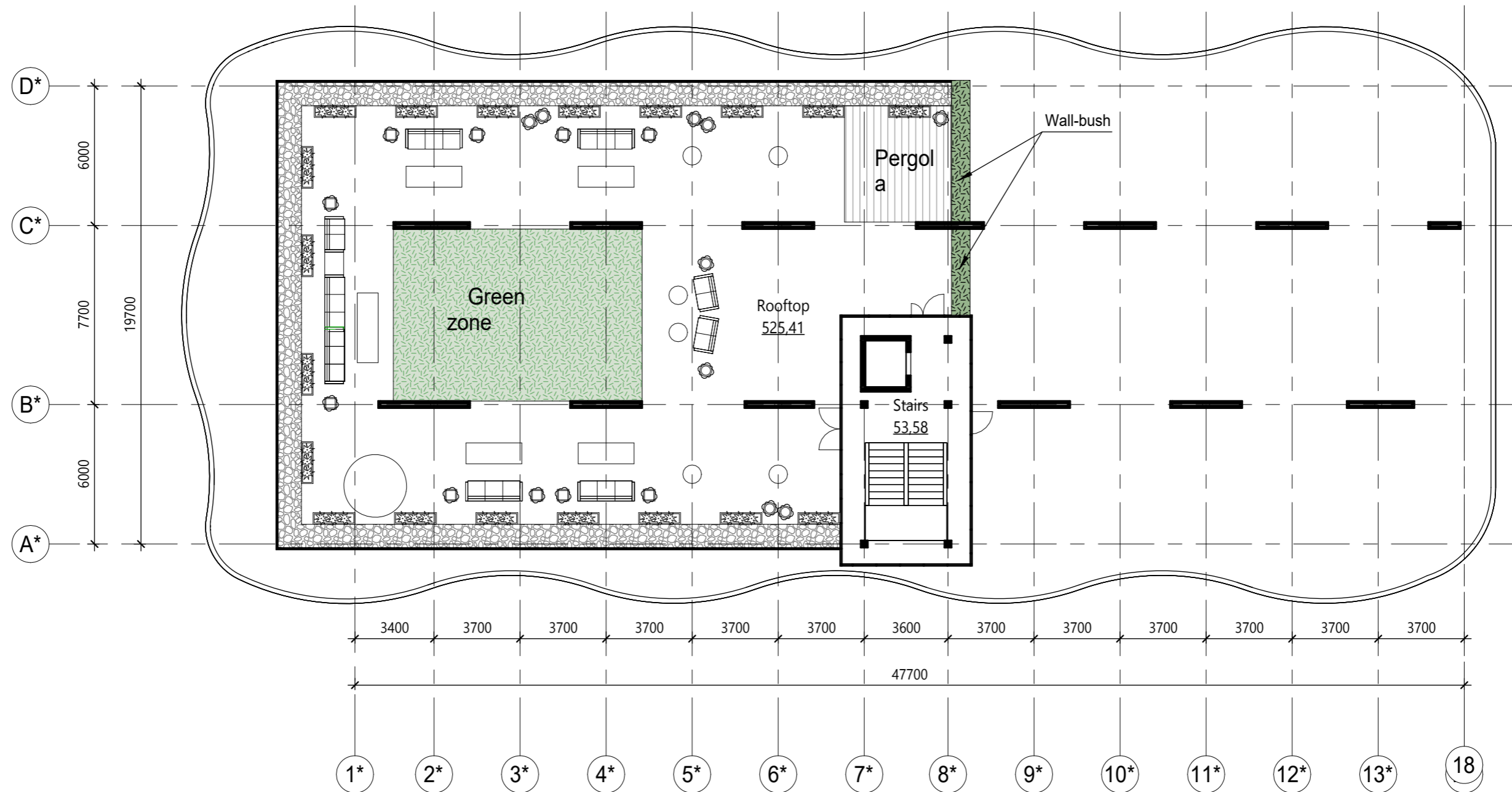
EXPLICATION OF APARTMENTS BUILDING 2, 8th FLOOR:

- Type 1a - 9 pcs.
- Type 1a_1 - 1 pcs.
- Type 2c_1 - 1 pcs.
- Type 2c_2 - 3 pcs.
- Type 3c_1 - 1 pcs.
- Type 3c_2 - 1 pcs.
- Type 4f - 1 pcs.

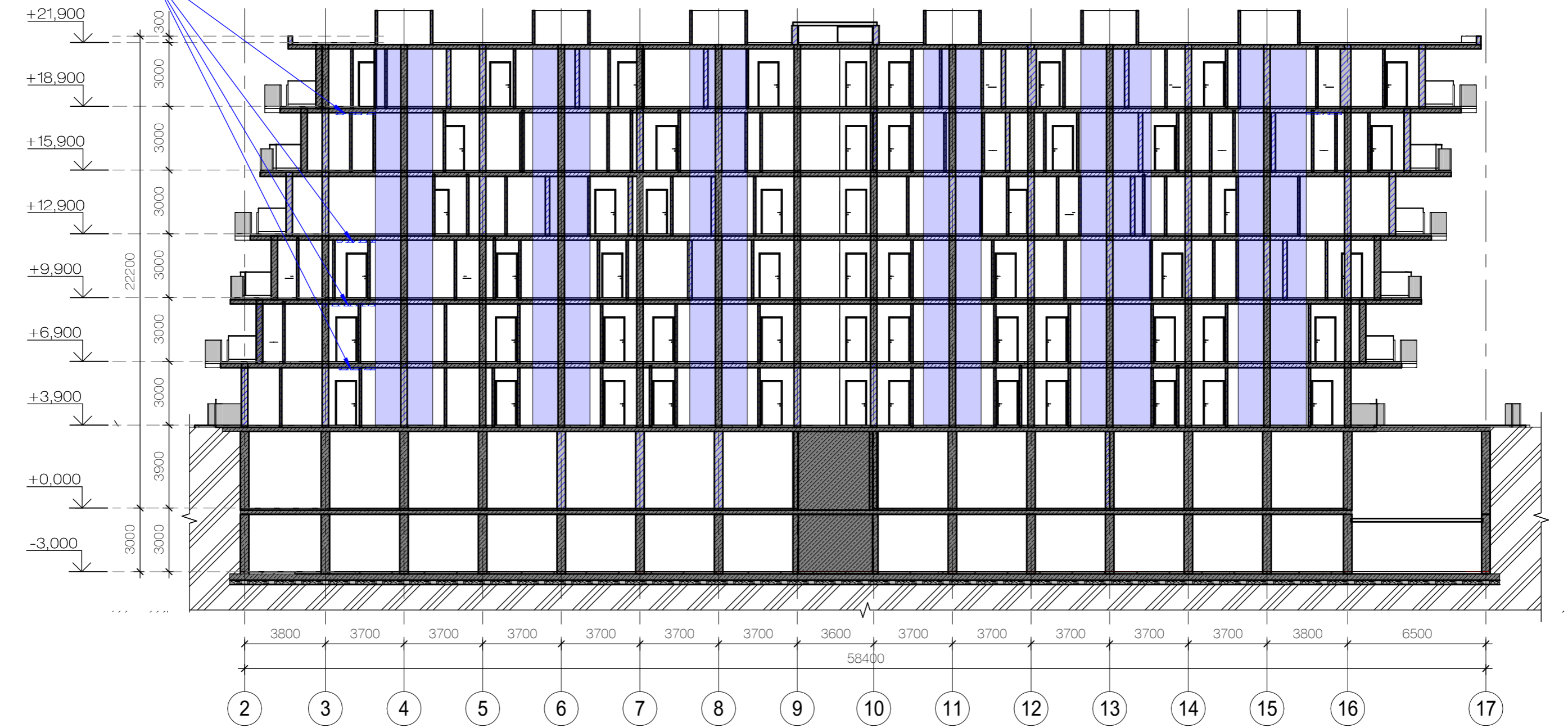
TOTAL BY FLOOR:



- Studios - 10 pcs.
- 1-room - 4 pcs.
- 2-room - 2 pcs.
- 3-room - 1 pcs.
- Total - 17

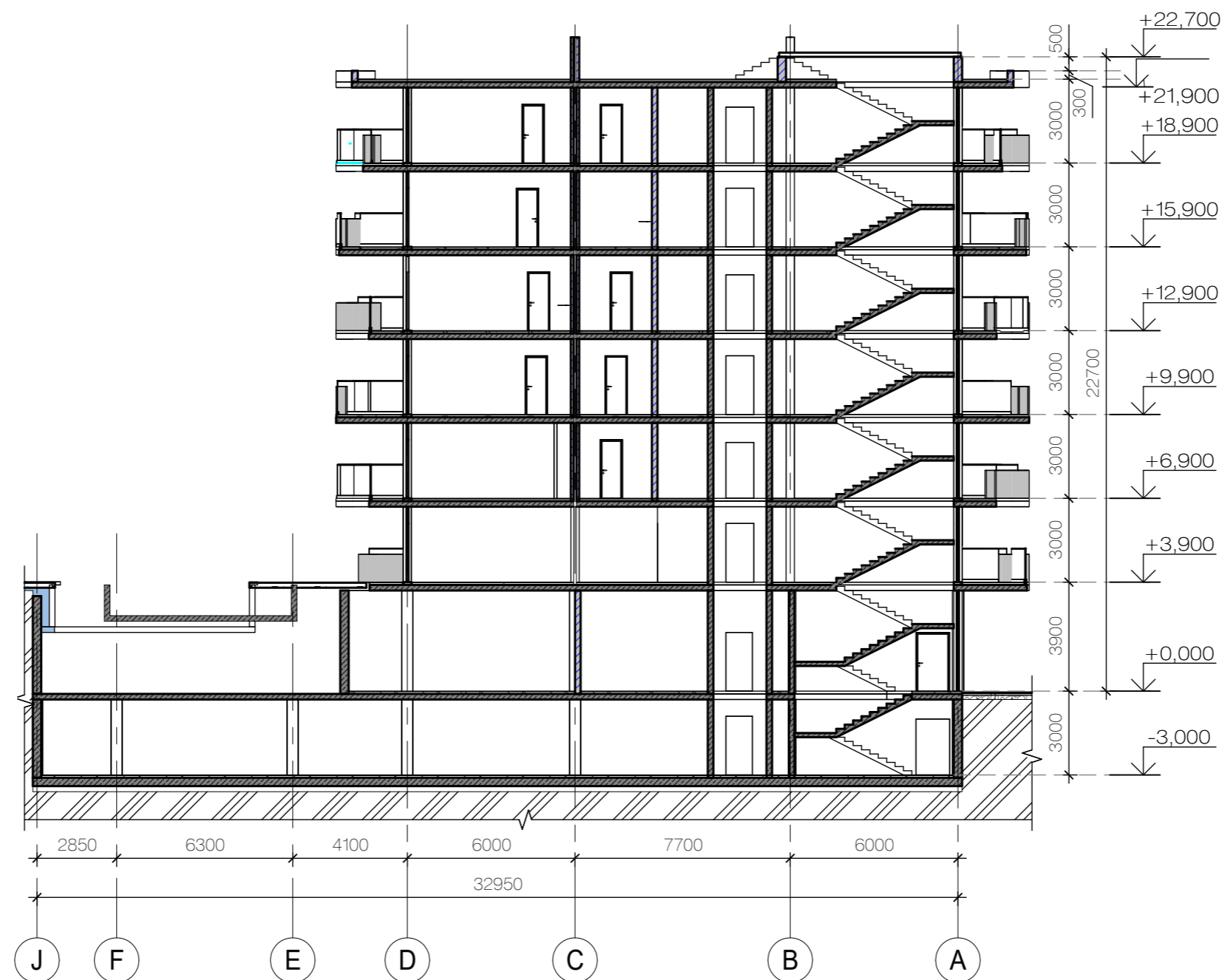
Total floor area: 1263.61 m²
 Total apartment area: 807.72 m²
 Total balconies area: 254.71 m²
 Total apartment and balconies area: 1062.43 m²

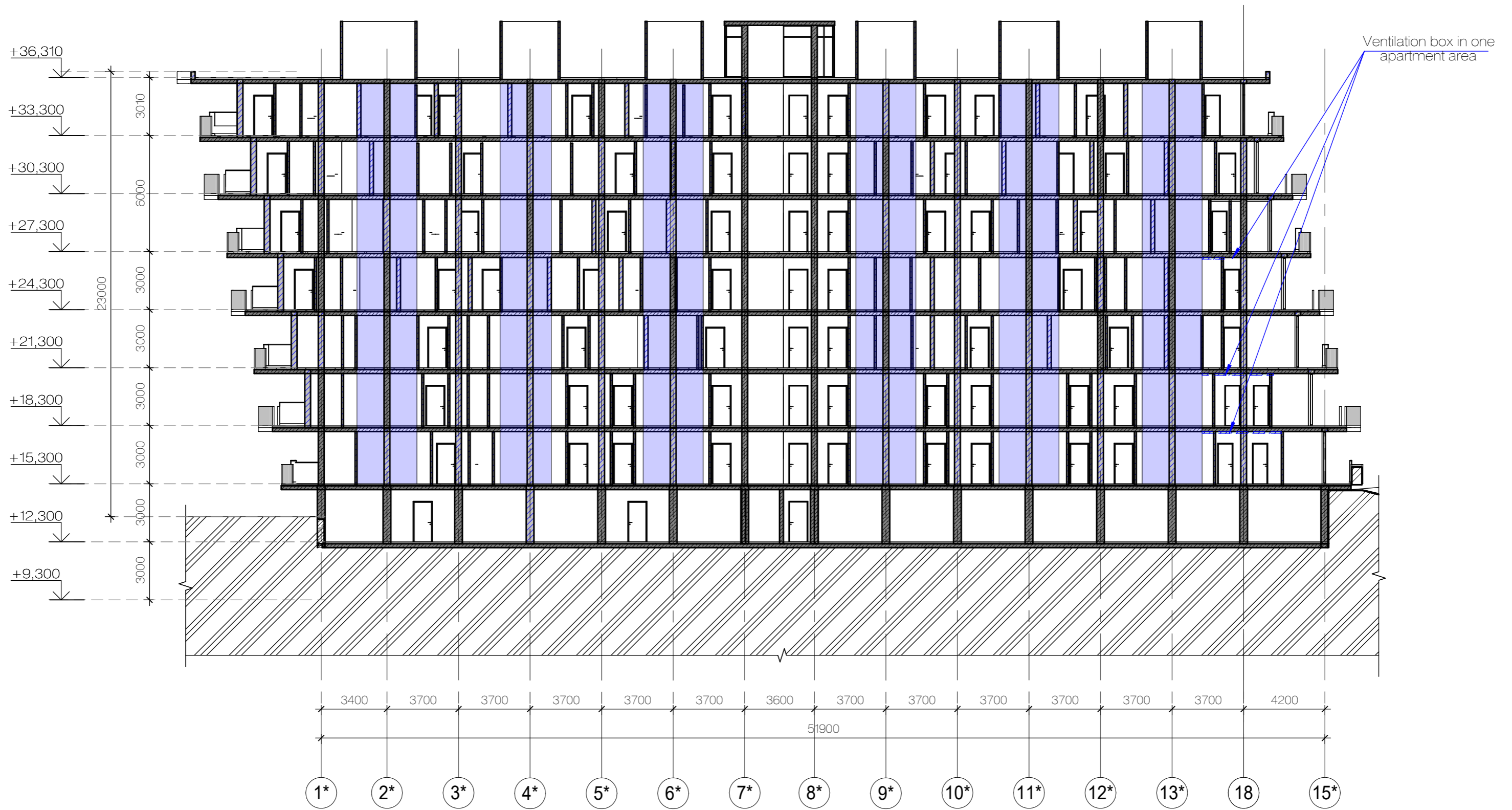




Ventilation box in one apartment area

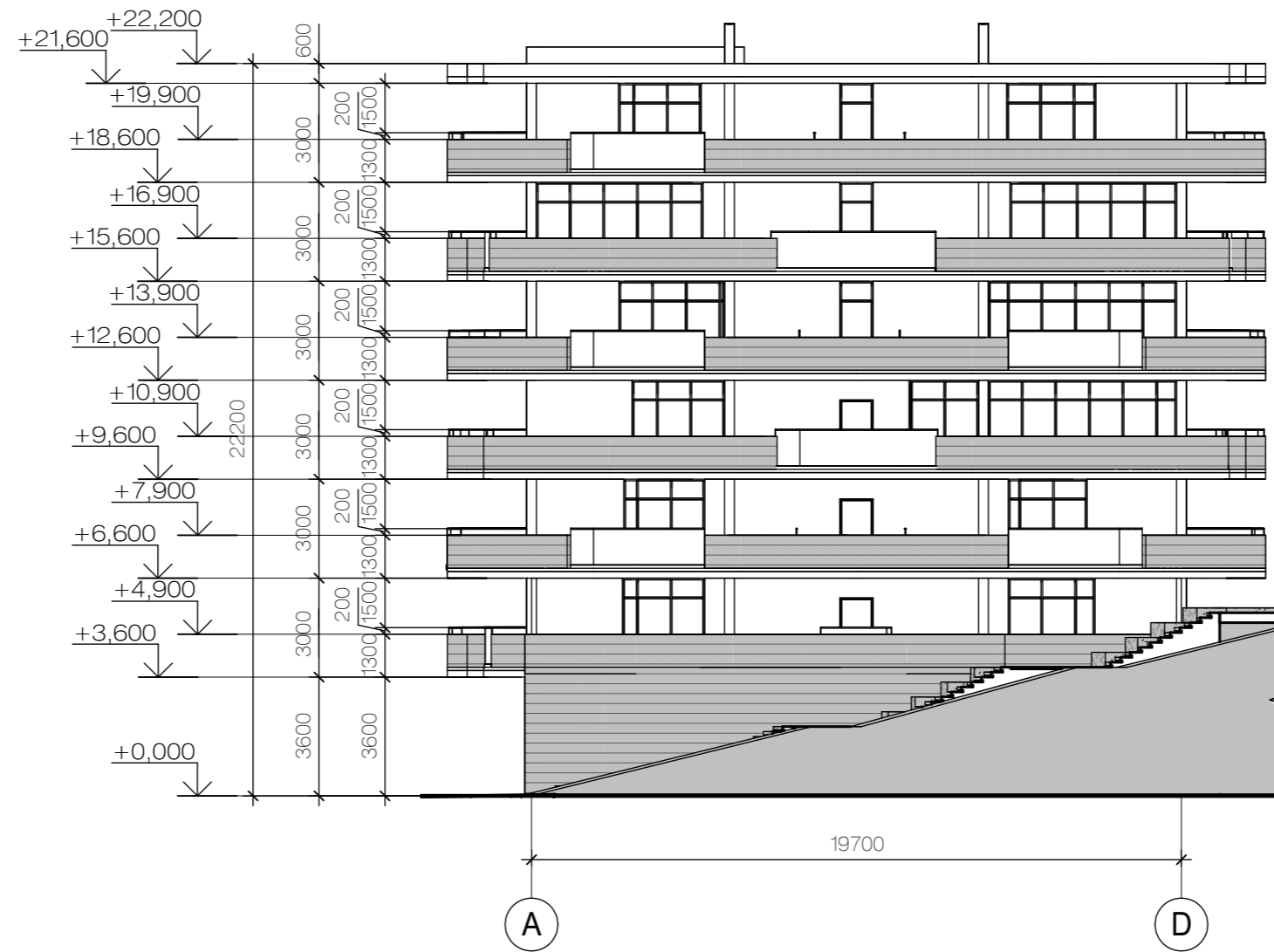


-  - WC and kitchens
-  - Ventilation



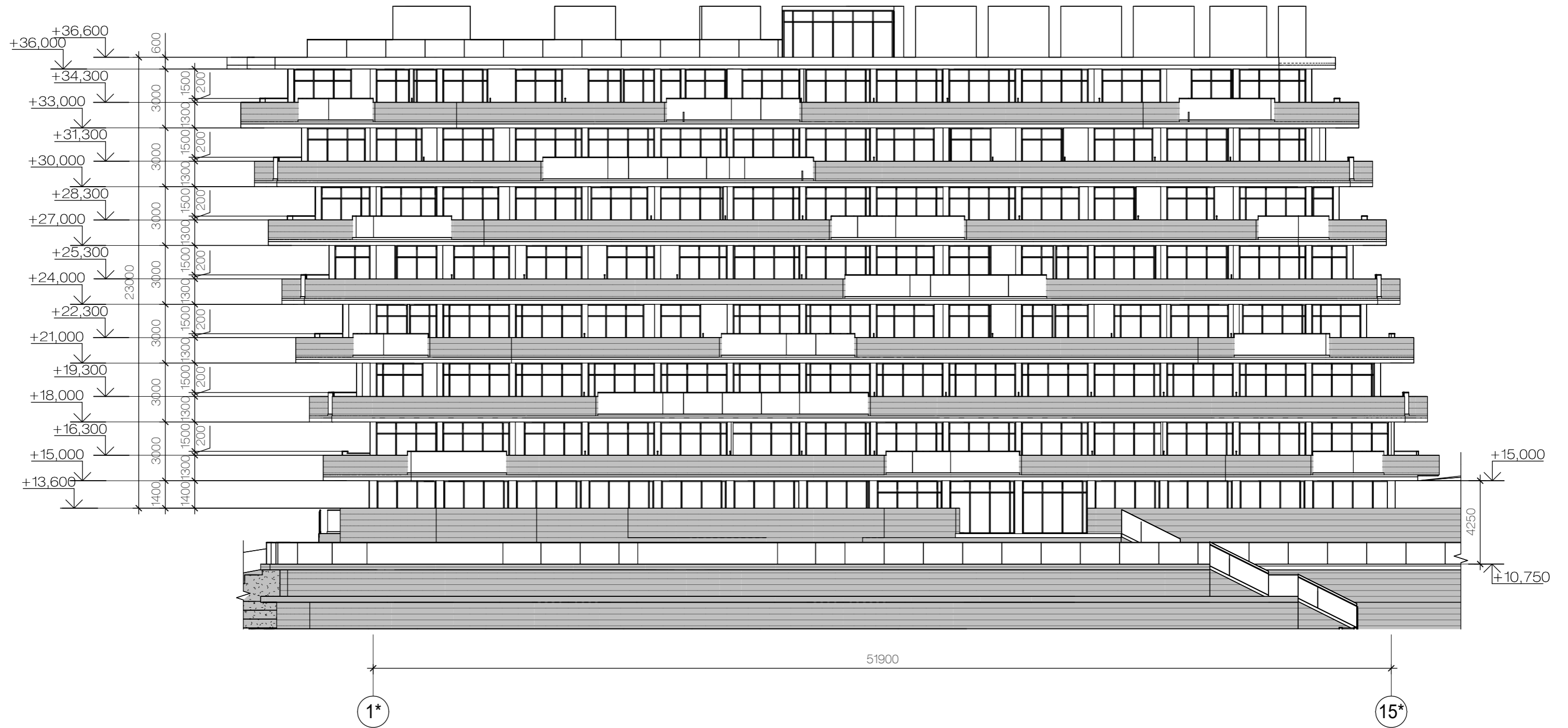


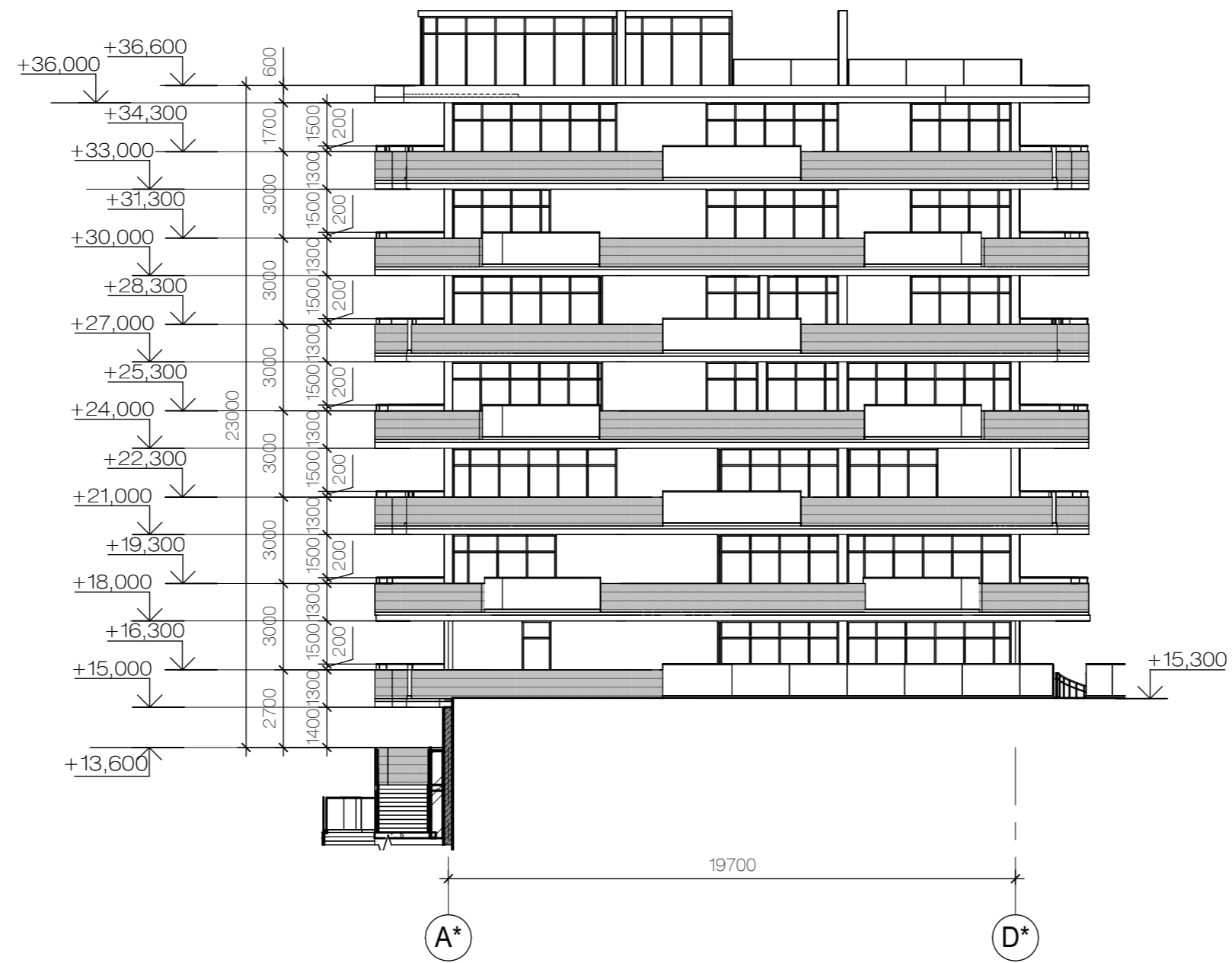
-  - WC and kitchens
-  - Ventilation



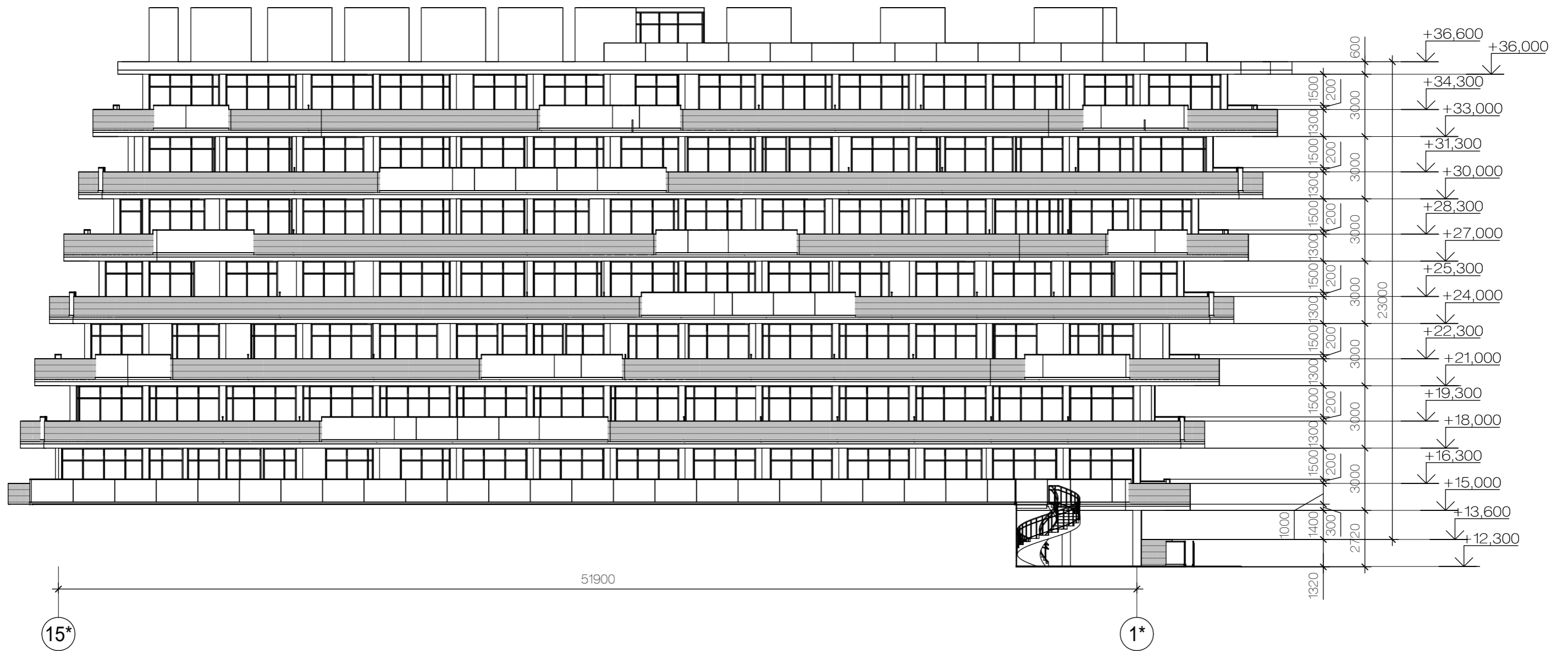


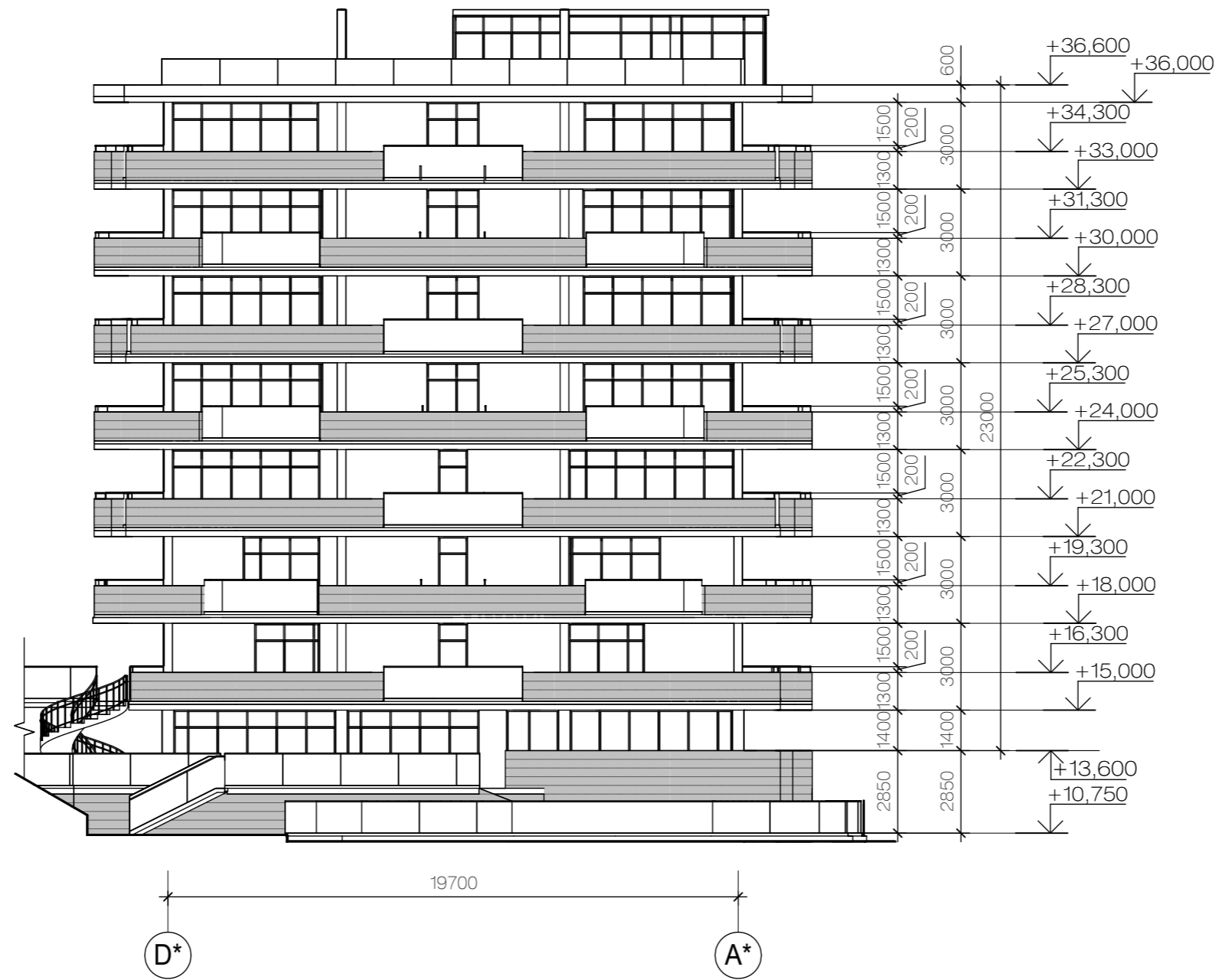
Building 2. Facade 1

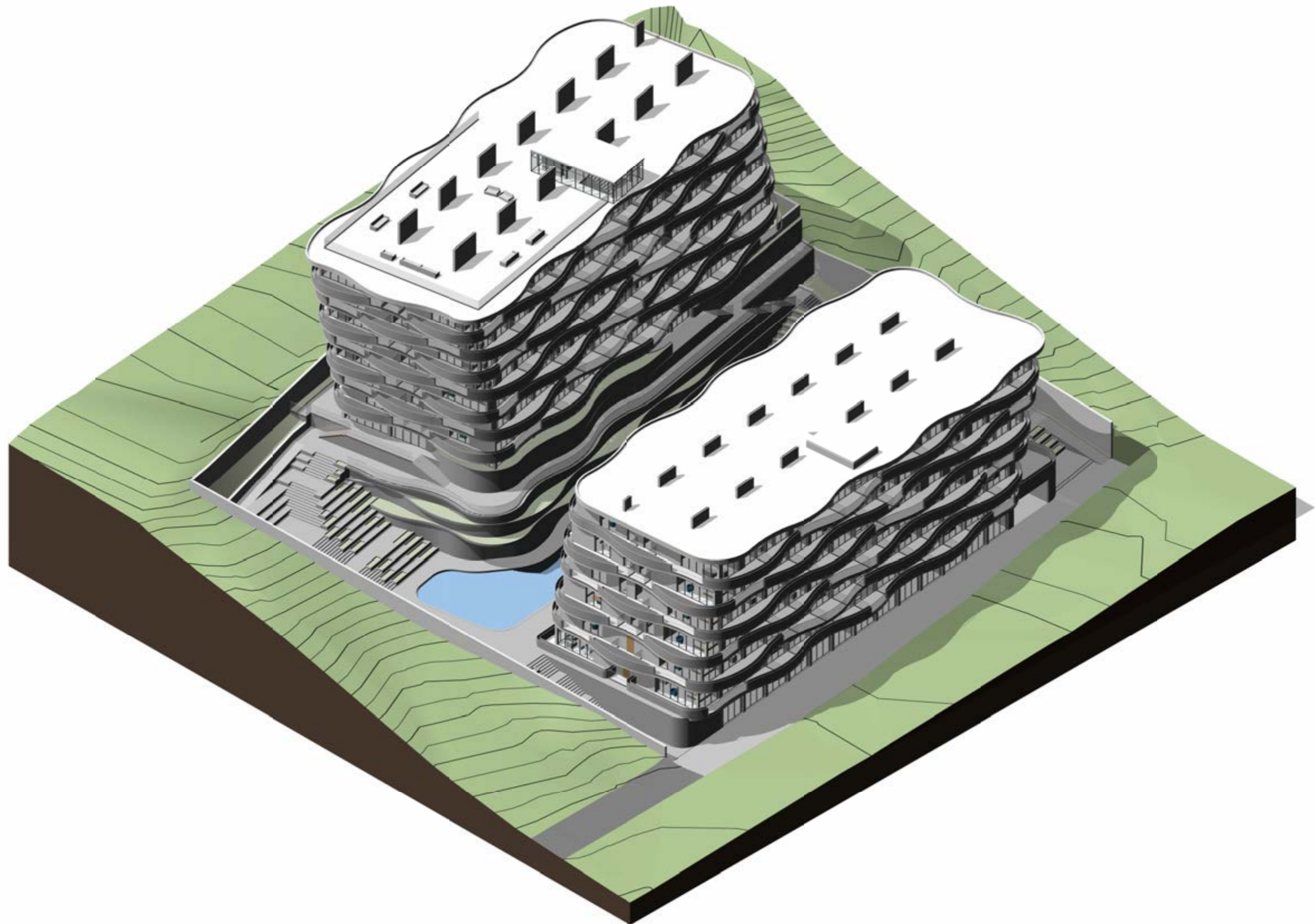


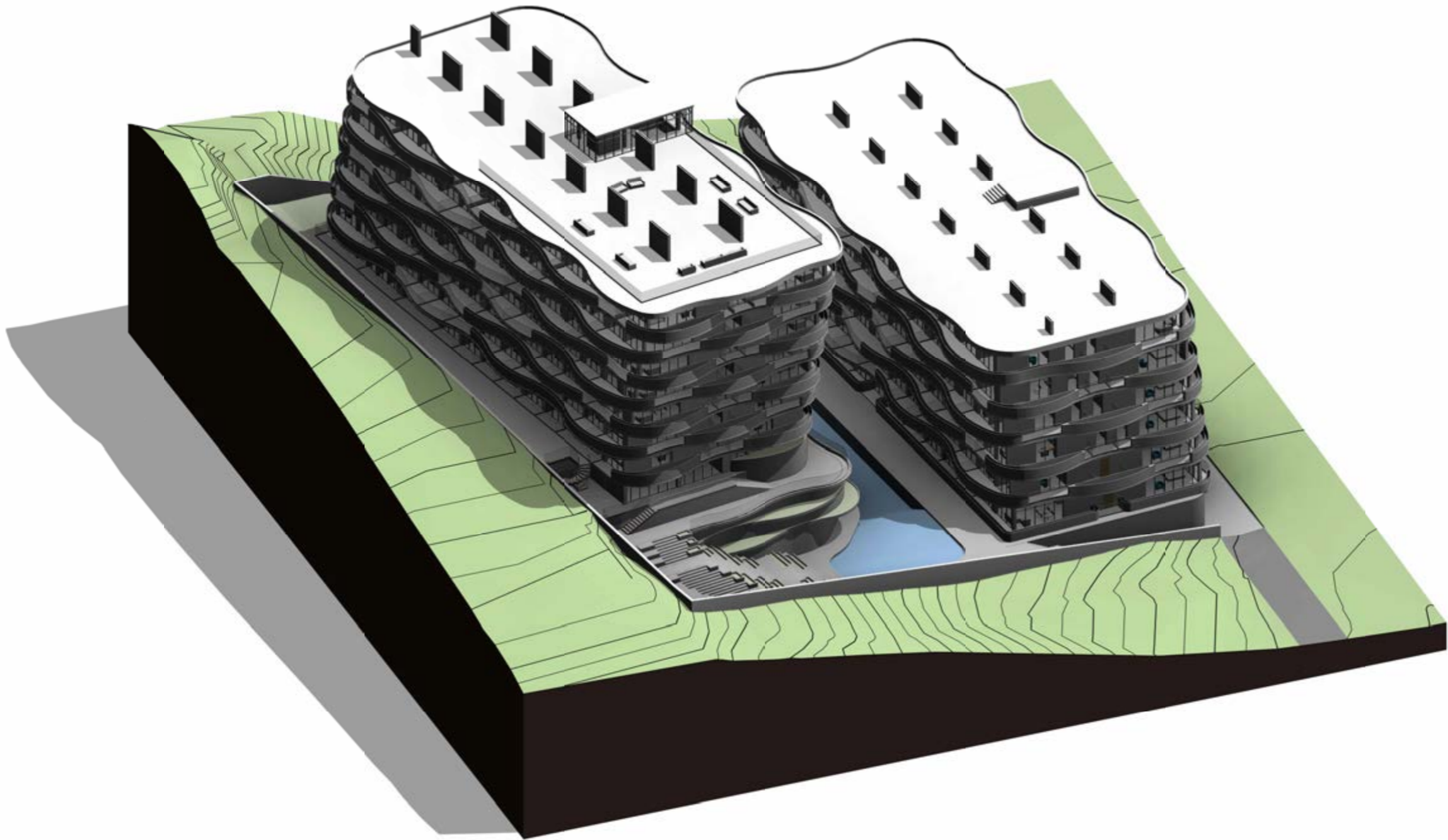


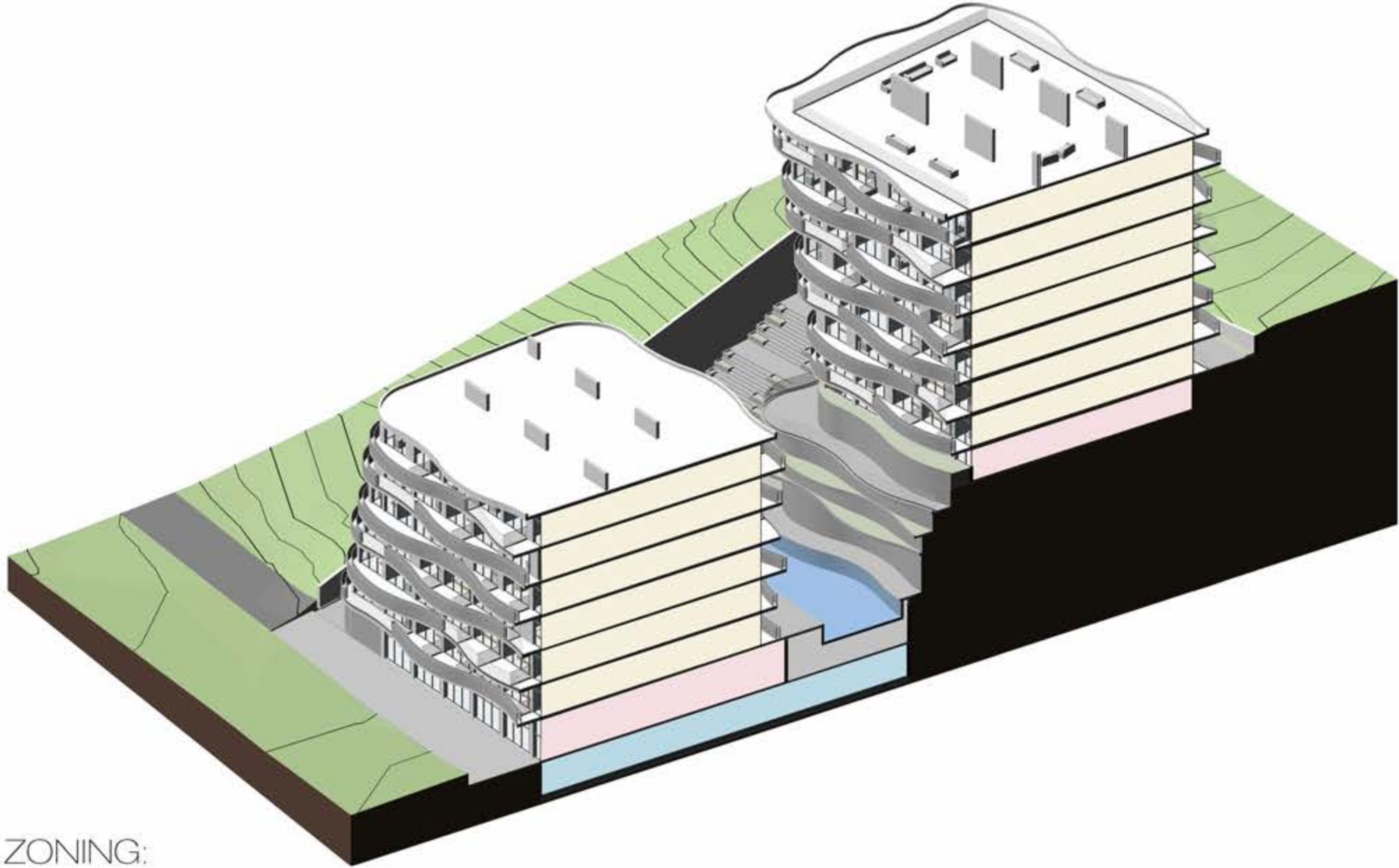
Building 2. Facade 3





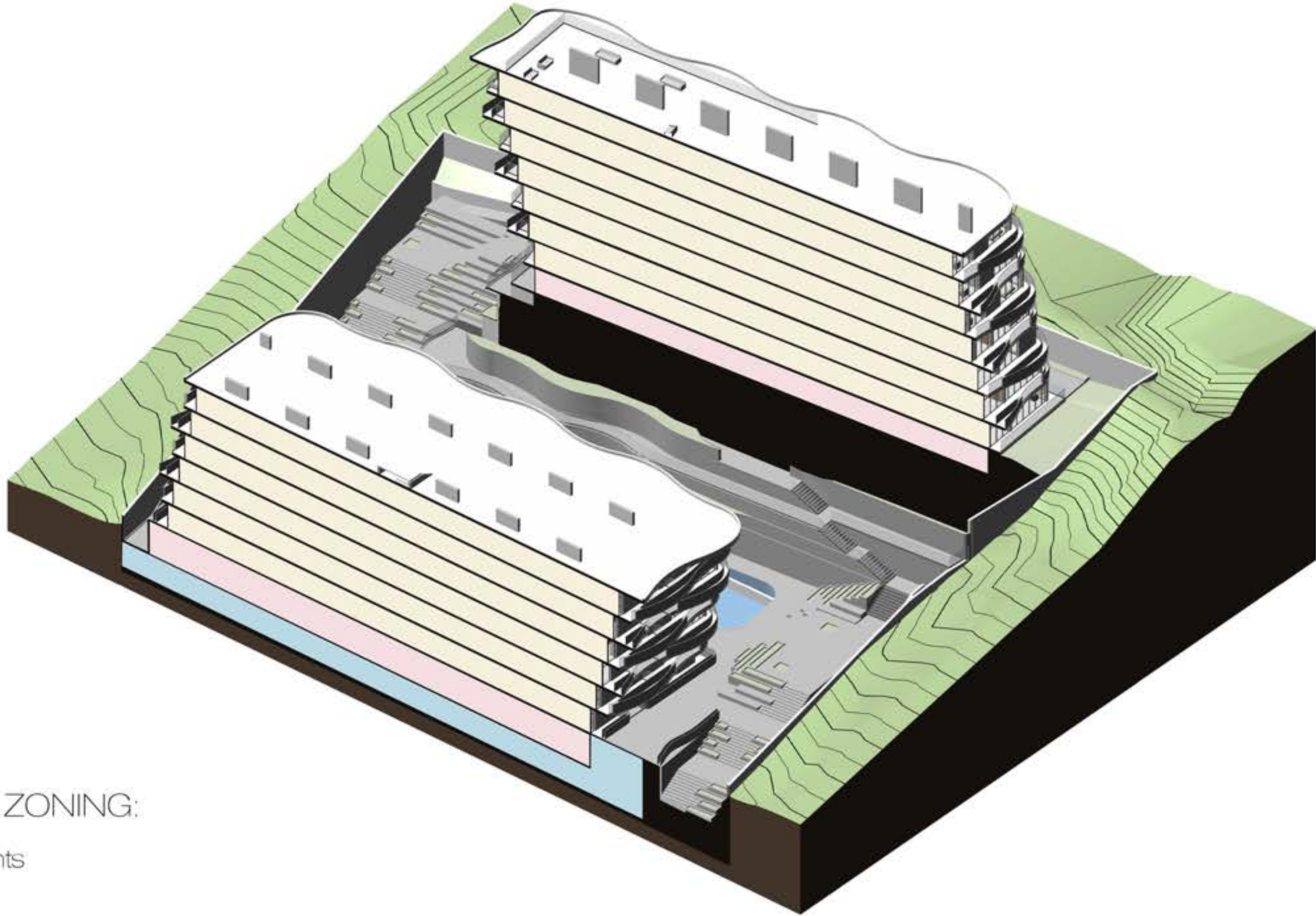






FUNCTIONAL ZONING:

- apartments
- comercial
- parking



FUNCTIONAL ZONING:

- apartments
- comertial
- parking