

ONE
RIVER POINT



BUSINESS BAY

ONE RIVER POINT

Crafted and curated with the design connoisseur in mind, One River Point is Ellington's latest arrival in Business Bay. Located on the southwest side, its vast triangular plot faces Dubai Water Canal to the north. In addition to a wealth of sumptuous amenities, the building offers studios, one, two, and three bedroom apartments, as well as duplexes and penthouse suites.

The atmosphere inside is soft, contemporary, and welcoming, with low lighting that emulates a calm return from the vitality that keeps Business Bay one of Dubai's most eclectic and inspiring locations.



BUSINESS BAY'S MOST
ECLECTIC LIFESTYLE





 ELLINGTON | **DUTCO**

Ellington Properties and Dutco are bringing together a wealth of experience and expertise in the development of One River Point.

Combining Ellington's resident-first philosophy with the attention to detail and efficiency for which Dutco is renowned, we can achieve perfection with speed. Our partnership marks a new era of growth for Ellington, and the rapid expansion of Dubai.



THE RHYTHM OF THE CITY

Business Bay has long held a reputation for being home to a vibrant community of innovation and aspiration. It has since attracted a wealth of exciting venues for dining, art culture, and socialising.

With its canalside spaces, collection of fitness amenities, and, of course, close connection to Downtown Dubai, residents of One River Point take full advantage of Dubai's wealth of opportunities.



CANALSIDE COSMOPOLITAN
WITH DUBAI WATER CANAL VIEWS



Dubai Water Canal Boardwalk	1 minute
Dubai Waterfall	2 minutes
Business Bay Metro Station Business Bay Marina Al Quoz Pond Park	5 minutes
Burj Khalifa Dubai Mall	7 minutes
Museum of The Future	8 minutes
Dubai International Financial Centre City Walk Meydan Racecourse	10 minutes
Mall of the Emirates	13 minutes
Dubai Design District Dubai Festival City Kite Beach	15 minutes
Burj Al Arab	17 minutes
Palm Jumeirah	19 minutes
Emirates Golf Club Dubai International Airport	20 minutes
Al Maktoum International Airport	39 minutes

DRIVING DISTANCES





MAKE AN ENTRANCE

Returning home via one of the area's cycle routes, by car, or via taxi using the hotel-style drop-off area with concierge service, the entrance lobby at One River Point is always a warm welcome. A bright and active space, the lobby is centred on beautiful marble flooring.







SOPHISTICATION
WITH AN EDGE

WHERE STYLE MEETS CHARACTER

Refined in its detailing and expressive in its tone, One River Point creates the warmth of home and amplifies modern life at its most beautiful.

Contemporary aesthetics, cutting-edge technology, and a prime location connect residents to a lifestyle that crosses paths, creates opportunities, and revitalises wellbeing. The entire building, inside and out is created to help its residents flourish in their new home.

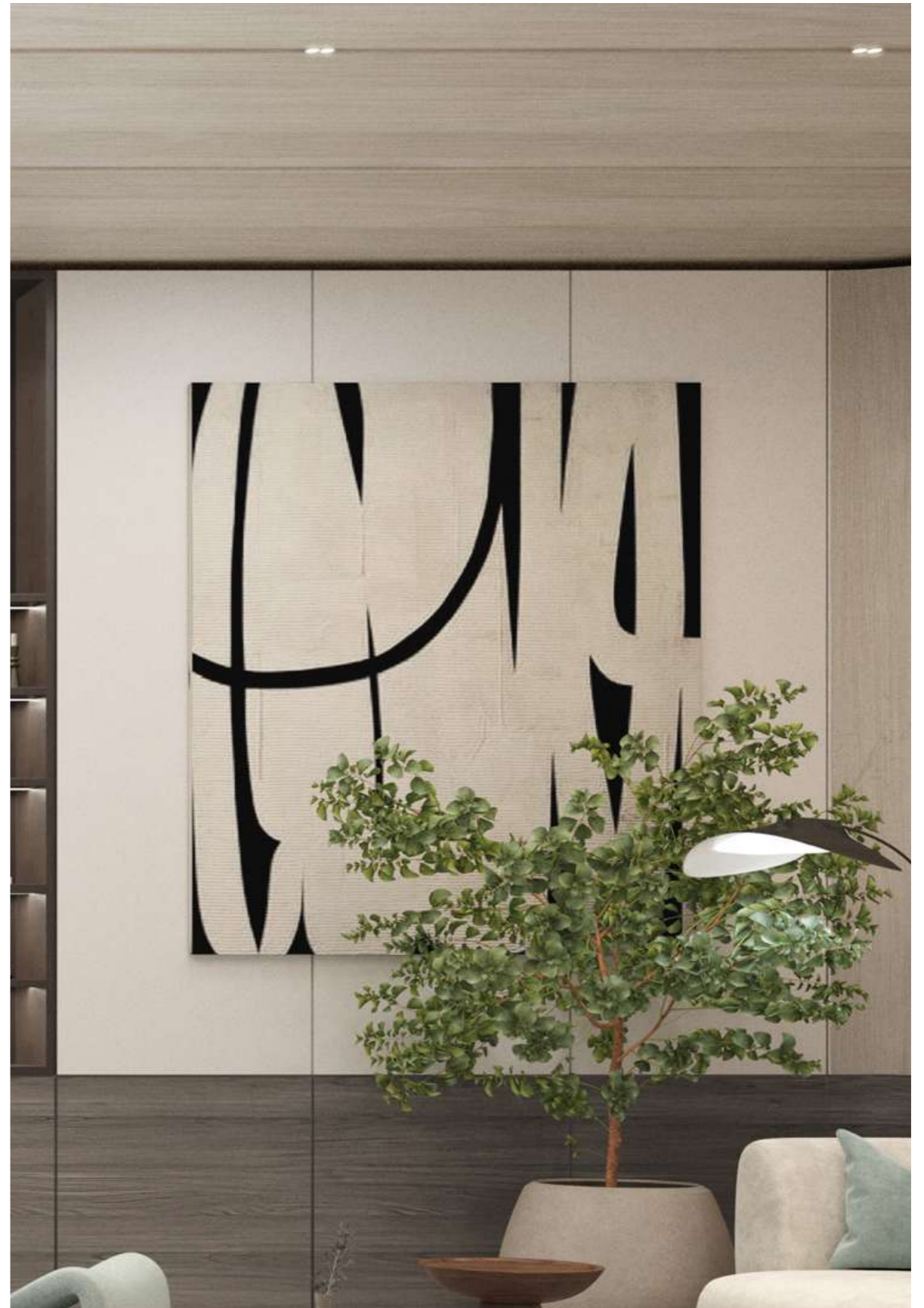
The presence of local artists adds to this positive influence, with their works on display throughout the corridors.



SEAMLESS FLOW

With sparkling canals on either side, the podium marks the base of One River Point, the triangular structure from which the property gets its name.

The podium marks a confidence that means to go on, housing a pool and decking area on its roof before the tower extends upwards in exquisite architectural layers.





THE RIVER CLUB

Balanced on the outermost point of The Podium, the pool deck at One River Point provides a shaded terrace, family and adult infinity pools, BBQ areas and sun-loungers.

It is the ideal place for watching the sun go down over the canal, elevated, sophisticated and relaxing, The River Club is already set to be a favourite of One River Point residents.



FLOW AND DYNAMISM





THE CLUBHOUSE

A refined interiors palette invites you to a sophisticated shared space. Formal yet dynamic, the Clubhouse sits on the upper floor of The Podium, overlooking the swimming pool through large glass doors.

Opening into an elegant lounge space, with sumptuous furnishings, co-working spaces, a coffee station and pantry, it is an ideal meeting spot to inspire your next idea.



KID'S PLAY AREAS

Children at One River Point are encouraged to learn, play and explore among the property's dynamic spaces. Indoors, children have access to interactive toys and games, as well as children's furniture, bathrooms and baby change.

The Podium features a playground equipped with soft features and high-end play equipment, and, for poolside fun, there is a dedicated kids' splash play area for endless entertainment.



INDOOR AND OUTDOOR
ADVENTURES





IMMERSIVE ROOM

Enter a zone of contemplation and find a moment away from your busy life. In this unique experience at One River Point, residents can immerse themselves in a portal-like experience. The room instills a calming presence straight away, as you lie on one of the day beds strategically placed around the room, a multi-projector display fills the space with beautiful patterns and textures.



FITNESS CENTER

Designed to help One River Point residents achieve balance, the fitness centre creates space for workouts, stretches and mindfulness practices. The layout is professionally certified and equipped with high-end equipment, a climbing net, as well as spa-like showers and changing rooms.

There is also an interactive yoga screen and studio overlooking the pool terrace.



VITALITY THROUGH DESIGN





YOGA STUDIO

The yoga studio serves as a haven for well-being, with a thoughtful design that aims to foster a deeper connection between the body, mind, and the natural beauty outside its windows. The ambiance is intentionally calming, with a focus on the mesmerizing canal views.

To boost both functionality and visual appeal, sturdy wooden flooring provides a stable and comfortable foundation for yoga practice, ensuring a secure experience for everyone. Additionally, a cutting-edge virtual trainer is projected onto the wall, guiding participants through their yoga sessions with expert guidance and precision.



THE RESIDENCES

One River Point is tailored to a range of lifestyles, offering a beautifully designed collection of studios, apartments, four-bedroom duplexes, and decadent penthouses with private swimming pools. While different in their character, every home at One River Point encapsulates style and quality, down to the last detail.



DESIGNED WITH
PERSONALITY





LIVING SPACES

Clean design and contemporary floor plans create a playful dynamic between floods of natural light and shadow. This interplay is the result of expansive windows softening darker tones and illuminating the space. High ceilings and expansive balconies draw on this interplay, bringing about a unique yet sophisticated personality in every home.



THE KITCHENS

Floor-to-ceiling windows allow natural light to fill the modern kitchens of One River Point. Contrasting with the black accents and elevating the neutral colour palette, the light brings out an edge of sophistication surrounding the ingenious storage solutions, appliances, and integrated spaces. At the centre, a grand kitchen island draws the family to a space for enjoying quality time together, over food, social occasions, and coffee.

Specifically selected for 3-bedroom apartments, Duplexes and Penthouses, are a bespoke collection of extra kitchen appliances. This includes an integrated waterfall drop-in sink, in a sleek and contemporary gunmetal grey, featuring rainfall and pull-out faucets, a cup washer, drain control, chopping board, and drain basket. Additionally, our most exclusive kitchens will feature an integrated energy-efficient Teka Downdraft Hood Slider with touch control settings and charcoal filter.



IMBUED WITH
THE WARMTH OF HOME





BATHROOMS & POWDER ROOMS

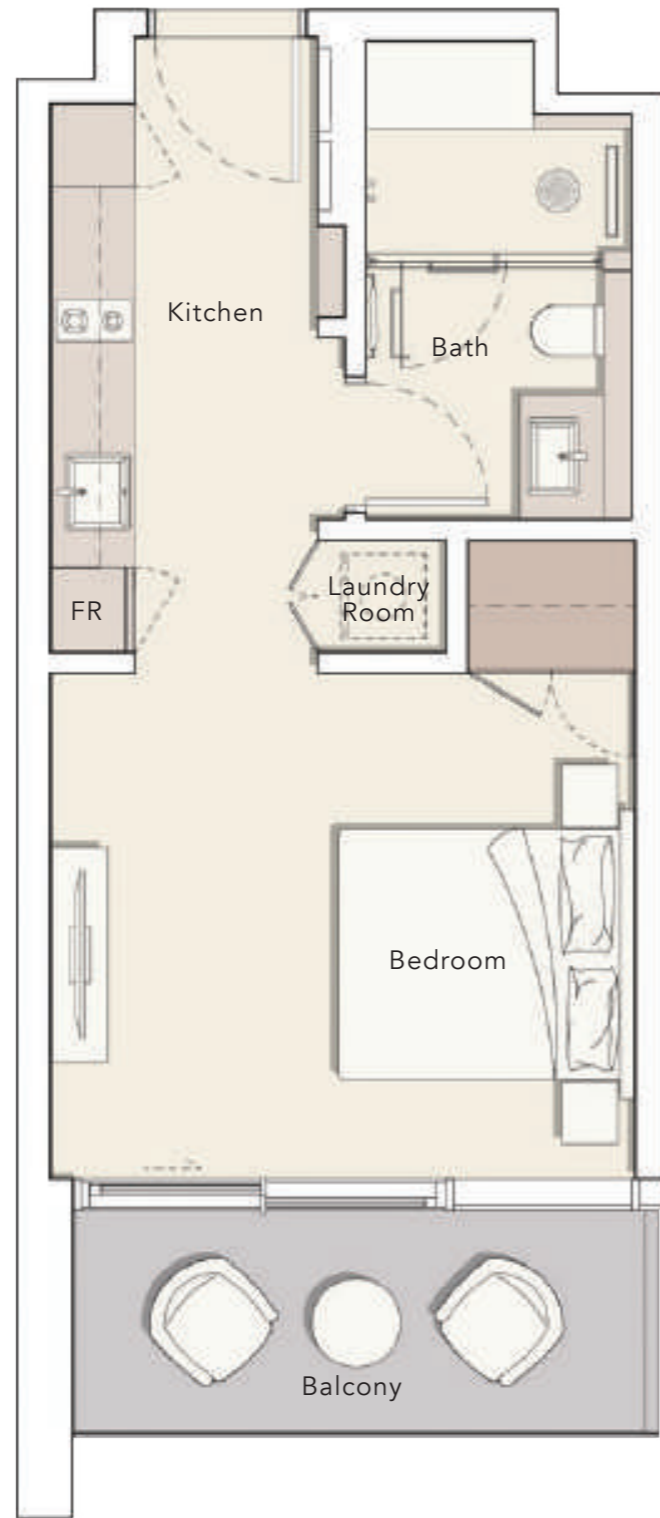
Fresh and functional, with warm finishes and intricately applied detailing set the scene for self-care and relaxing cleansing rituals. While, behind the scenes, subtle ambient lighting, ample hidden storage, and a generous rain shower allow for seamless daily routines.



FLOOR PLANS

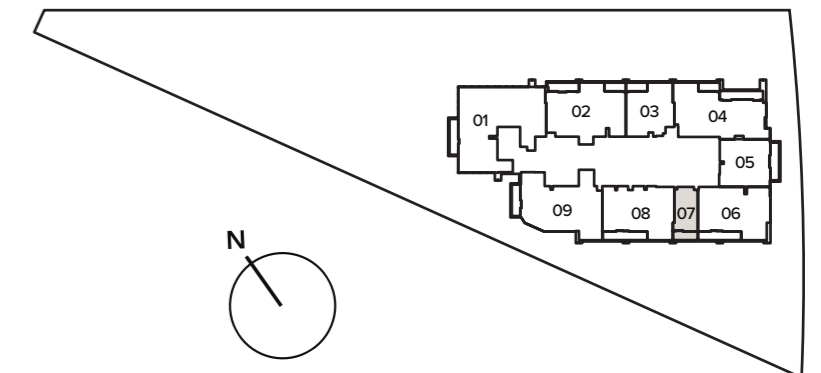
STUDIO

TYPE A



Internal Living Area : **401.06 Sq. Ft**
Outdoor Living Area : **86.43 Sq. Ft**
Total Living Area : **487.50 Sq. Ft**

18th - 36th FLOOR



1 BEDROOM

TYPE A

Internal Living Area : 886.41 Sq. Ft
Outdoor Living Area : 71.69 Sq. Ft
Total Living Area : 958.10 Sq. Ft



3rd FLOOR

301

7th FLOOR

701

4th FLOOR

401

8th - 16th FLOOR

803

5th FLOOR

501

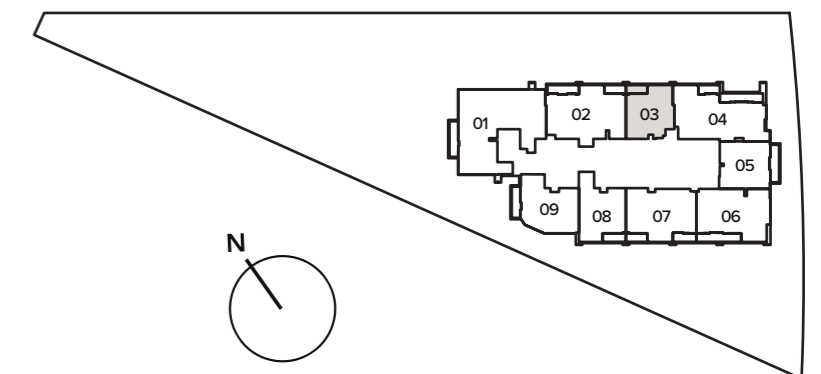
18th - 36th FLOOR

1803

6th FLOOR

601

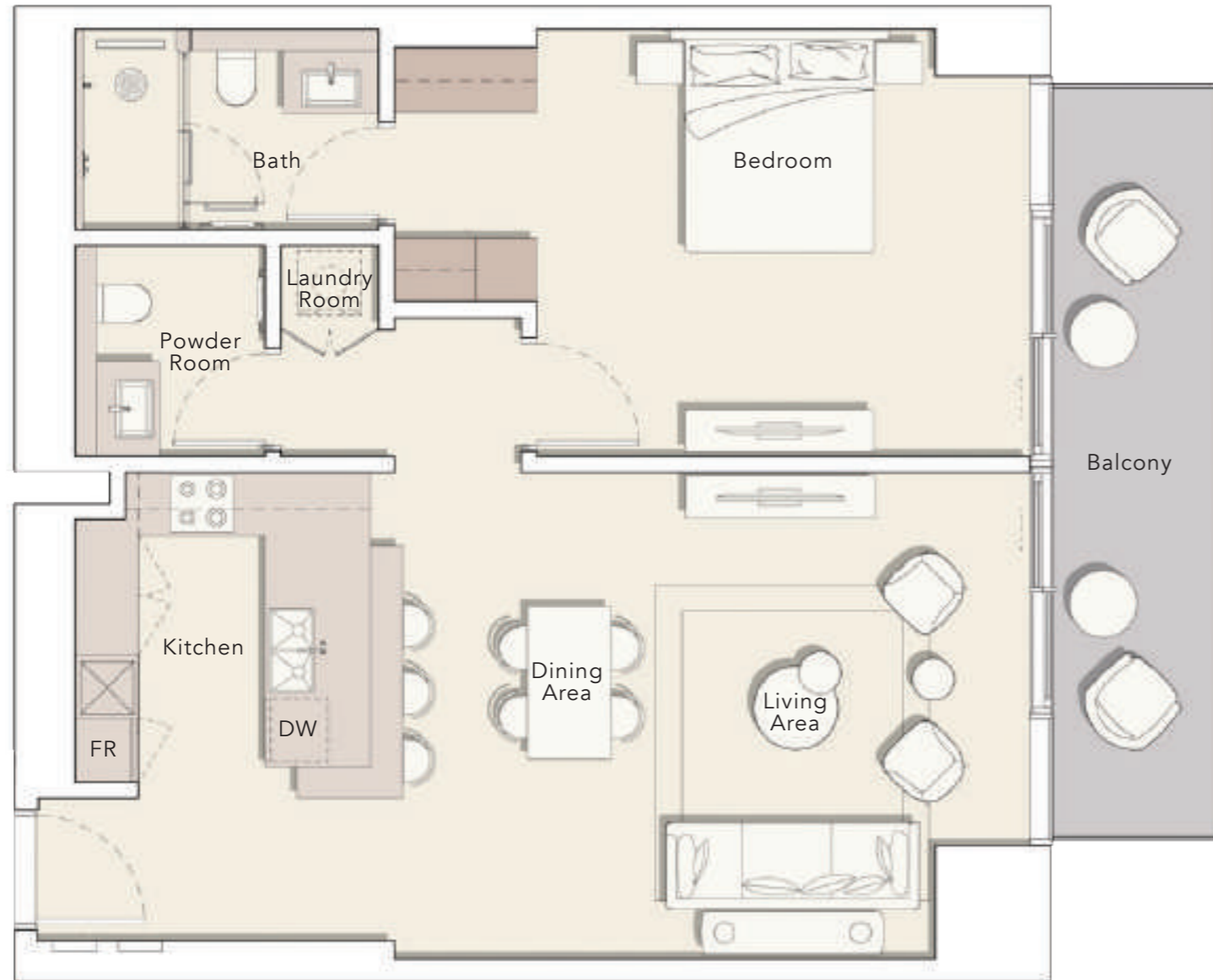
8th - 16th FLOOR



1 B E D R O O M

T Y P E B

Internal Living Area : 930.43 Sq. Ft
Outdoor Living Area : 129.81 Sq. Ft
Total Living Area : 1060.25 Sq. Ft



3rd FLOOR

303

7th FLOOR

703

4th FLOOR

403

8th - 16th FLOOR

805

5th FLOOR

503

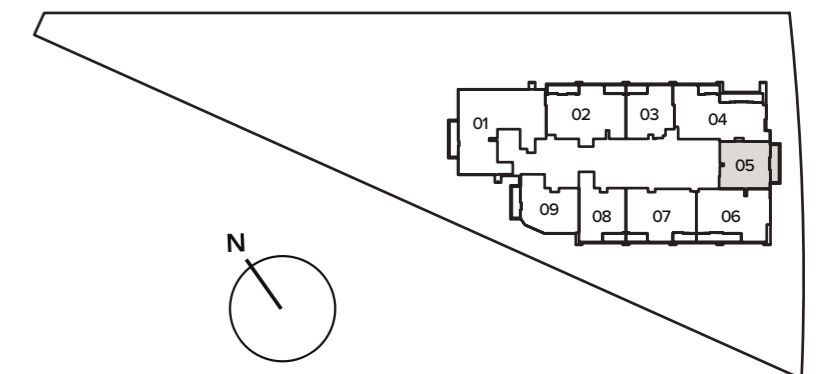
18th - 36th FLOOR

1805

6th FLOOR

603

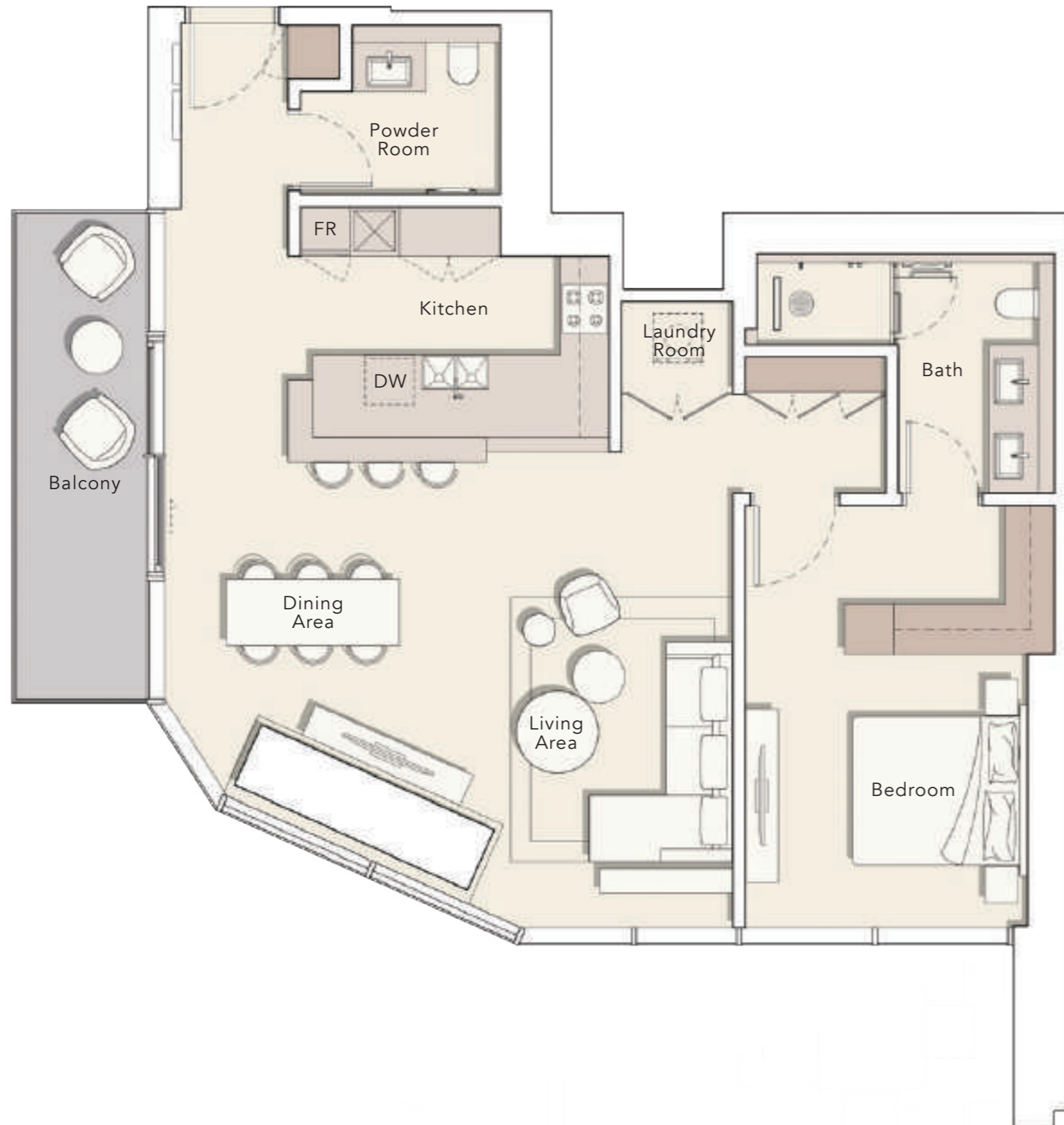
8th - 16th FLOOR



1 BEDROOM

TYPE C

Internal Living Area : 1090.49 Sq. Ft
Outdoor Living Area : 107.10 Sq. Ft
Total Living Area : 1197.59 Sq. Ft



3rd FLOOR

307

7th FLOOR

707

4th FLOOR

407

8th - 16th FLOOR

809

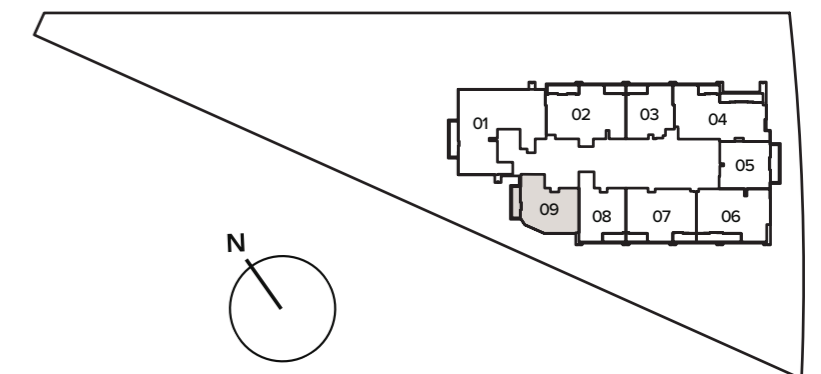
5th FLOOR

507

6th FLOOR

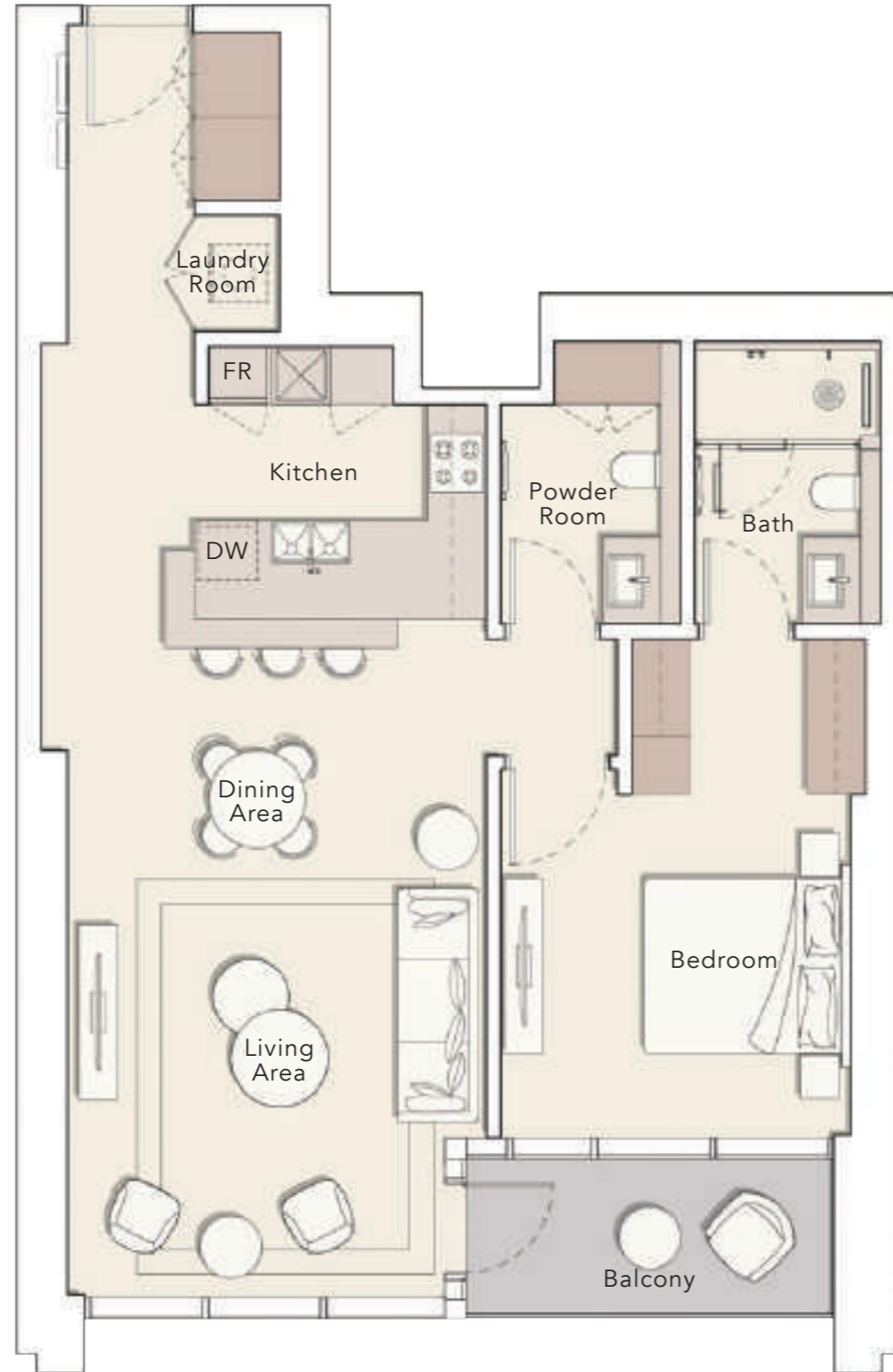
607

8th - 16th FLOOR



1 B E D R O O M

T Y P E D



Internal Living Area : 991.03 Sq. Ft
Outdoor Living Area : 77.82 Sq. Ft
Total Living Area : 1068.86 Sq. Ft

3rd FLOOR

306

7th FLOOR

706

4th FLOOR

406

8th - 16th FLOOR

808

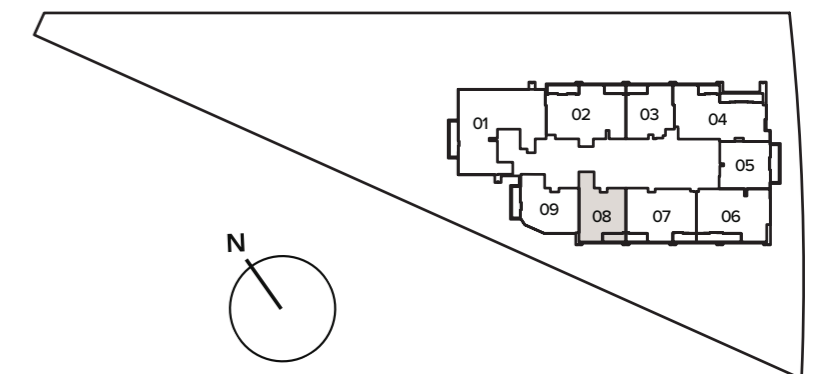
5th FLOOR

506

6th FLOOR

606

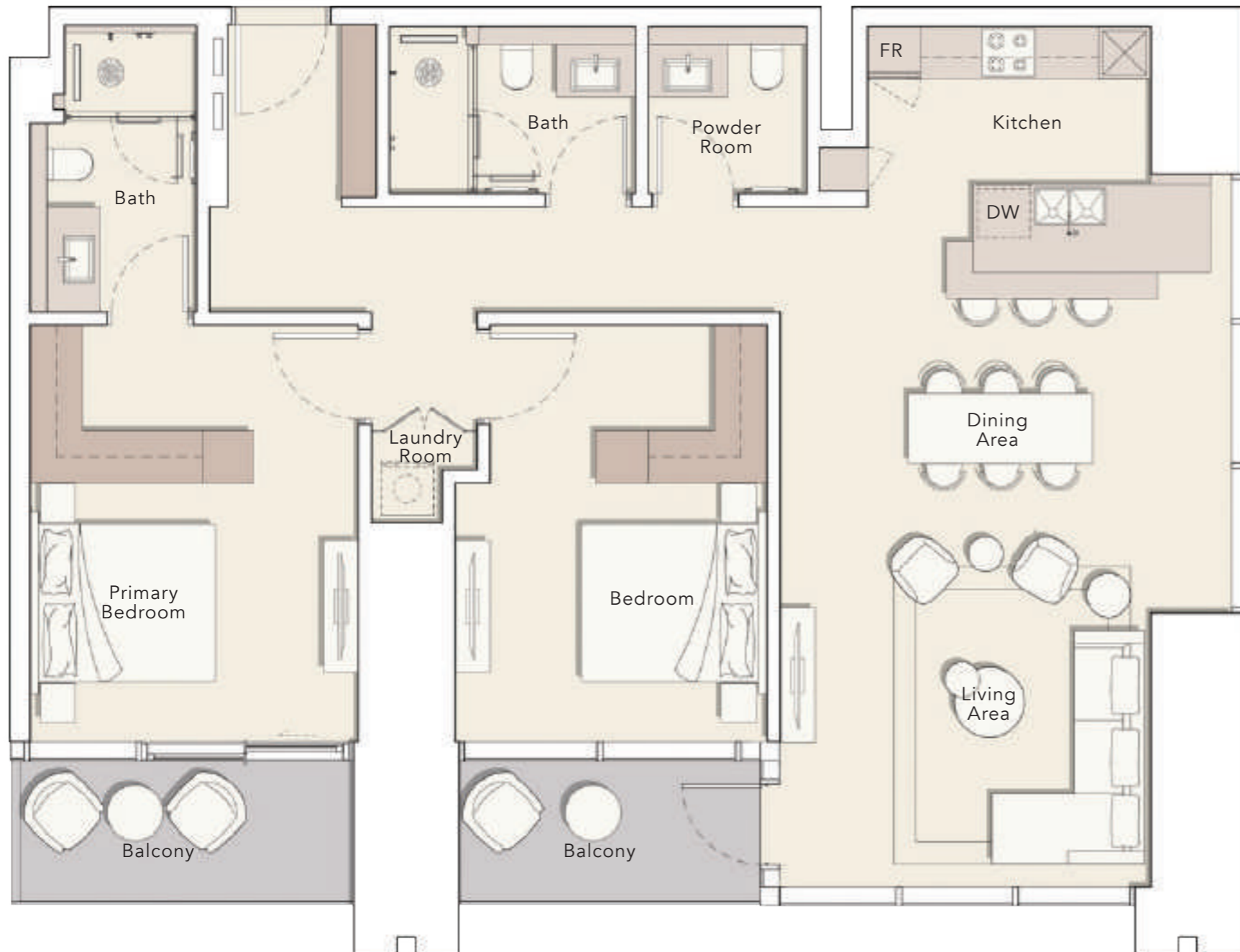
8th - 16th FLOOR



2 BEDROOM

TYPE A

Internal Living Area : 1337.31 Sq. Ft
Outdoor Living Area : 152.63 Sq. Ft
Total Living Area : 1489.94 Sq. Ft



3rd FLOOR

304

7th FLOOR

704

4th FLOOR

404

8th - 16th FLOOR

806

5th FLOOR

504

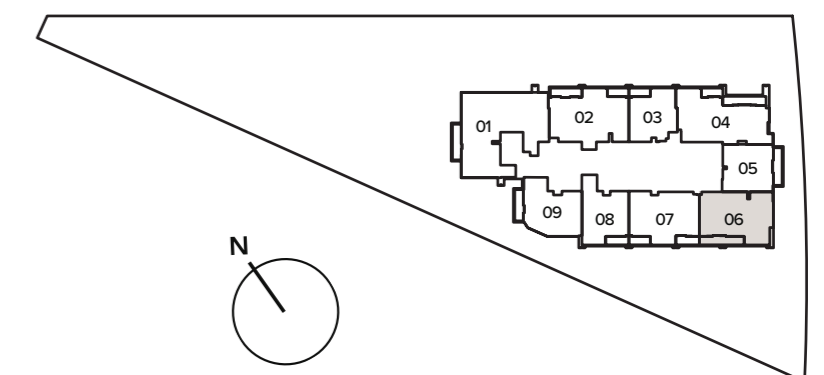
18th - 36th FLOOR

1806

6th FLOOR

604

8th - 16th FLOOR



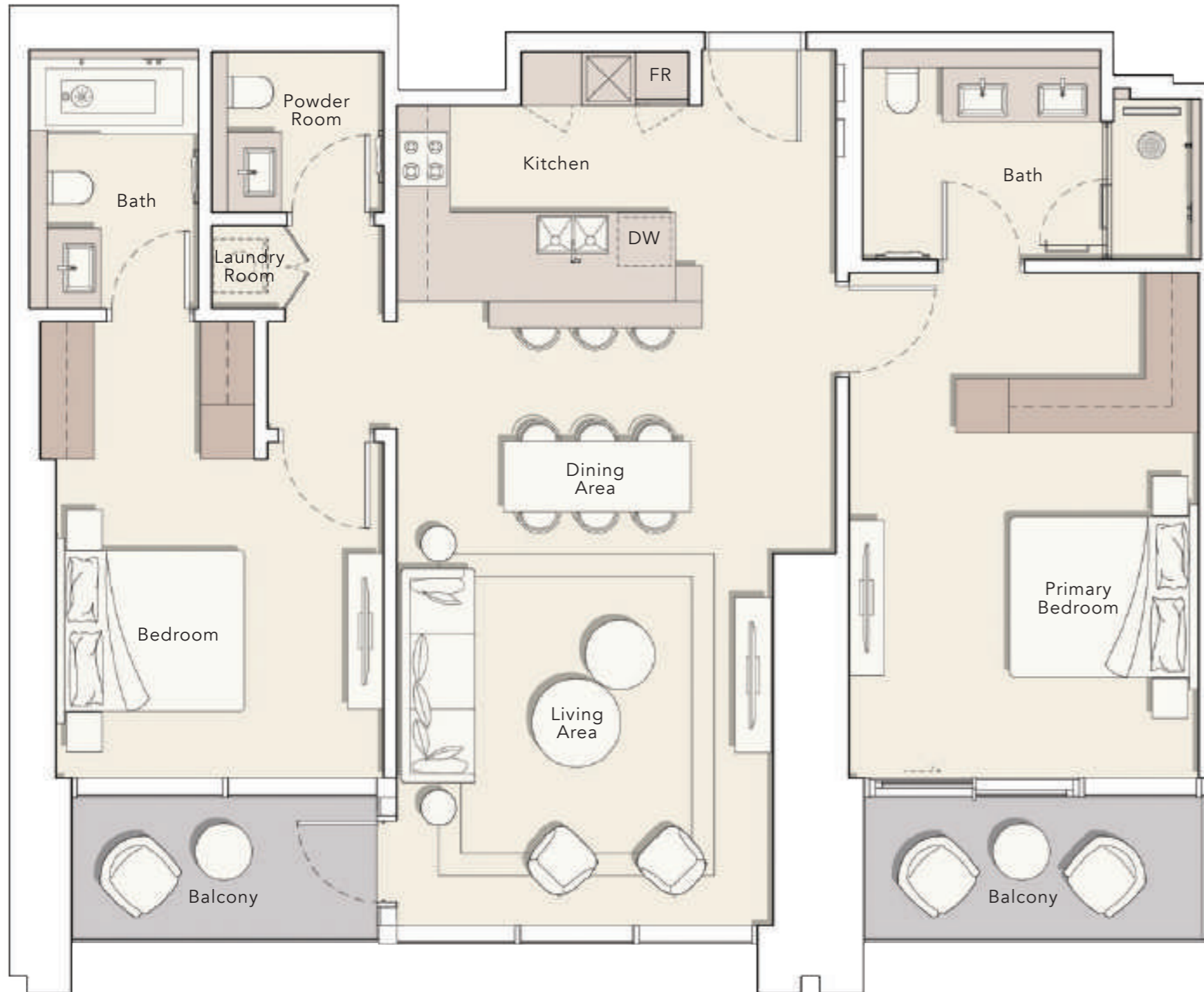
2 BEDROOM

TYPE B

Internal Living Area : 1295.22 Sq. Ft

Outdoor Living Area : 152.63 Sq. Ft

Total Living Area : 1447.85 Sq. Ft



3rd FLOOR

305

7th FLOOR

705

4th FLOOR

405

8th - 16th FLOOR

807

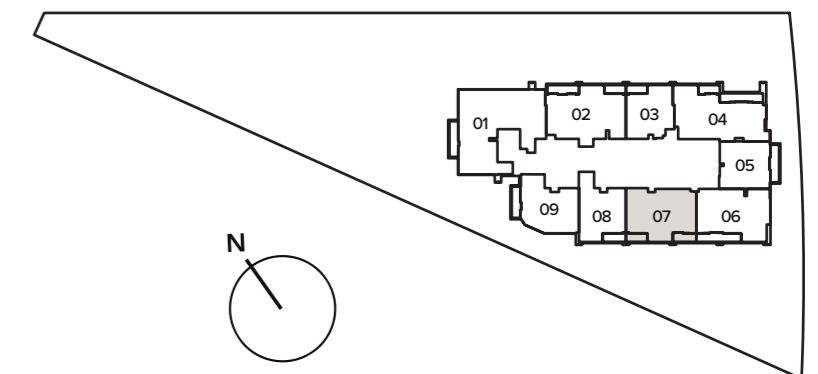
5th FLOOR

505

6th FLOOR

605

8th - 16th FLOOR



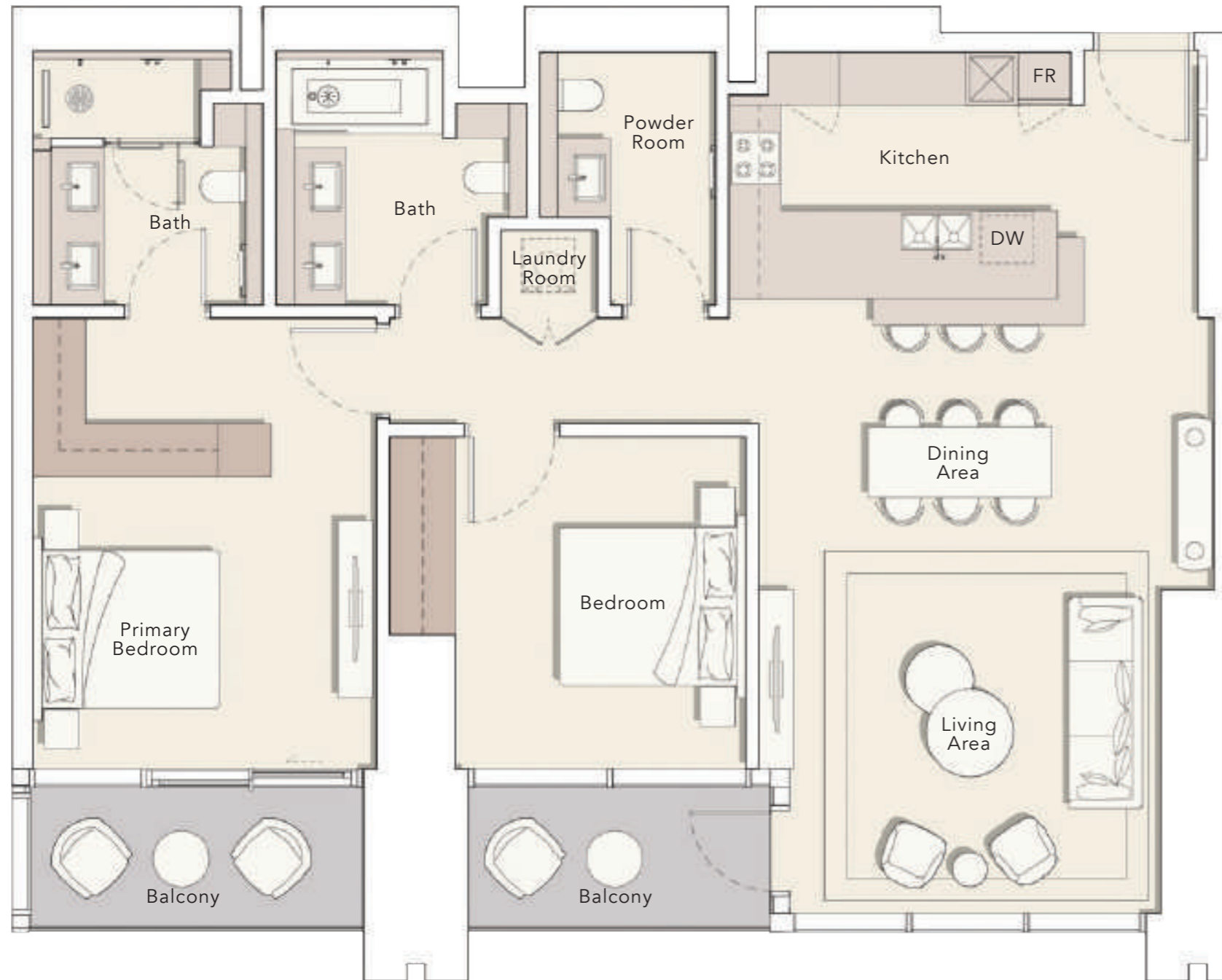
2 BEDROOM

TYPE C

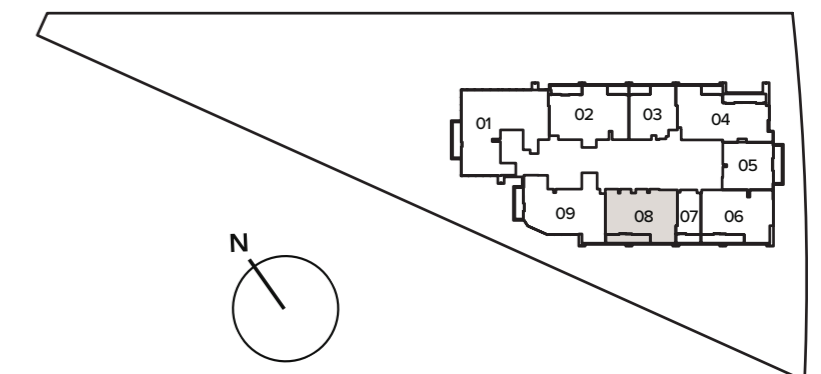
Internal Living Area : 1328.48 Sq. Ft

Outdoor Living Area : 151.77 Sq. Ft

Total Living Area : 1480.25 Sq. Ft



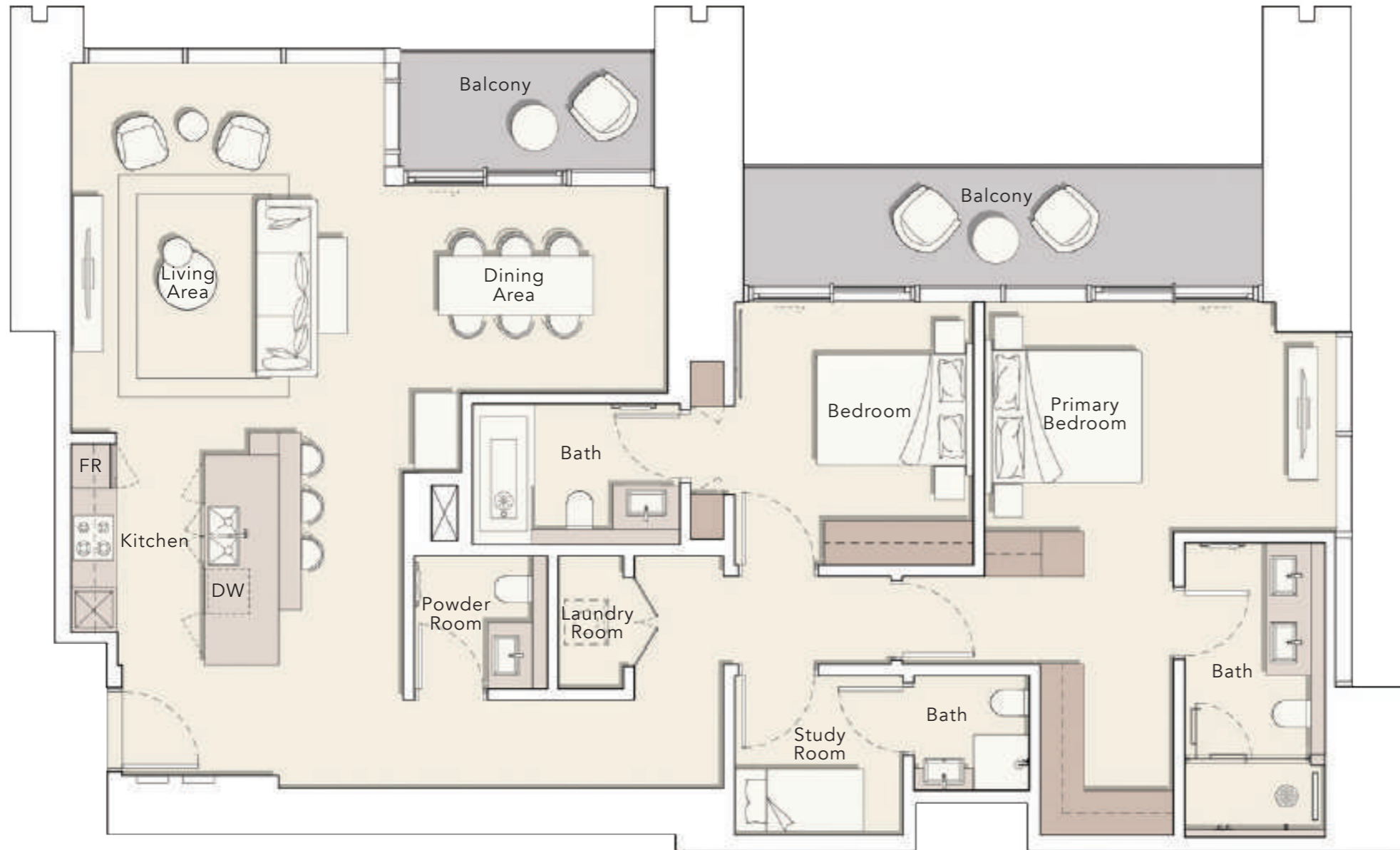
18th - 36th FLOOR



2 BEDROOM + S

TYPE A

Internal Living Area : 1573.04 Sq. Ft
 Outdoor Living Area : 222.92 Sq. Ft
 Total Living Area : 1795.96 Sq. Ft



3rd FLOOR

302

7th FLOOR

702

4th FLOOR

402

8th - 16th FLOOR

804

5th FLOOR

502

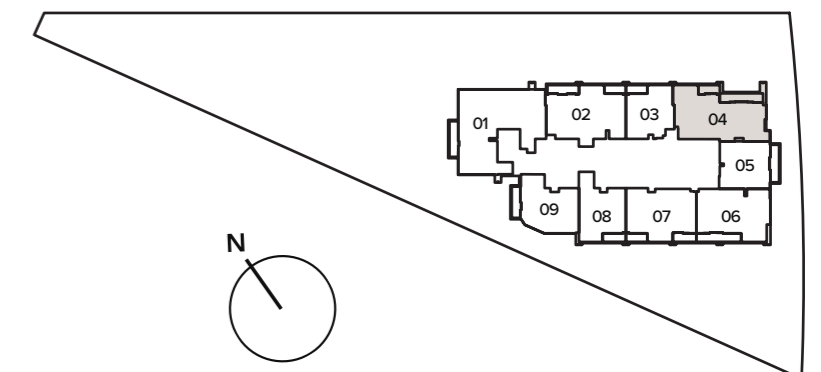
18th - 36th FLOOR

1804

6th FLOOR

602

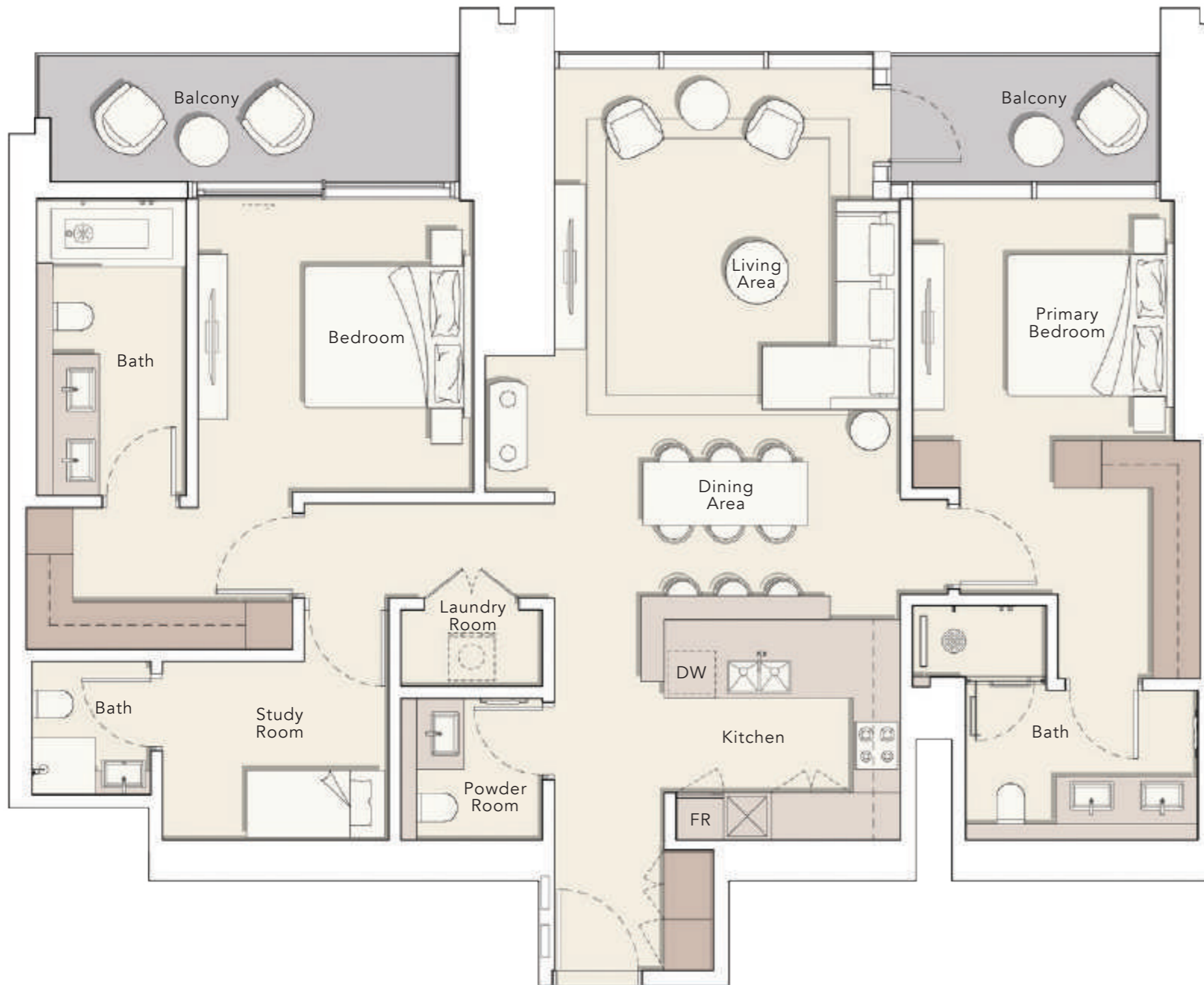
8th - 16th FLOOR



2 BEDROOM + S

TYPE B

Internal Living Area : 1509.53 Sq. Ft
Outdoor Living Area : 178.79 Sq. Ft
Total Living Area : 1688.32 Sq. Ft



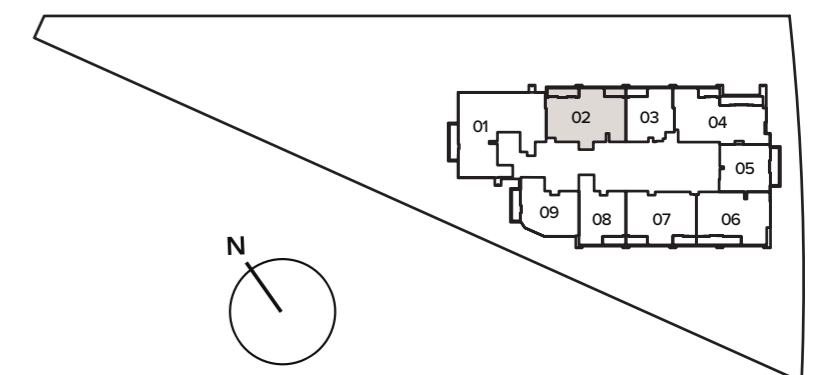
8th - 16th FLOOR

802

18th - 36th FLOOR

1802

8th - 16th FLOOR



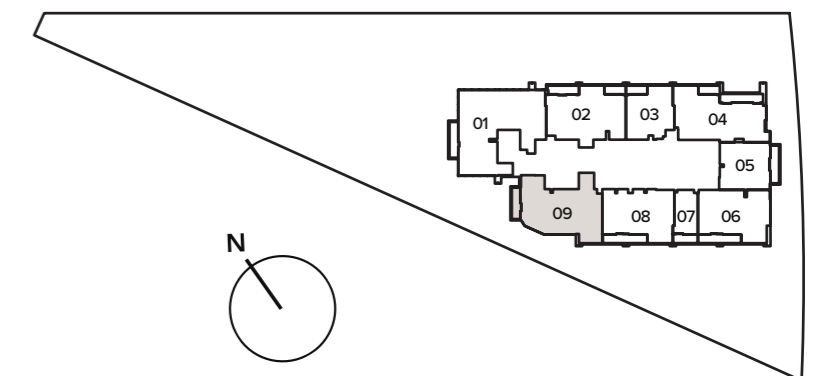
2 BEDROOM + S

TYPE C

Internal Living Area : 1678.20 Sq. Ft
Outdoor Living Area : 107.10 Sq. Ft
Total Living Area : 1785.30 Sq. Ft



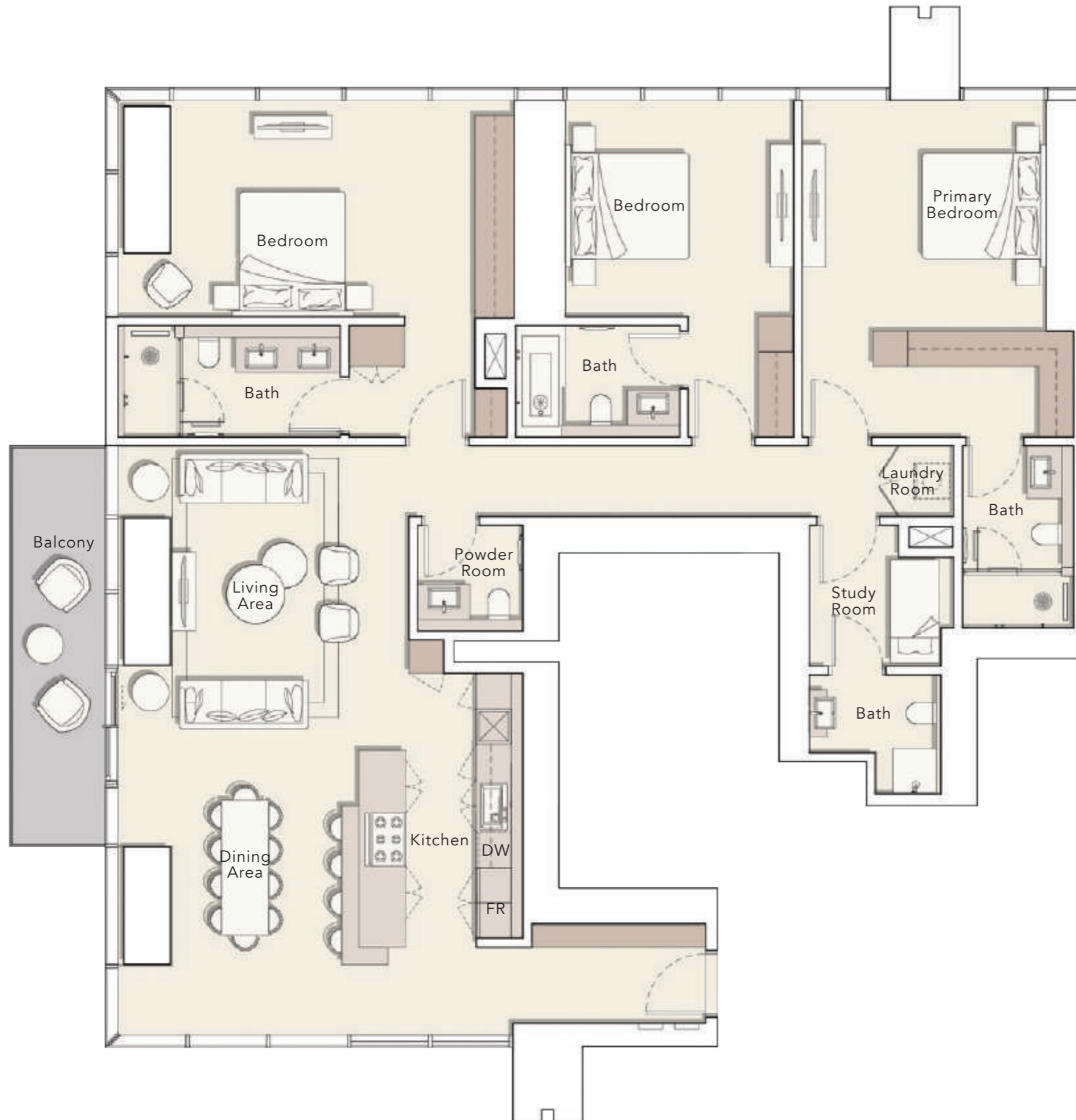
18th - 36th FLOOR



3 BEDROOM

TYPE A

Internal Living Area : 2276.24 Sq. Ft
Outdoor Living Area : 121.09 Sq. Ft
Total Living Area : 2397.34 Sq. Ft



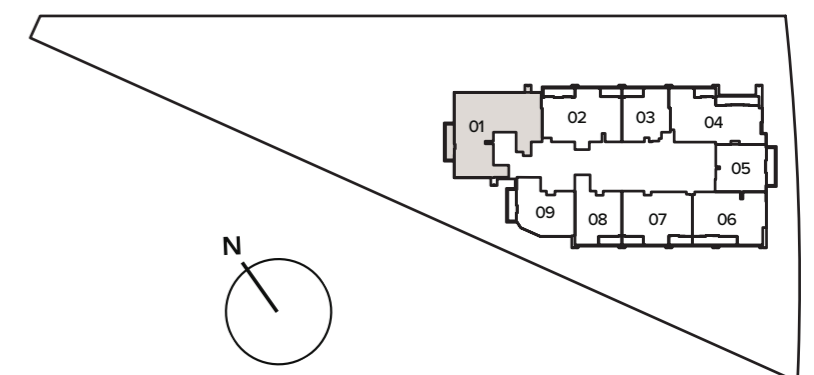
8th - 16th FLOOR

801

18th - 36th FLOOR

1801

8th - 16th FLOOR

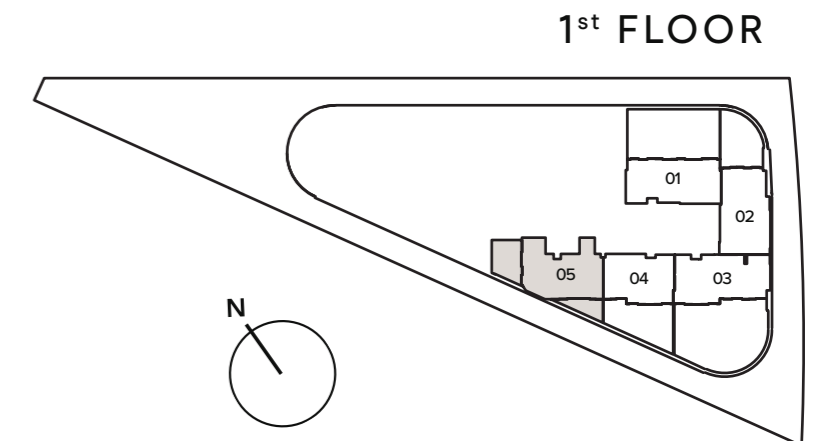
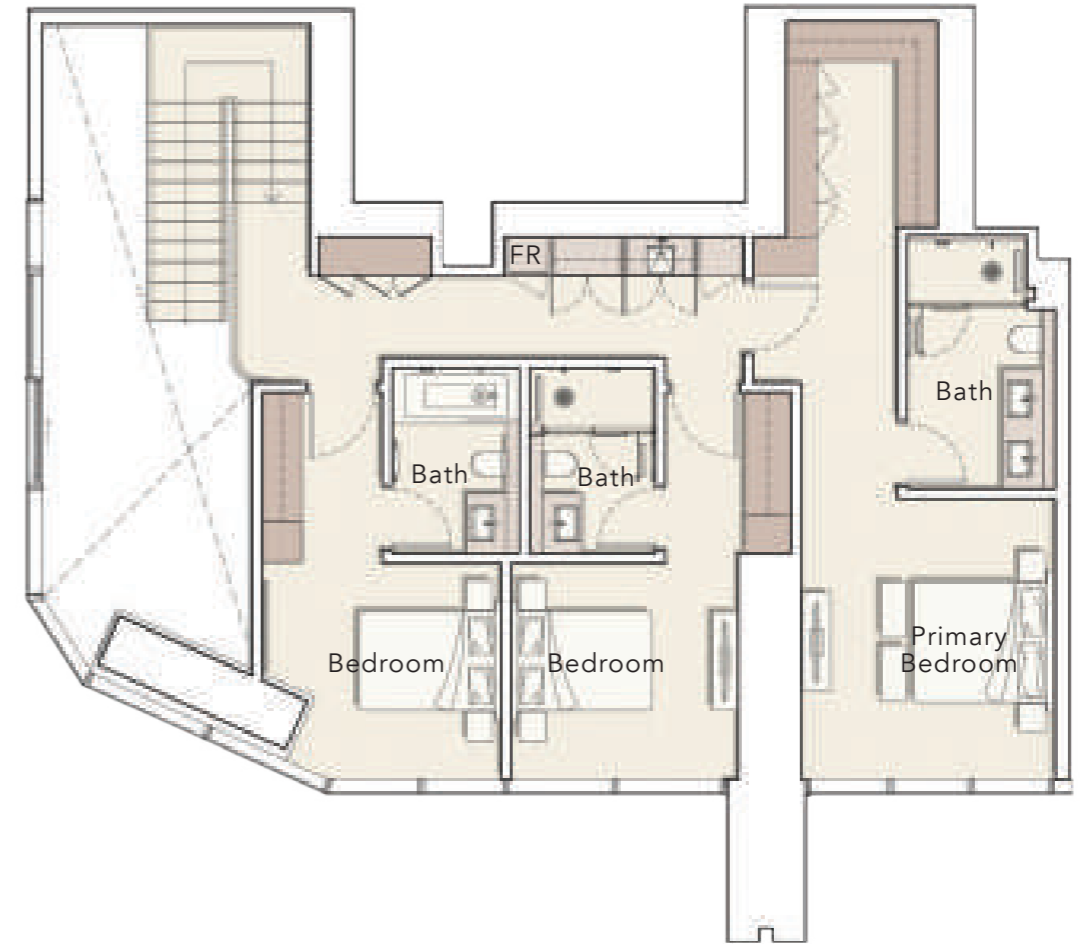
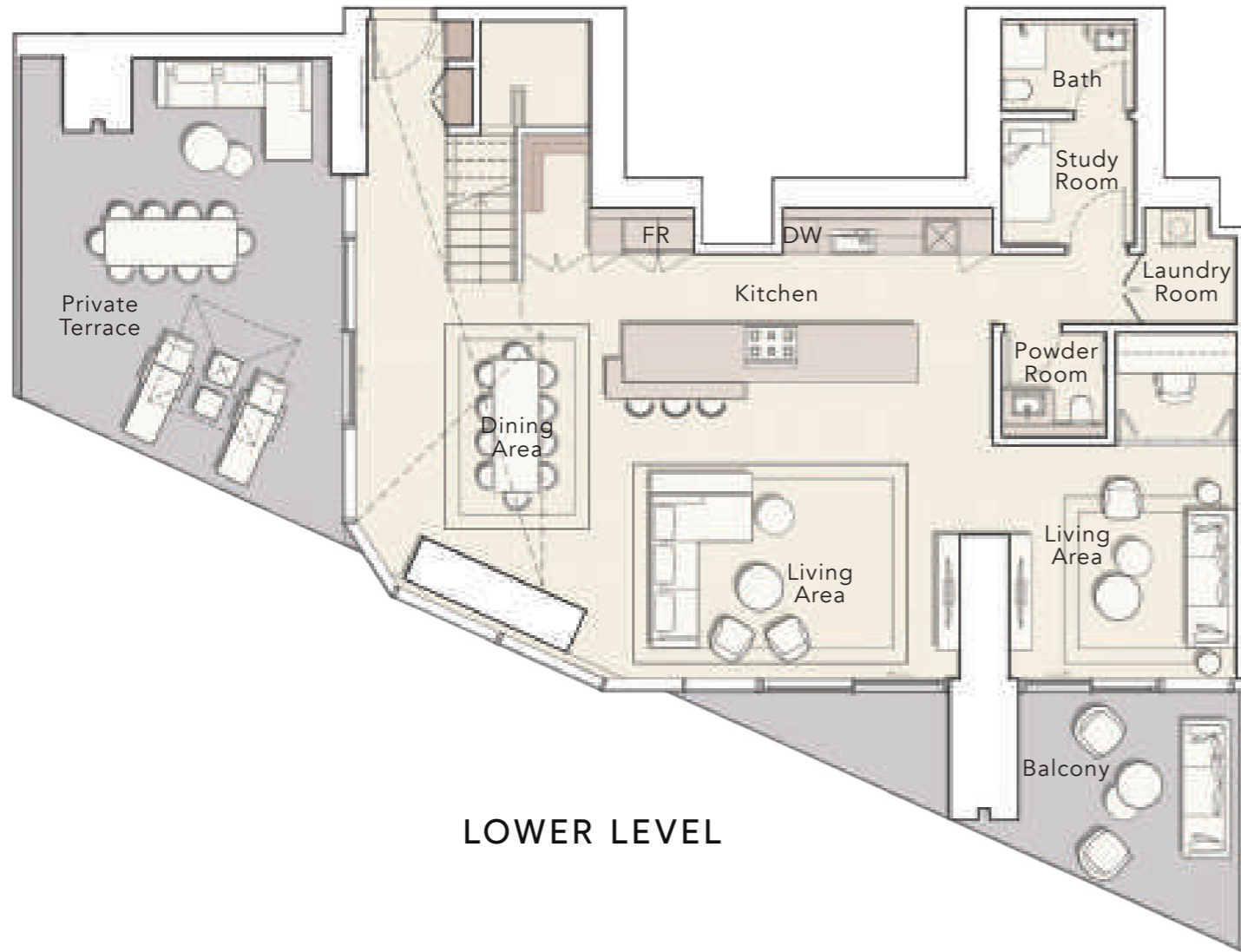


P R E M I U M
A P A R T M E N T S

3 BEDROOM DUPLEX

TYPE A

Internal Living Area : 3007.22 Sq. Ft
Outdoor Living Area : 707.30 Sq. Ft
Total Living Area : 3714.52 Sq. Ft



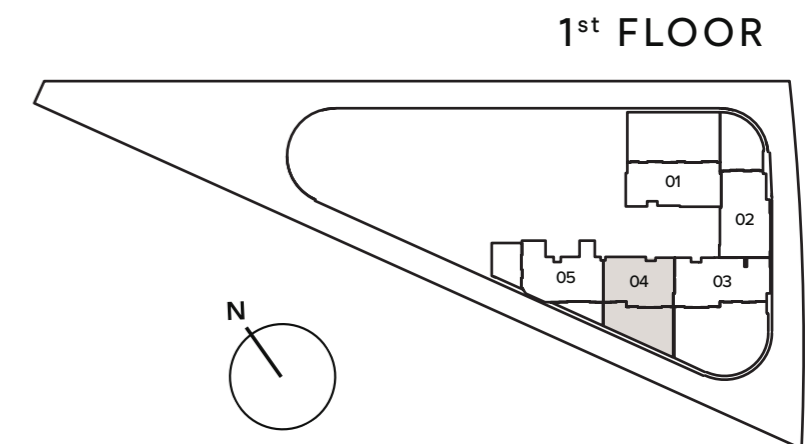
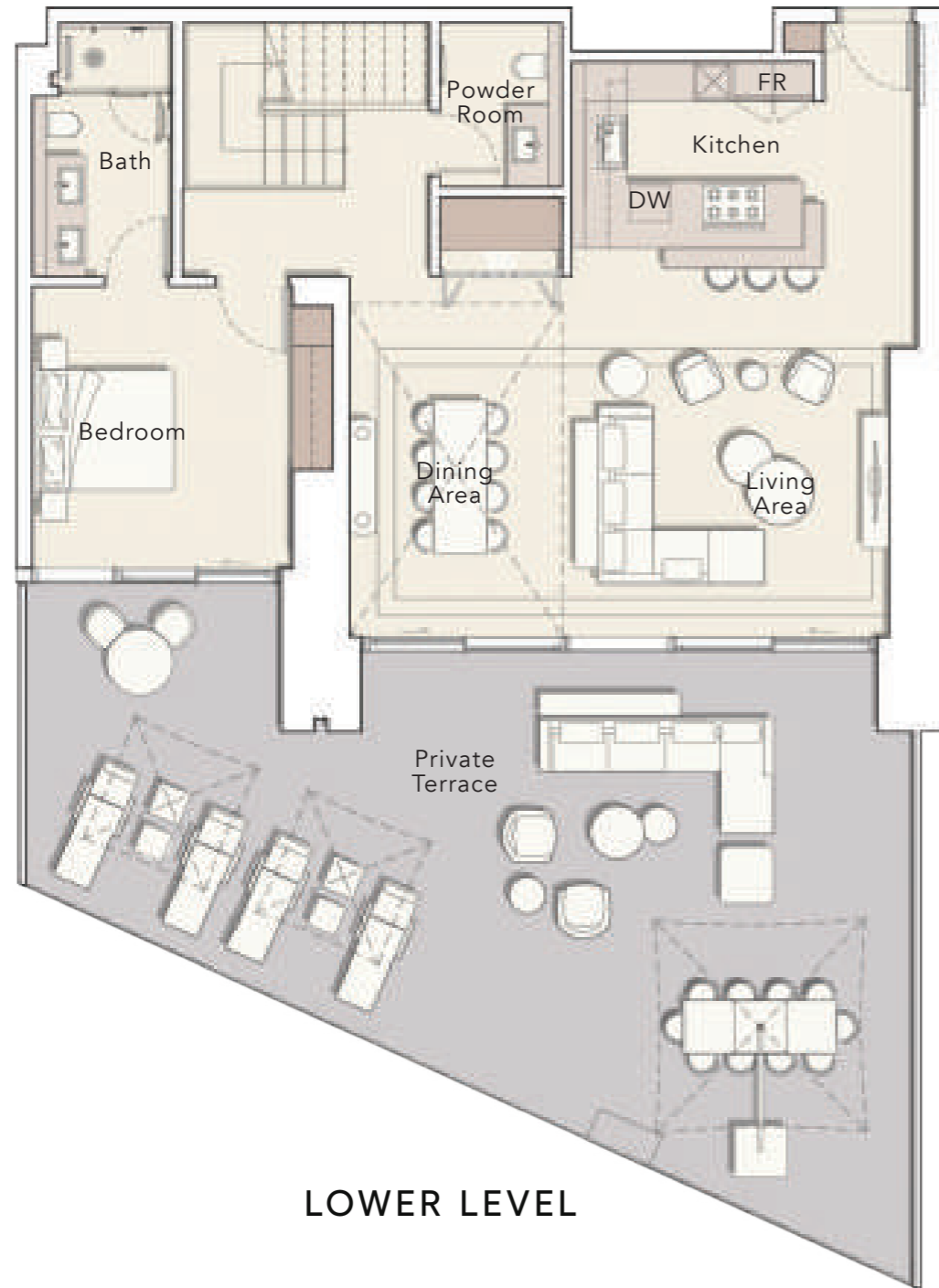
3 BEDROOM DUPLEX

TYPE B

Internal Living Area : 2468.49 Sq. Ft

Outdoor Living Area : 993.62 Sq. Ft

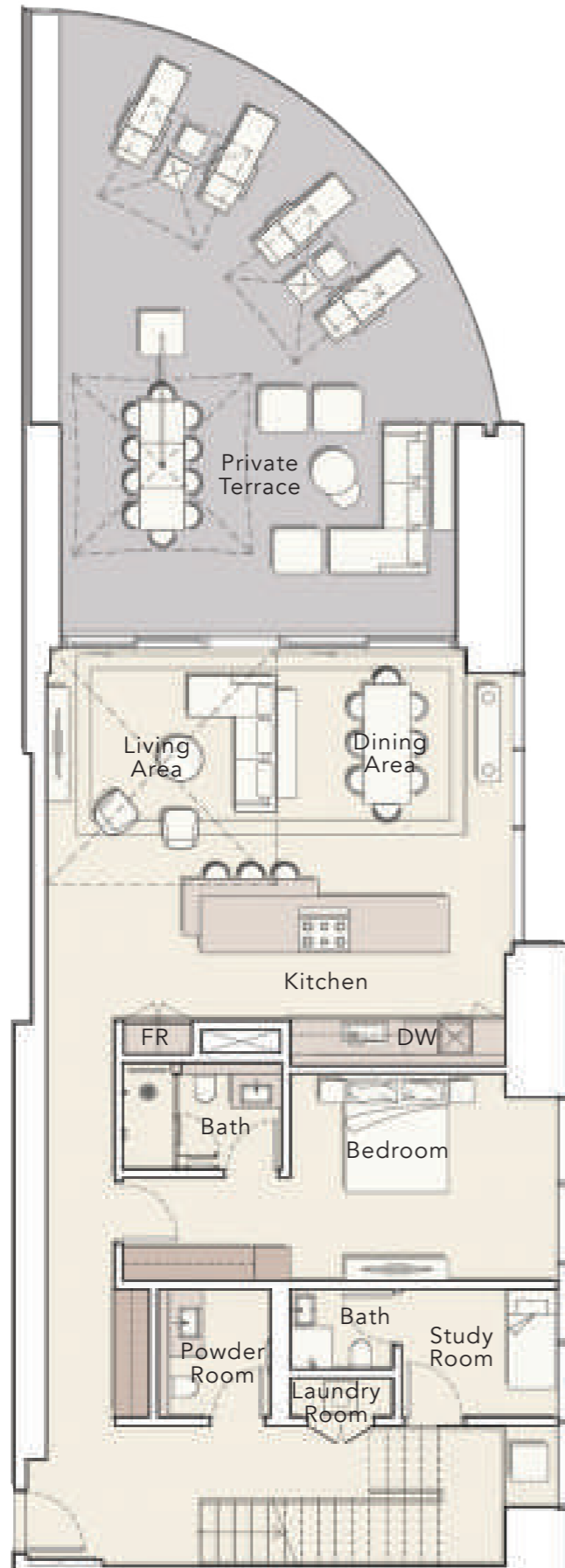
Total Living Area : 3462.10 Sq. Ft



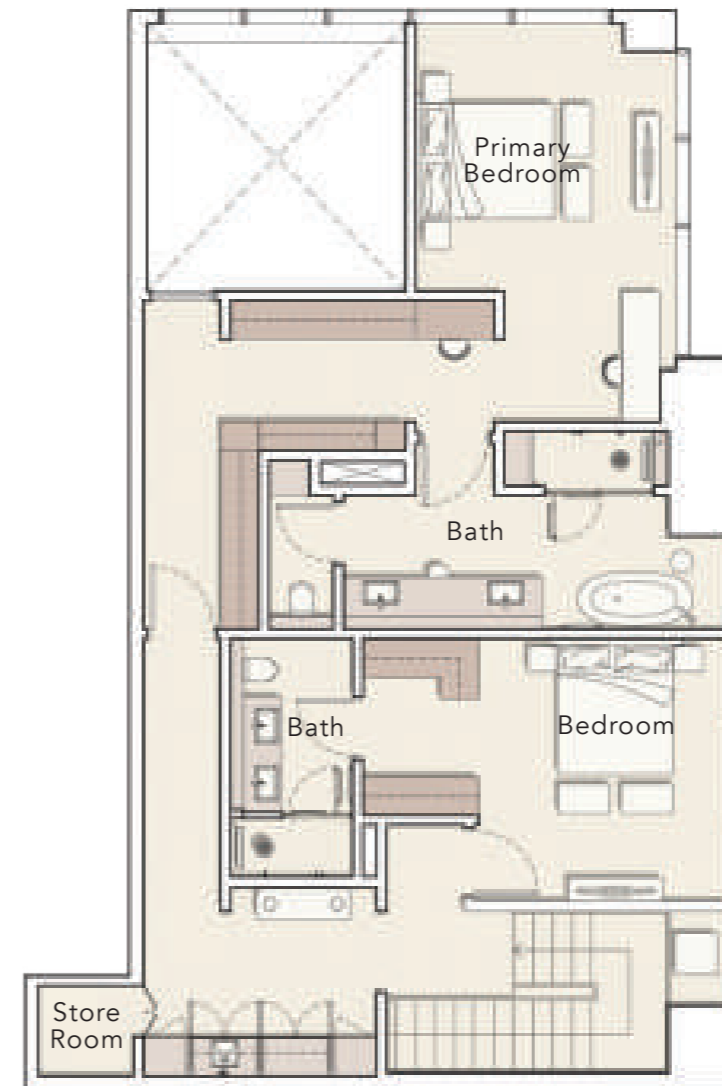
3 BEDROOM DUPLEX

TYPE C

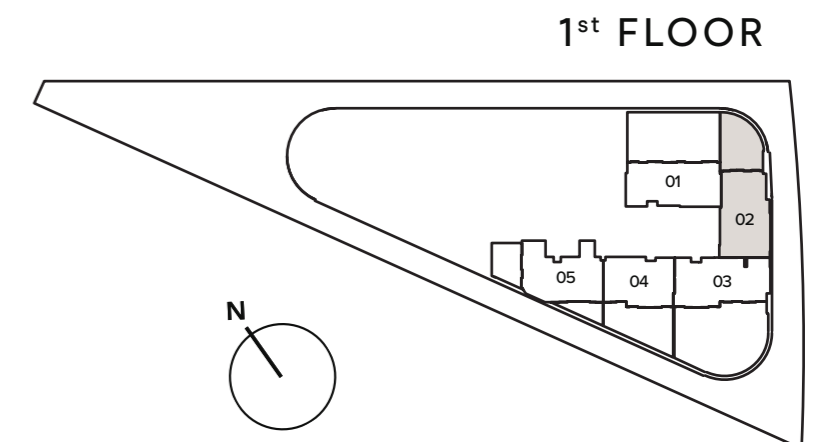
Internal Living Area : 3125.73 Sq. Ft
Outdoor Living Area : 842.92 Sq. Ft
Total Living Area : 3968.65 Sq. Ft



LOWER LEVEL



UPPER LEVEL



1st FLOOR

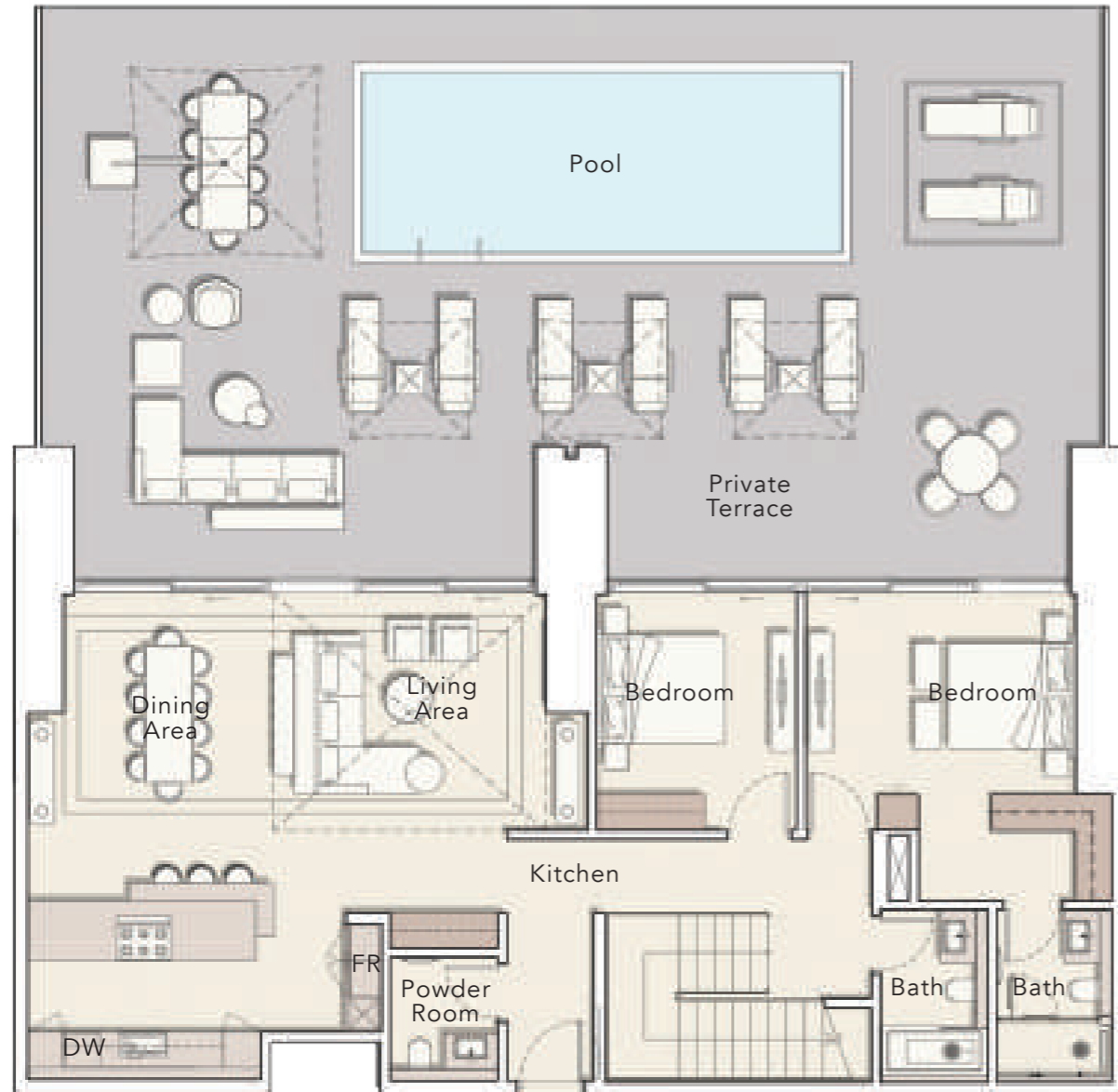
4 BEDROOM DUPLEX

TYPE A

Internal Living Area : 3128.96 Sq. Ft

Outdoor Living Area : 1842.89 Sq. Ft

Total Living Area : 4971.85 Sq. Ft

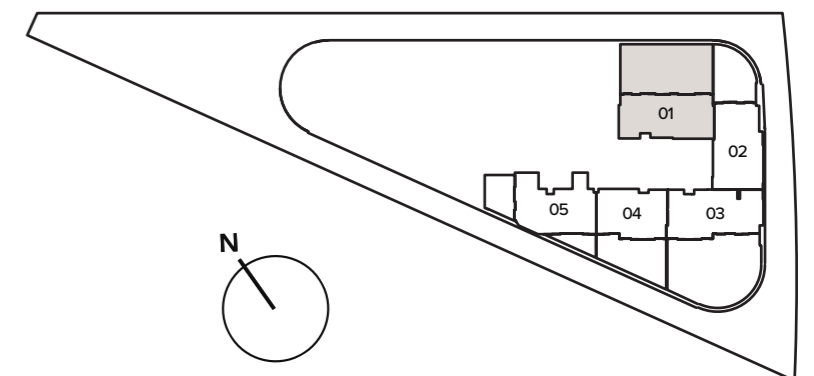


LOWER LEVEL



UPPER LEVEL

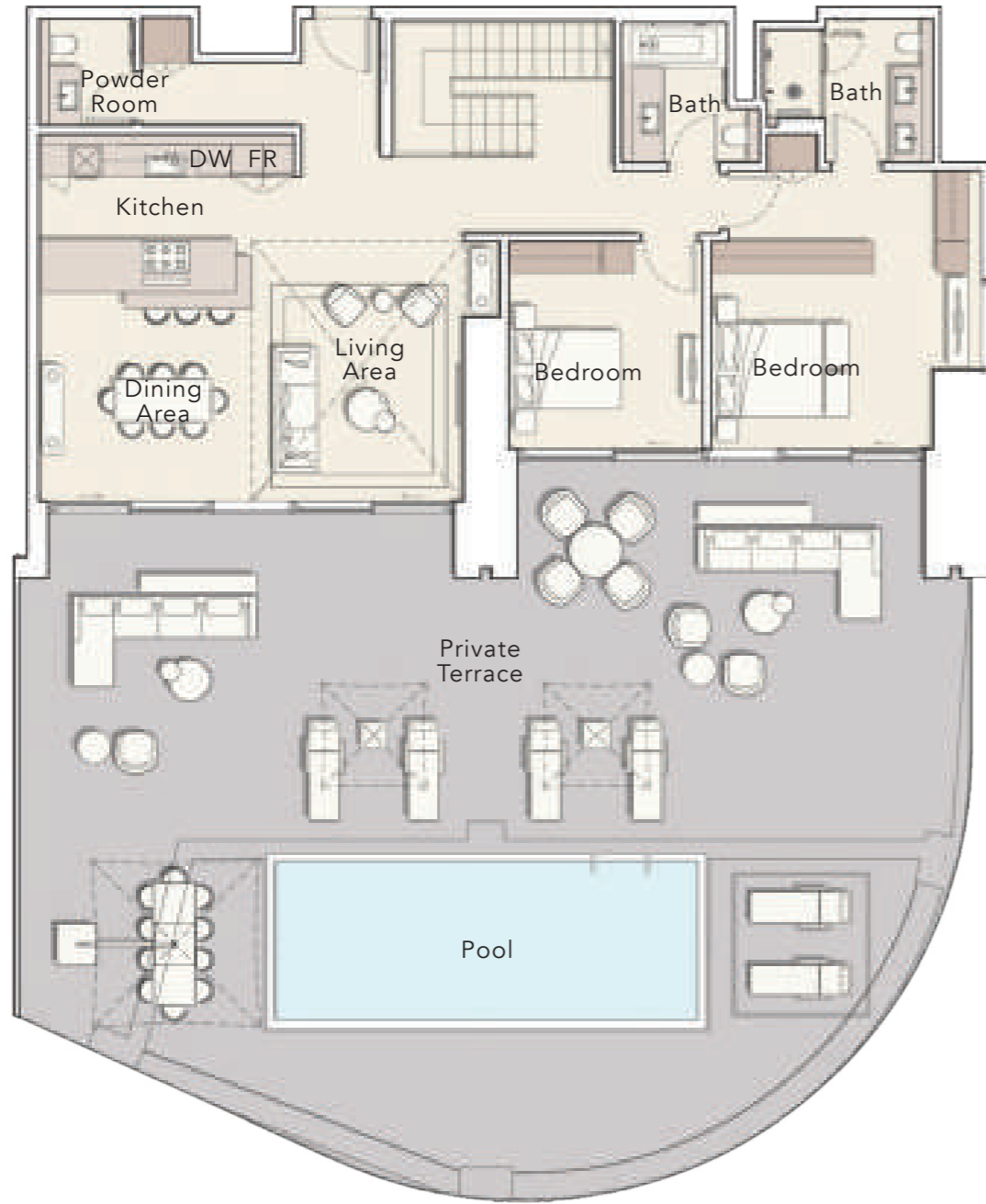
1st FLOOR



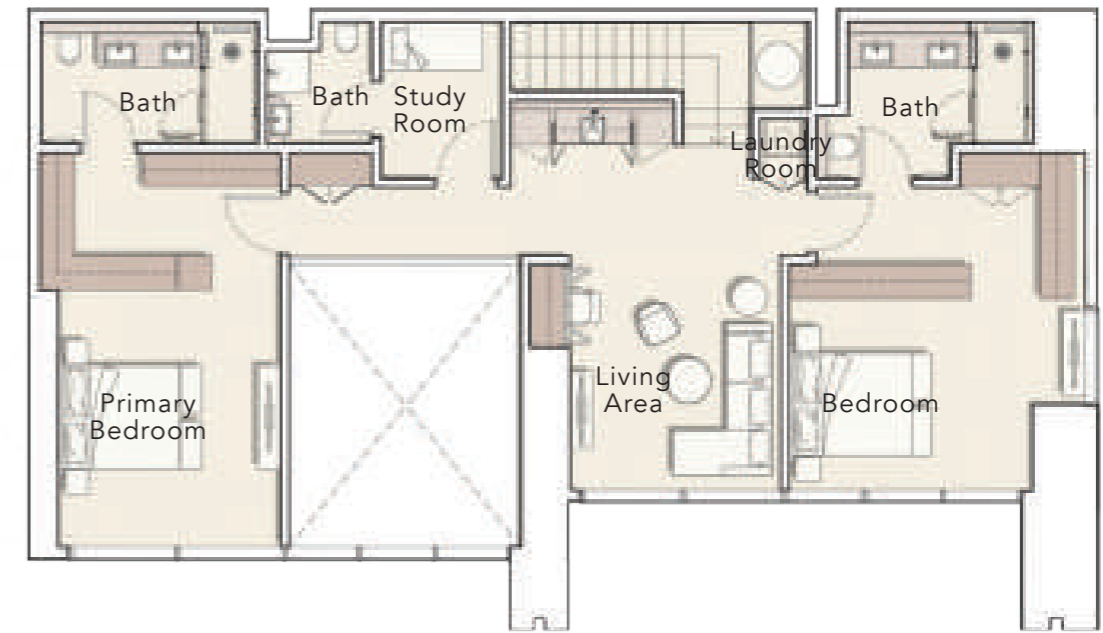
4 BEDROOM DUPLEX

TYPE B

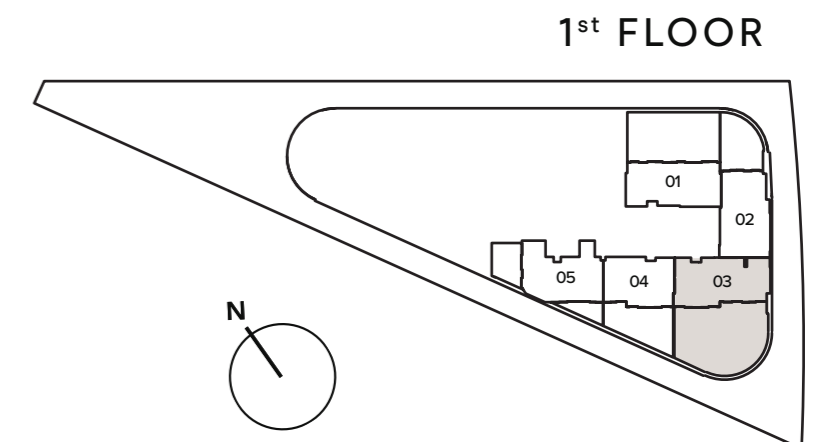
Internal Living Area : 3246.50 Sq. Ft
Outdoor Living Area : 2329.74 Sq. Ft
Total Living Area : 5576.24 Sq. Ft



LOWER LEVEL



UPPER LEVEL



1st FLOOR

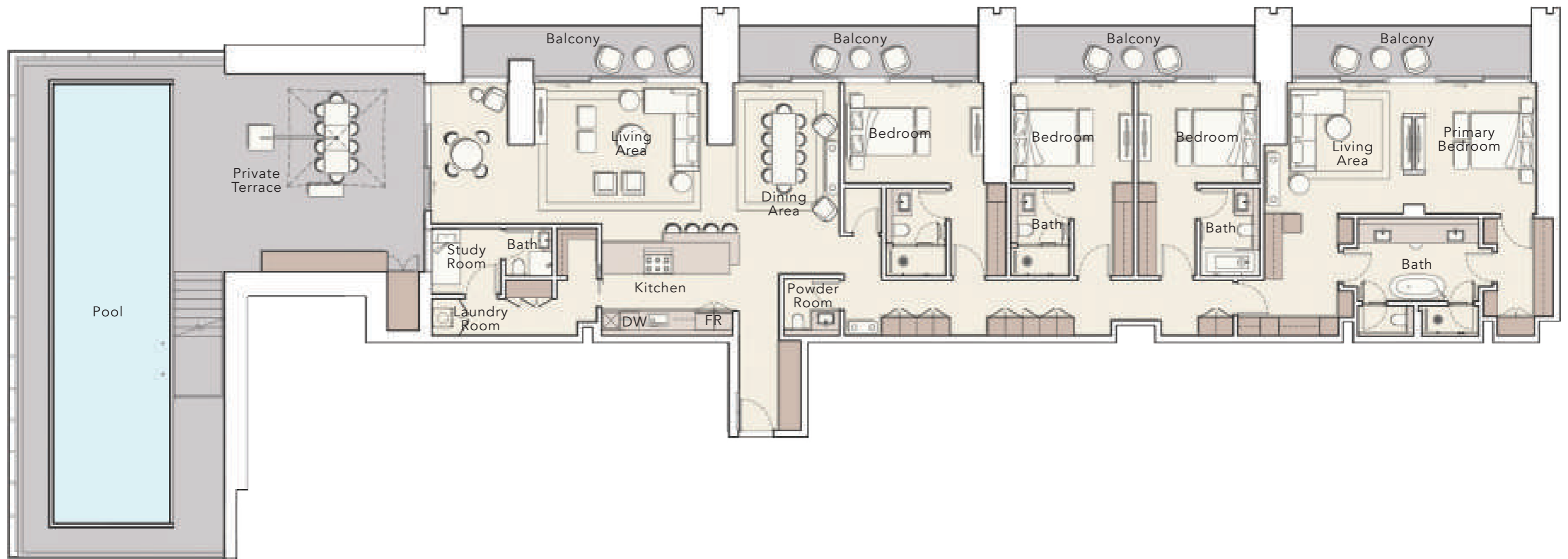
PENTHOUSE

TYPE A

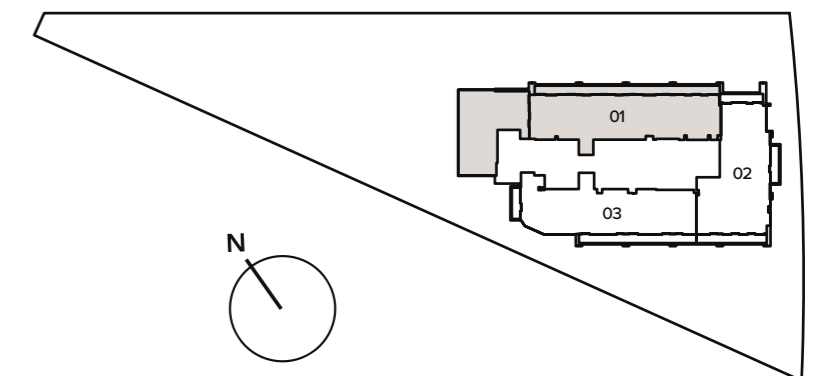
Internal Living Area : **3398.92 Sq. Ft**

Outdoor Living Area : **2448.57 Sq. Ft**

Total Living Area : **5847.49 Sq. Ft**



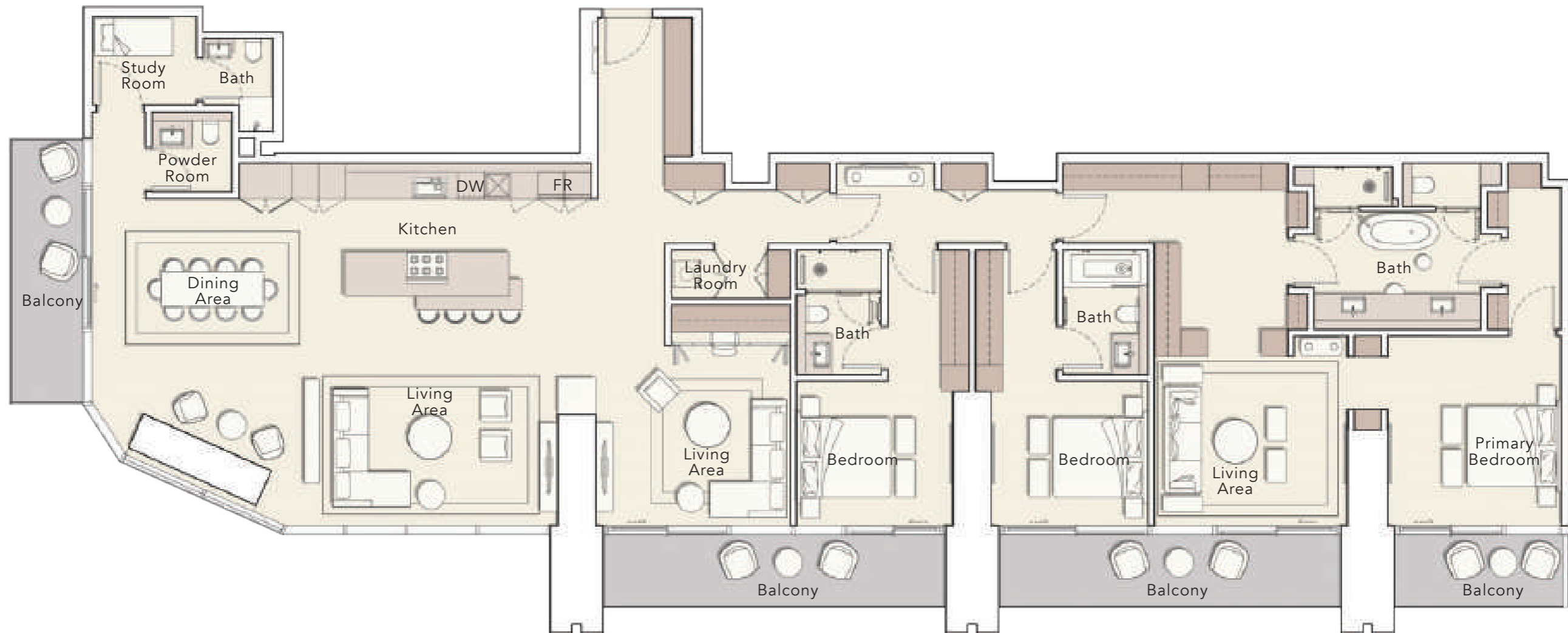
37th FLOOR



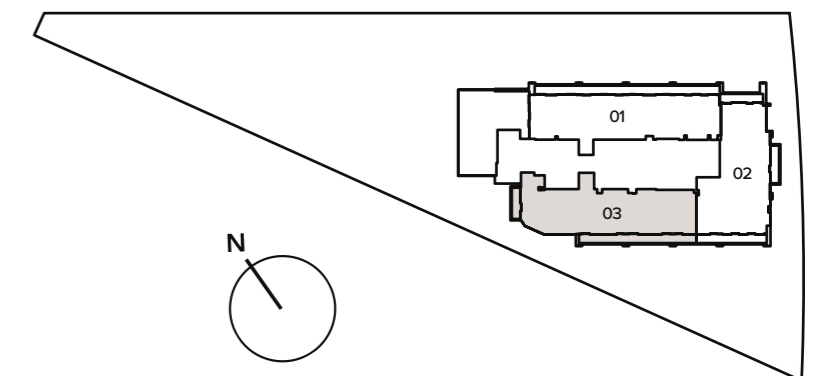
PENTHOUSE

TYPE B

Internal Living Area : 3221.42 Sq. Ft
Outdoor Living Area : 513.22 Sq. Ft
Total Living Area : 3734.65 Sq. Ft



37th FLOOR



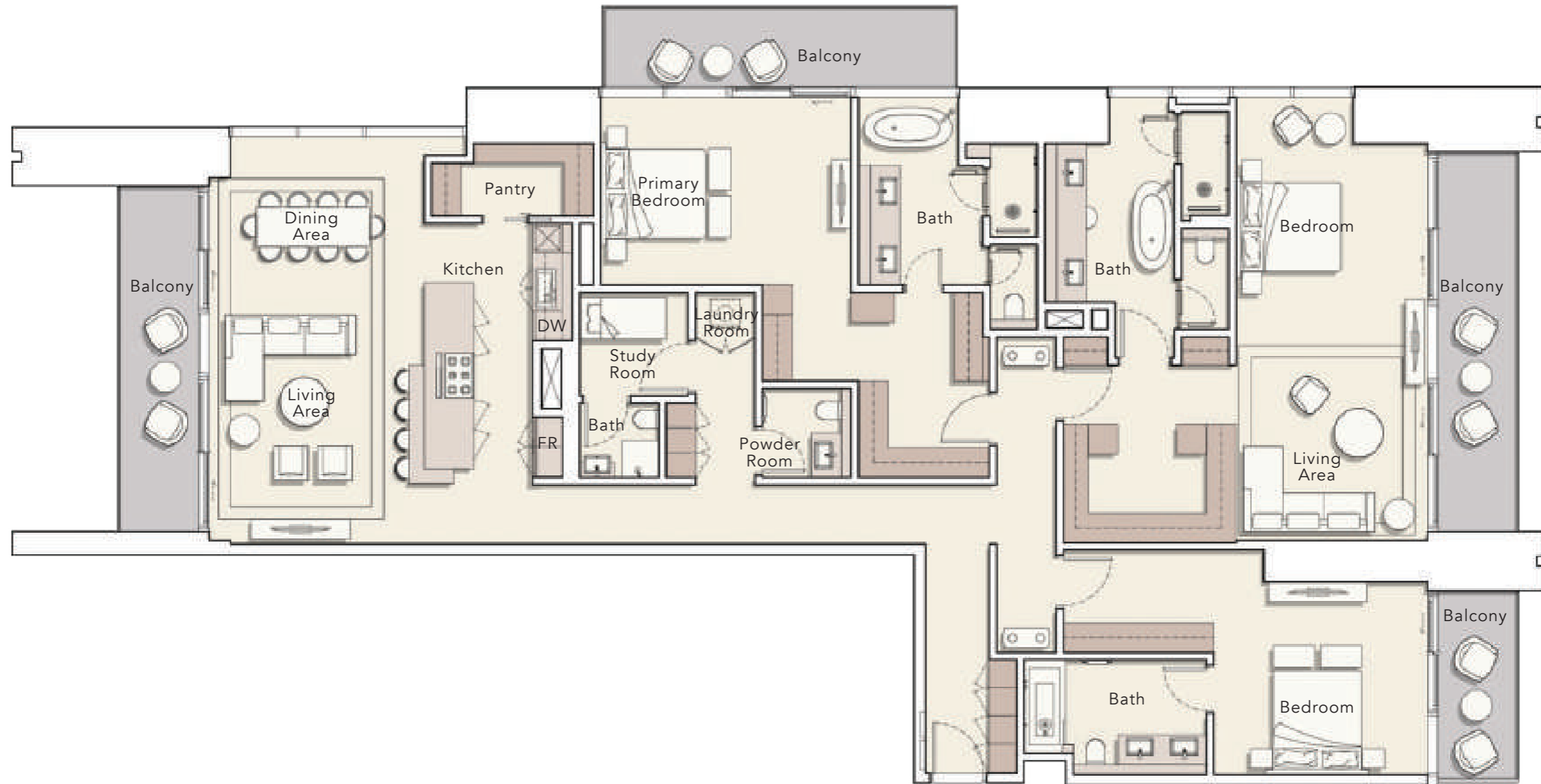
PENTHOUSE

TYPE C

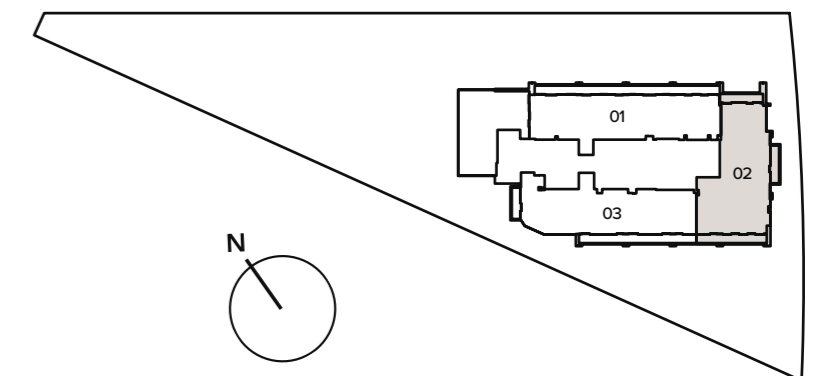
Internal Living Area : 2980.96 Sq. Ft

Outdoor Living Area : 521.83 Sq. Ft

Total Living Area : 3502.79 Sq. Ft



37th FLOOR



 ELLINGTON | **DUTCO**