



 Vipline +66 **(0) 65 521 1999**

Location: Naithon Beach, Sakhu, Thalang District, Phuket  
web: [www.seaheavenphuket.com](http://www.seaheavenphuket.com)





## YOUR PRIVATE PARADISE

At Sea Heaven we have created your exclusive getaway where you can be close to nature and at the same time enjoy luxurious modern life experience.



SEA HEAVEN  
PHUKET NAITHON

HEAVENLY SEAFRONT  
LUXURY LIVING

# GREEN RETREAT

Welcome to the beautiful life, gorgeous ocean views in front of you and majestic mountains behind. Located on a protected nature reserve, enjoy the privacy of hidden beaches, with the convenience of holiday hotels, shops and vacation attractions on your doorstep.





## VACATION PARADISE

Phuket is among the world's finest beach destinations, with the most romantic sunset, fine white sands, nodding palm trees, glittering seas and lively towns. Voted one of the most beautiful places in Asia, the north of the island reveals some hidden gems for travellers searching for a more romantic atmosphere. Phuket Island has been named "Asia's Most Beautiful Town".

Enjoy visiting the fantastic attractions of Thailand's biggest island, you can also take an exhilarating speedboat trip to the many nearby tropical paradises, including the famous Phi Phi Islands, or enjoy a serene cruise around the mystical Phang Nga Bay. Phuket is blessed with more than 30 amazing beaches to choose from.

Surrounded by Sirinath National Park, the only place in the island to see thousands of turtles breeding ashore at zero distance.



# SEMI-PRIVATE BEACH

Thailand's largest island is an international magnet for beach lovers and serious divers, who enthusiastically submerge themselves in the Andaman Sea. Blue lagoons and salmon sunsets make for a dream-like atmosphere, tranquil beach with the span of 1.5km long, and indeed, a vacation here can feel a bit surreal. Watersports are the most popular activities, though once you've had enough sun there's still plenty to explore at the island's aquariums, gardens, and Buddhist temples.



Naiyang Beach



Maikhao Beach



Naithon Beach



Banana Beach

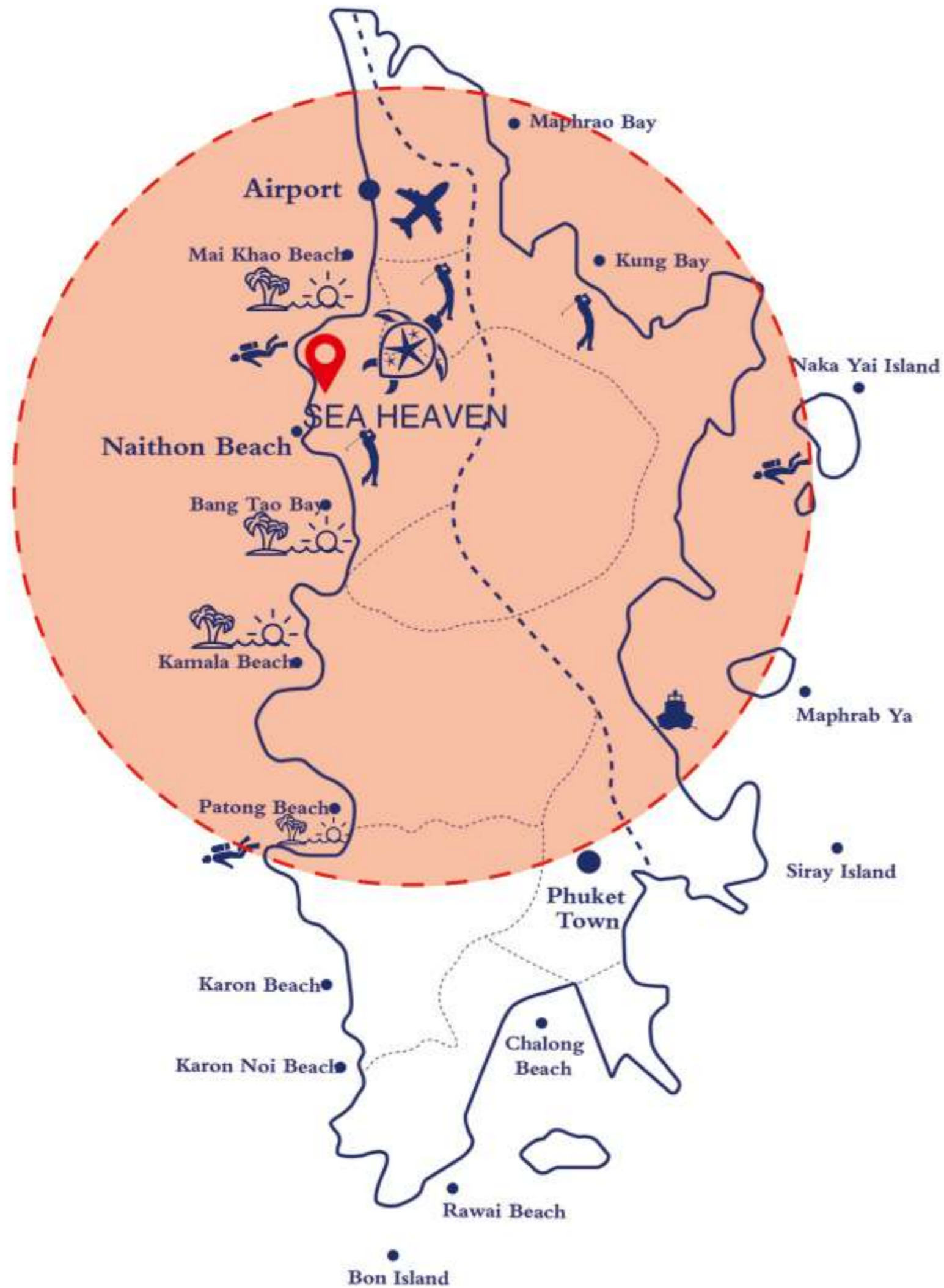


Elephant Jungle



Pullman Phuket Acadia Naithon





Our resort is located in the heart of Phuket's most exclusive neighbourhood, near 5 star hotels and popular vacation activities with natural tranquility as well as only a short shuttle bus ride from Phuket International Airport.





# VACATION

Find yourself living amidst Thailand's most exclusive, expensive hotels, with all the conveniences and luxuries they offer at your doorstep.



**Pullman Arcadia**  
Naithon Beach



**Trisara**  
Naithon Beach



**Phuket Marriott**  
Naiyang Beach



**Laguna**  
Chermtalay



**Malaiwana villas**  
Naithon Beach



**Andaman White  
Beach Resort**



# Naithon beach's newest landmark

your dreaming holiday service place with a verity of shops, restaurants, club, condos and private pool villas.

# DESIGNED WITH WISDOM

Sea Heaven is designed to be exclusive holiday complex with over 96,000 Sqm. Along with stunning 500 meter of flower shaded street, 6 swimming pools, 23 commercial units, 1 five-star hotel, more than 450 holiday apartments and 15 private pool villas.



SALE GALLERY

PHASE 1  
COMMERCIAL UNIT

PHASE 2.1  
CONDOMINIUM

- GROUND FLOOR
- RESTAURANT
- FITNESS
- SWIMMING POOL

PHASE 2.2  
CONDOMINIUM

- GROUND FLOOR
- RESTAURANT
- FITNESS
- SHOP
- SWIMMING POOL
- POOL BAR
- 4TH FLOOR
- SKY POOL

PHASE 3.2

- GROUND FLOOR
- RESTAURANT
- BAR
- SWIMMING POOL
- 2ND FLOOR
- CONFERENCE HALL
- FITNESS

PHASE 3.1  
CONDOMINIUM

- GROUND FLOOR
- SWIMMING POOL
- POOL BAR
- 8TH FLOOR
- RESTAURANT
- ROOFTOP GARDEN





# UNIQUE FLOWER AVENUE

Enjoy the magnificent scent and sight of colorful blossoms along our 500 meter main street integrates international holiday clubs, shops, holiday markets, five-star hotels, residential resort and private pool villas, fully reflecting the perfect blend of nature and modern lifestyle.



## 3 THEME GARDENS

Creating multiple aesthetic feelings, provide different experiences and meet the needs of different vacation activities.

Thai culture theme, the combination of Thai-style buildings (sport club, SPA center) surrounded with swimming pool and the unique tropical flowers is the best reflection of Thai local culture.



International romantic theme, impressed with our romantic main pool with unique architecture design, surrounding by pool bar, kid area on one side and private infinite pool on the other. A perfect setting to hold a wedding or your next party creating romantic atmosphere.

**Health-care theme,** the natural scenery of mountain and sea for healthier life, surround by yoga and other health-preserving places.





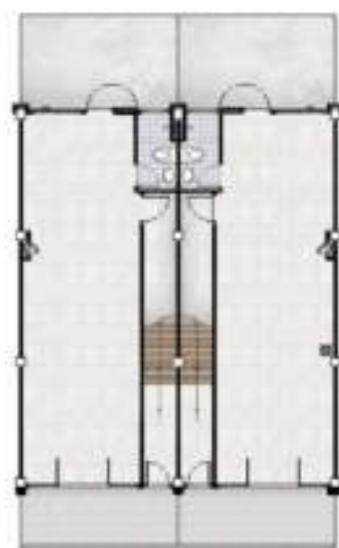
**NATURE AND**  
DESIGN COMBINE FOR MODERN LIVING  
Designed to embed with the philosophy of nature.



# Commerical Unit

## PROJECT DETAIL

Project Name	Sea Heaven Naithon Phuket (PHASE 1)
Deverloper	Bestart Heaven .Ltd
Location	Naithon Beach, Sakhu, Thalang District, Phuket
Detail	COMERCIAL SHOPHOUSE LEASEHOLD 30 YEARS STYLE LUXURY MODERN CONDOMINIUM FOR INVESTMENT
Land Area	3.14 Rai
Buliding	3 Bulidings
Floors	3 Floors
Units	23 Units
Parking	66 Cars
Designer	THE ARCHITIST .CO., TH
Finish	2022
Roomtype	Shophouse 3 Floors 4 Bedrooms



1 st Floor



2 nd Floor



3 rd Floor



# LIVING OR INVESTING

With our luxurious on-property hotel, you can invest in it or live in it, or enjoy the best of both worlds. Support your business trip with conference center, lounge by one of our pools with a cocktail in hand. Enjoy sport club and retreat to the Spa for a little peace and pampering. Sip & savour in style with a choice of bars and 5 star restaurants.





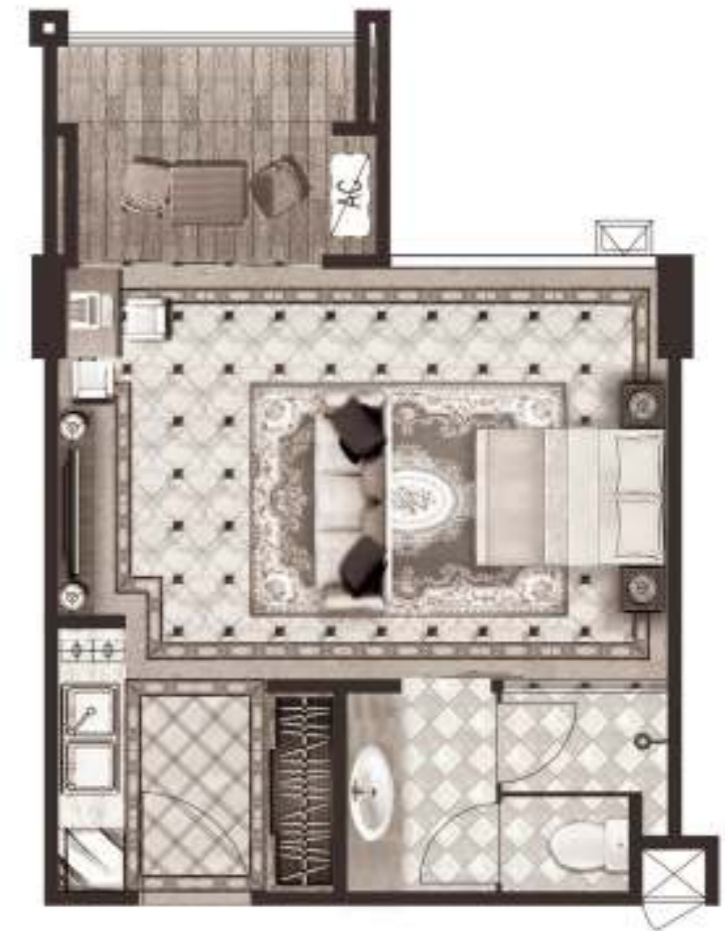


# VARIOUS LANDSCAPE

Modern design with an open floor plan. Choose from our 450 rooms, ranging in size from 27m<sup>2</sup> to 80m<sup>2</sup>. One room, two rooms, duplex with loft style, you want it we' ve got it. Relax with garden views, sea views or mountain views.



**TYPE B1**  
saleable area 27sp.m  
one bedroom



**TYPE A**  
saleable area 34.5sp.m  
one bedroom



### TYPE C

saleable area 42sp.m  
one bedroom



### TYPE F

saleable area 70sp.m  
two bedroom



# EXQUISITE CREATION

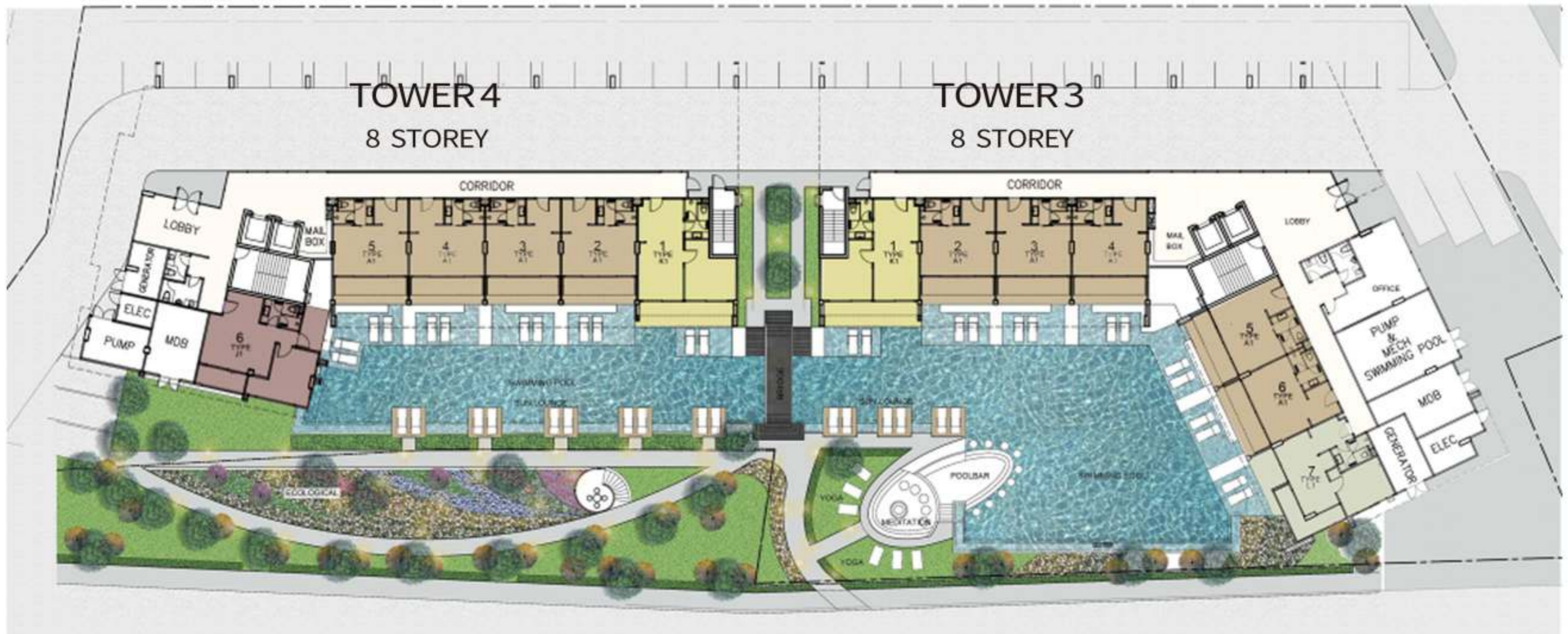
Sea Heaven Naithon Phuket Heaven Project is designed by an international design team.

All apartments have large terraces with sea view or mountain view. Enjoy breakfast while watching the sunrise or have a glass of wine in the evening while watching the sunset over the beach. Combine the multiple natural landscapes with modern lifestyle.

PROJECT DETAIL

Project Name Sea Heaven Naithon Phuket (PHASE 3.1)  
Developer Bestart Heaven Co.,Ltd.  
Location Naithon Beach, Sakhu, Thalang District, Phuket  
Detail RESIDENTIAL CONDOMINIUM LOWRISE  
STYLE LUXURY MODERN CONDOMINIUM FOR INVESTMENT

Land Area 3.92 Rai  
Building 2 Tower  
Floors 8 Floors  
Units 224 Units  
Parking 62 Cars  
Designer THE ARCHITIST .CO., TH  
Finish 2022  
Roomtype Studio, 1 Bed, 2 Bed, Duplex  
27 - 64 Sq.m..



## PHASE 3.1



## PHASE 3.2



**LUXURIOUS FULL DECORATION**  
Following the standards for five-star hotel, with full elegance decoration.

## VIP CUSTOMIZED SERVICE

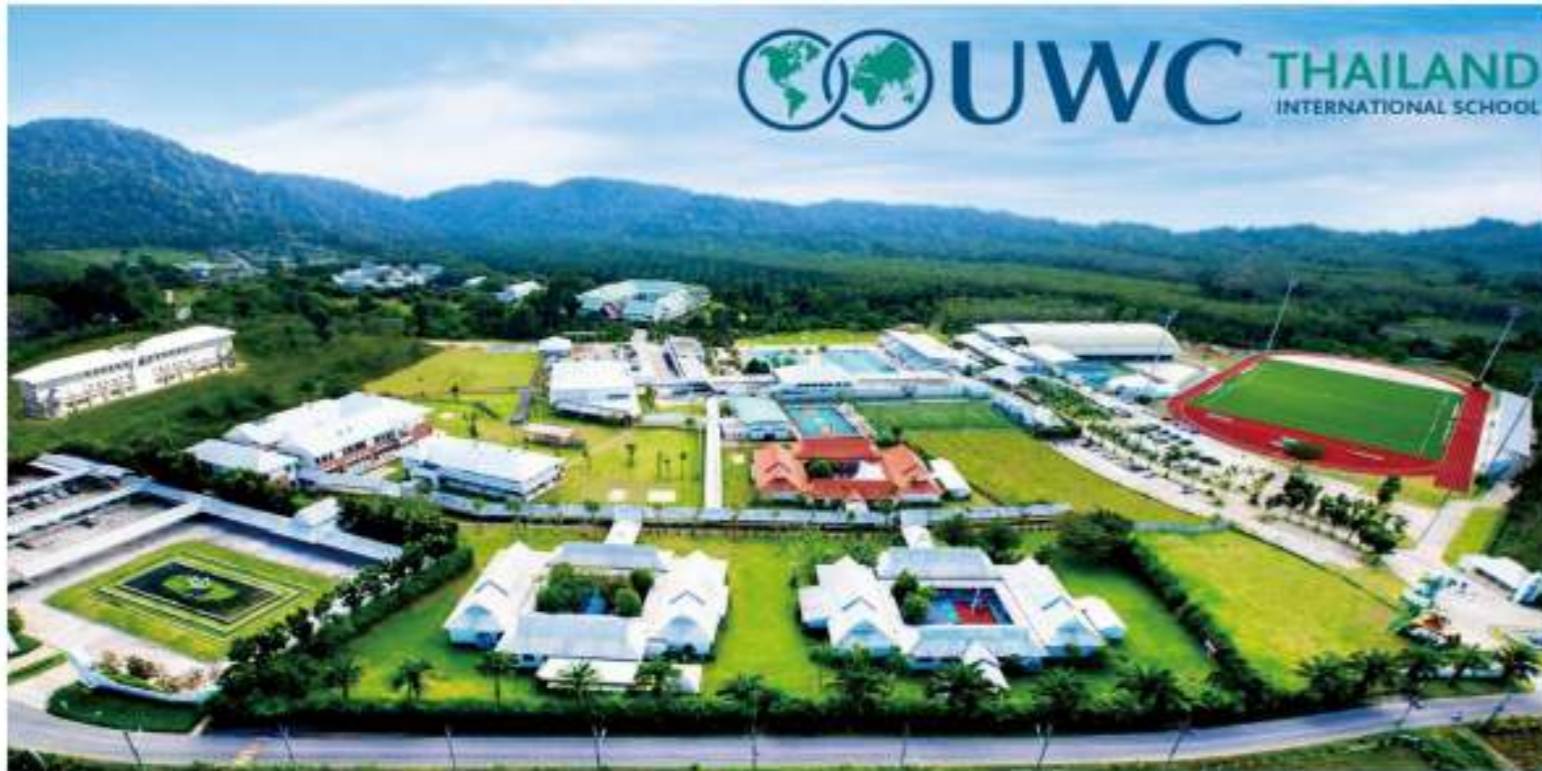
Our partners Wyndham Destinations is the world's largest vacation ownership and exchange company. Our property includes unique conveniences such as access to exclusive golf tours, planning wedding and birthday parties, medical treatment and coverage, access to international education and visa services.



Sea Heaven Project actively promotes Sea Heaven's VIP card program for owners. Now Sea Heaven has established a close partnership with high-end leisure and entertainment businesses such as golf courses and yacht clubs on Phuket Island and Project owners can enjoy VIP-related services for consumption.







UWC Thailand is located at the base of the Phuket National Park in the north of Phuket, next to Sea Heaven Project. In addition to the main education building and a lower level education building, the school also provides a variety of educational facilities on campus including two football fields, an indoor sports field, Two outdoor swimming pools (25m, 50m), an indoor tennis center, and student dormitories and living areas.

It selects and brings together young people from different backgrounds from all over the world to study, live, and contribute to enhancing international understanding and promoting human peace.

UWC Thailand is open for students from all over the world who are 18 months to 18 years old. The main course is IBDP (International Diploma Program). The UWC Thailand' s IB program is recognized by most of the world's leading universities. DP students are also welcomed by top universities. A number of European and American universities focus on the source base. Here, your next generation is seamlessly connected with world famous schools.



International education for the next generation  
To meet the needs of long-term residents around the world  
Sea heaven Project establishes educational partnership with UWC World Union College in Phuket,  
Thailand. Provide state of the art international education resources for homeowners' families.



**Advanced medical technology exclusive pension visa**  
Thailand has over the years become one of Asia's top medical tourism destinations. It has become a growing trend to travel to Thailand, particularly Bangkok, for medical treatment, due to its world-class hospitals, English-speaking hospital staff, excellent customer service, and low treatment cost. Thailand's best and largest hospital, Bangkok Hospital is a short drive from Sea Heaven Project.

Foreigners over 50 years old and with certain financial ability can apply for Thailand pension visa (retirement visa), allowing the holder to enter and leave Thailand without times limit. Sea Heaven Project can provide consultation services related to old-age pension for owners, and the project has established a strategic partnership with Phuket Branch of Bangkok Hospital.





## CONVENIENT TRANSPORTATION

Sea Heaven provides shuttle bus links to various holiday facilities on Phuket Island. 15 minutes complimentary shuttle ride from Sea Heaven to Phuket International Airport. Sea Heaven is located a few minutes away from the Phuket Light Rail Station under construction.



# FREEHOLD

INTERGENERATIONAL WEALTH TRANSFER



# CUSTOMIZED FINANCING

Sign a 10 year contract and get up to 10% back on your rent.  
we will find renters for your property when you are not there.



1. From years 1 to 5, the owners can look forward to a 7% return on investments and the owners can receive up to 10% in returns.
2. From years 6-10 enjoy shared profit. You as the owner receive 60%, the business receives 40%.
3. Complimentary 30 days stay every year.

# INVESTMENT PLAN FOR THE BETTER FUTURE

You can relax knowing you have a very safe investment.  
Recently property value has increased 6% every year in Phuket.  
The overall price is 15-20% lower than that of the products of the same quality in the surrounding area.

The project sales department provides flexible, convenient and diversified payment methods such as full payment and installment payment to fully meet the capital plan needs of the buyer.



MEMBER OF  
**WYNDHAM  
REWARDS**

**YOUR BEST THINKING HAPPENS WHEN THERE'S  
NOTHING ON YOUR MIND.**

At Wyndham Garden we've thought of almost everything. That way you can free to come up with your next big idea.



 **WYNDHAM  
GARDEN**

# COOPERATION OF INTERNATIONAL BANKS

Relax with the knowledge we have the cooperation of international banks. We are fully committed to supporting your investment.





# PROFESSIONAL DEVELOPER

Singapore-Thailand joint venture professional real estate enterprise,  
Benefit from our development team's extensive local knowledge with more than 20 years of  
real estate development and management practice,  
and has made and completed dozens of large-scale real estate projects.  
Dedicated operational support, proven marketing methods and  
powerful revenue management tools along with strategies tailored to  
your investment property dreams.



# GREAT POTENTIAL RETURN

Thailand is a very safe place to travel.  
The economy is expanding. Phuket will be built into the first smart city for  
the development of real estate. Sea Heaven Project allows you to live in convenience in the heart of Asia.





# SEA HEAVEN

Leave behind the stress and fast-pace of life in the big city and come to peace and beauty of beach front paradise living.

